



Collaboration, Innovation and Resilience: Championing a Digital Generation

Brisbane, Australia 6-10 April

Disaster Impact Information Services for the Australian Government

Dr John Dawson PSM – Branch Head, Community Safety
(Geoscience Australia)

Paul Gloyne - Assistant Coordinator General | Data and Analytics Branch
(National Emergency Management Agency)

Sybill McKeown - Program Manager - Community, Wellbeing and Aboriginal and Torres Strait Islander
Statistics Branch
(Australian Bureau of Statistics)



PLATINUM SPONSORS



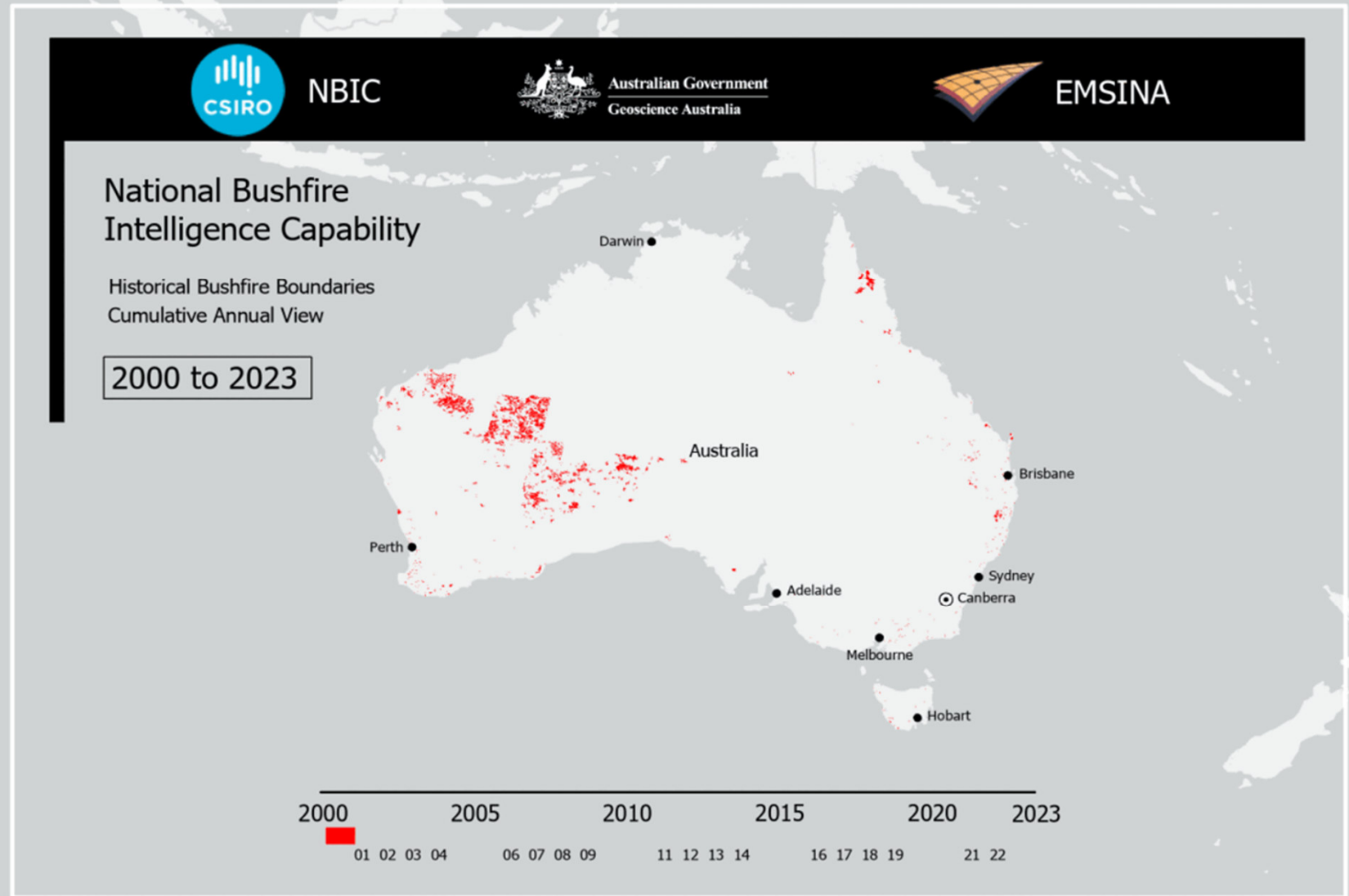
The most relevant SDGs related to the presentation and theme of this session



**SUSTAINABLE
DEVELOPMENT GOALS**

International Federation of Surveyors supports the
Sustainable Development Goals

Changing nature of hazards



Product Built by Geoscience Australia 2023

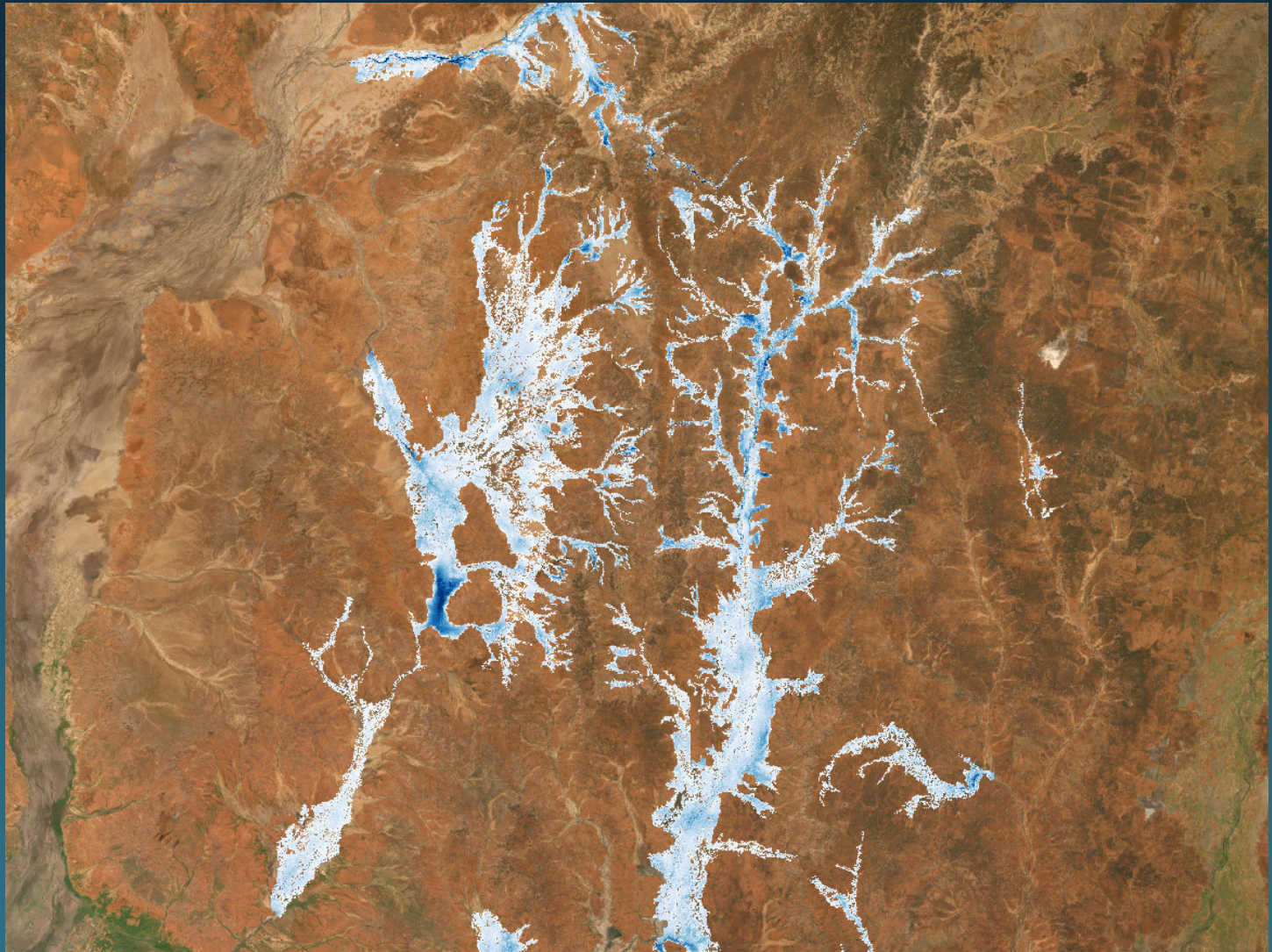
Northern Territory Government, Esri, Garmin, FAO, NOAA, USGS



© Commonwealth of Australia (Geoscience Australia) 2025

Earth sciences for Australia's future | ga.gov.au

Changing nature of hazards



Queensland Flooding, ICEYE

Disaster Impact Analysis Service (DIAS)

Hazards

- Near Real Time Bushfire (DAA)
- Flood insights (ICEYE)
- Flood Rapid Analysis (ICEYE)

Administrative Boundaries

- Local government areas
- Statistical areas
- Local government areas

Built Domain

- Residential Addresses
- Roads
- Aged care facilities
- Hospitals

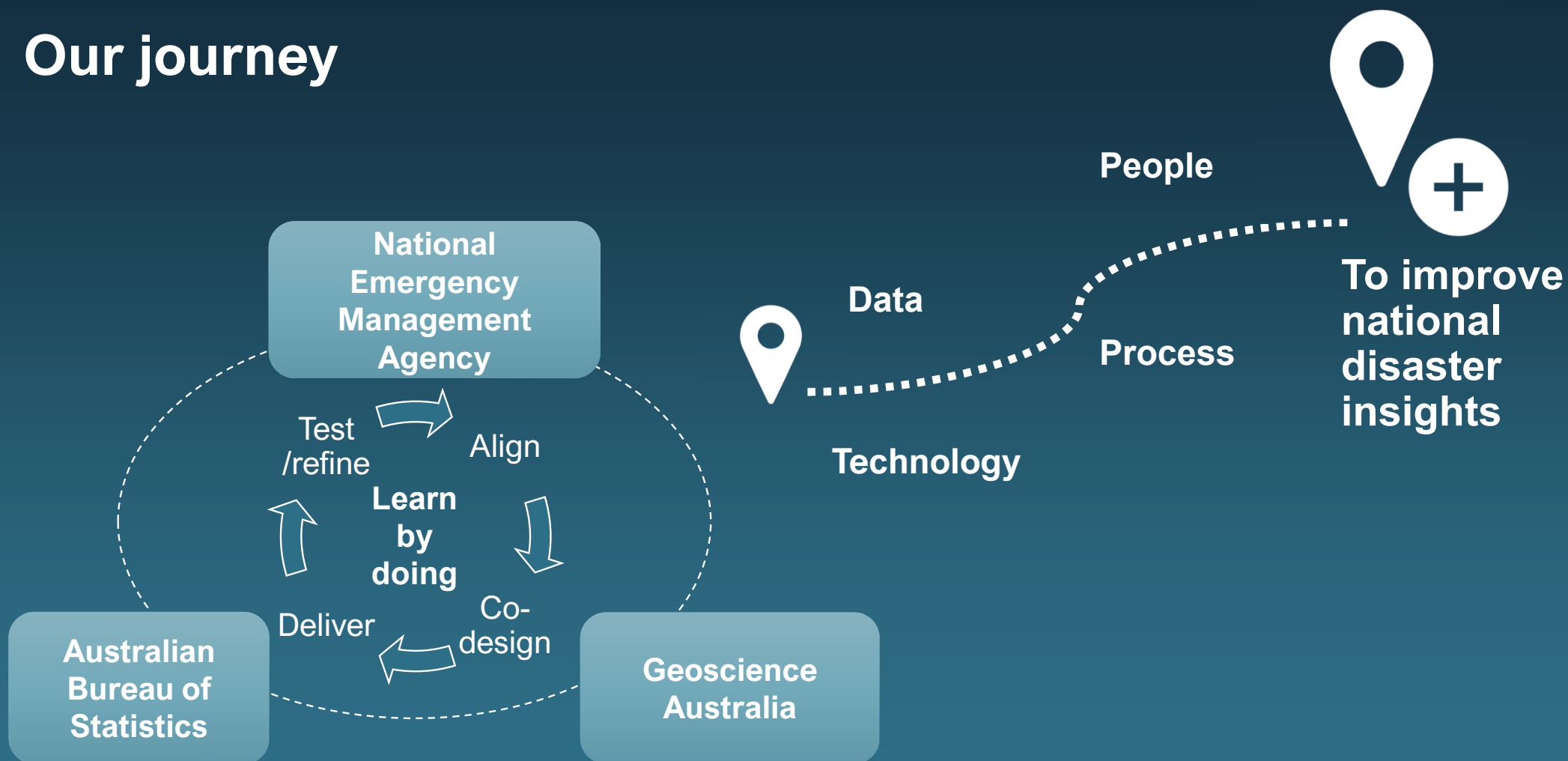
Social Domain

- Population (EMAPP)
- Selected ABS social and economic data

Economic Domain

- ABS Business Longitudinal Analysis Data Environment

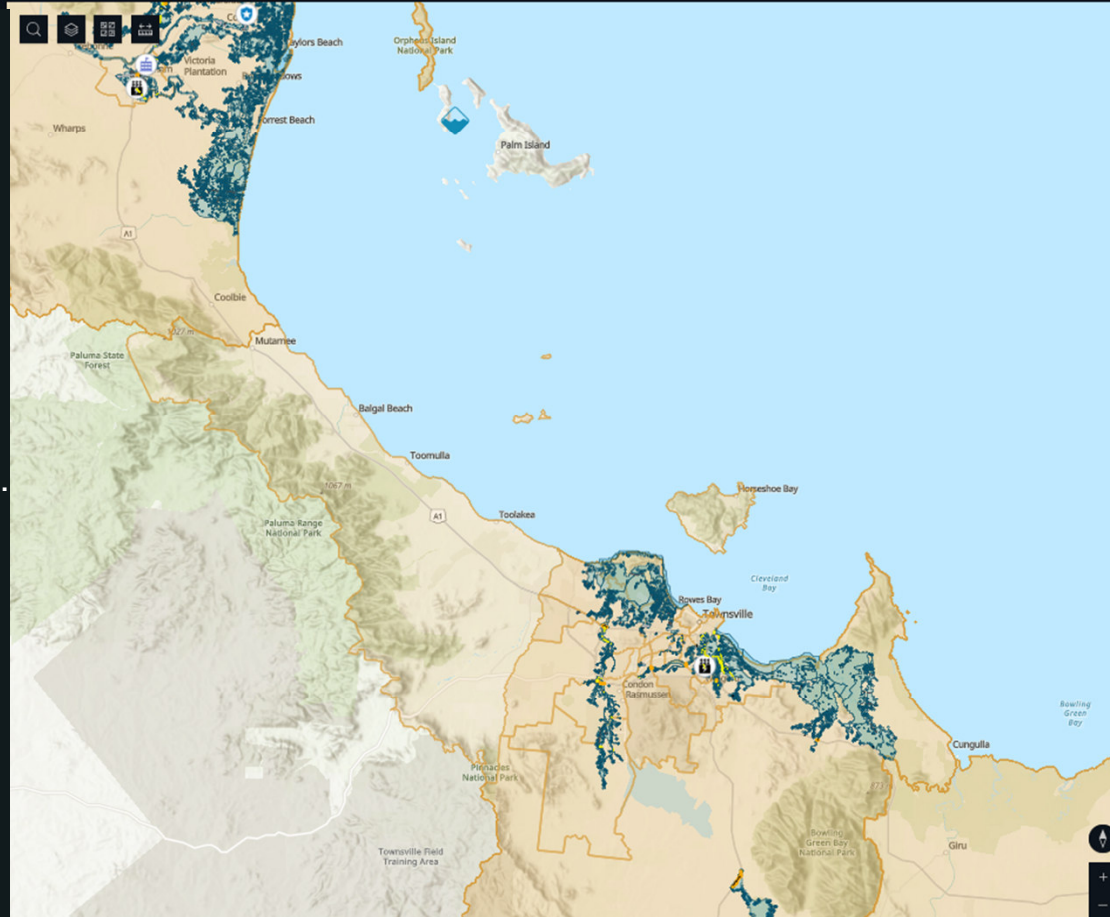
Our journey



North Queensland Flood Feb 25

Provides

- Automated hazard insights across domains.
- Assured/authoritative data from relevant custodians.
- Accessible interface for non-GIS users.
- Auditable analysis/results.
- Ongoing dynamic data pipeline.
- Analysis designed for the Australian scale.
- Data governance mechanisms.



Community Effected

(SA2)

Buildings

Residential	Commercial	Industry
929	1,270	1,335
Hospitals	Aged Care	Schools
215	0	1
Fire Stations	Ambulance Stations	Police Stations
0	0	1

Transport

Major Roads (km)	Railway Stations	
11	202	
Connectors (km)	Railway Lines	
12	858 km	
Local Roads (km)	Airports	Seaports
120	0	0

Power

Lines (km)	Major Stations	Substations
83,510	0	2

Improving over time

Disaster insights

Now

Response
Exposure insights

Next

Recovery
Impact insights

Later

Resilience
Mitigation insights

< LGA

SA2 >

Region profile

Events

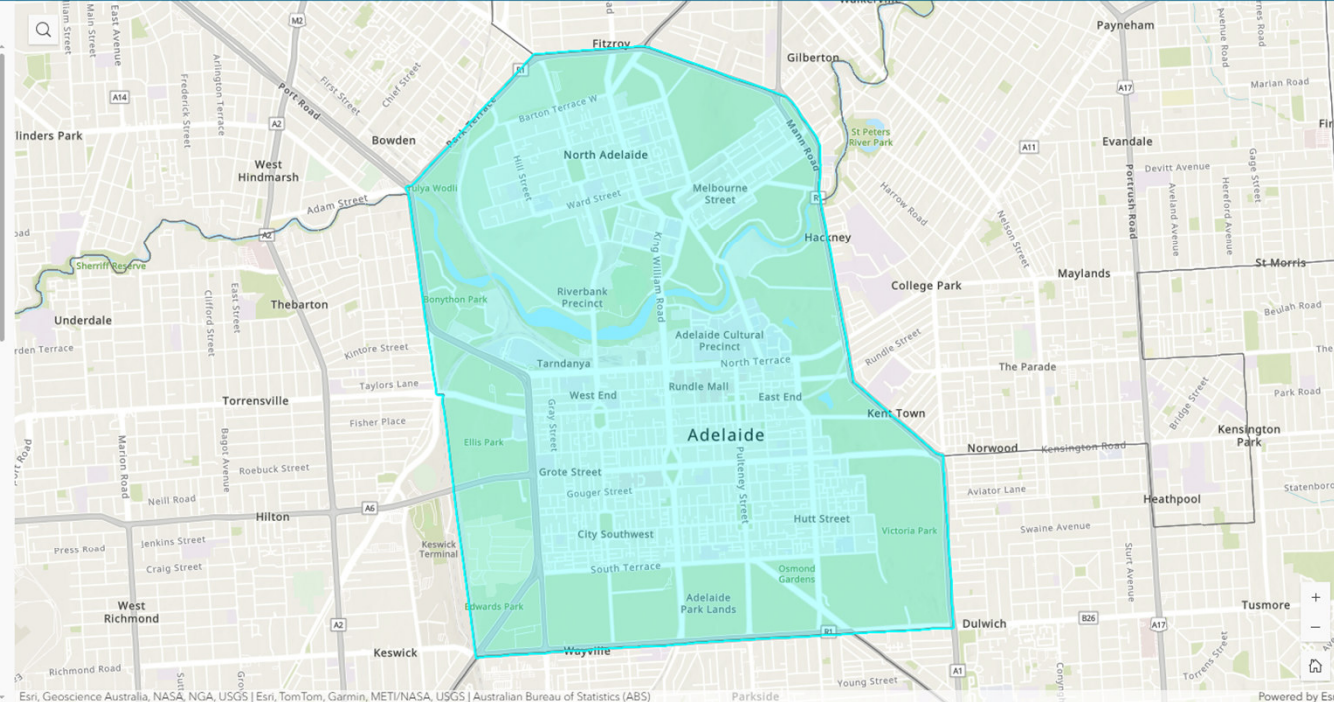
Hazards

Regions

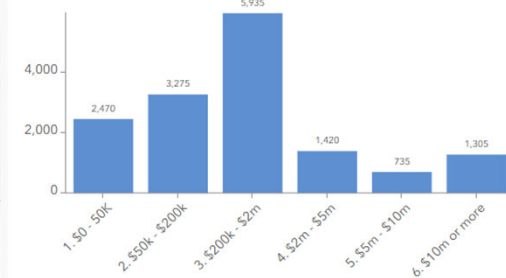
Search Name

Alphabetical

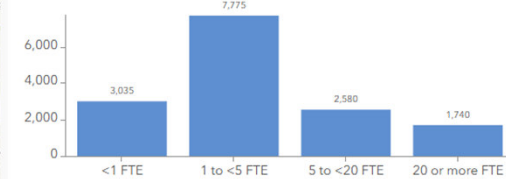
Adelaide
Adelaide Hills
Adelaide Plains
Albany
Albury
Alexandrina
Alice Springs
Alpine
Anangu Pitjantjatjara Yunkunytjatjara
Ararat
Armadaile
Armidale Regional
Ashburton
Augusta Margaret River
Aurukun
Ballarat
Ballina



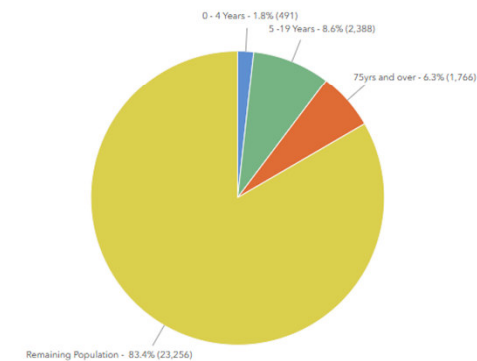
Businesses by Annual Turnover (No.)



Business FTE (full-time equivalent)



Population Distribution (age)



Adelaide has a population of **27,901**. It is in the **Below average disadvantage** socio-economic quintile. It is ranked **371** out of 566 LGAs (where 1 is the most disadvantaged LGA, and 566 is the least).

Population demographics

491 children younger than 4 years old, **1.9%** of the population, which is **Low** compared to other LGAs.

2388 children between 5-19 years old, **9%** of the population.

23,256 people between 20-74 years old.

1,766 people aged 75 years or over, **6.8%** of the population.

450 Aboriginal and Torres Strait Islander Peoples, **1.8%** of the population.

Vulnerable population

1,444 people with three or more chronic health conditions, **2%** of the population.

3,339 people with a disability, **13.8%** of the population.

850 people with a profound or severe limitation, **3.4000000%** of the population.

1,008 people who are not proficient in English, **4.0%** of the population.

1,696 people with asthma and/or a lung condition, **6.8%** of the population.

159.0 homeless persons per 10,000 persons.

Households demographics

11116 total households.

1,717 low-income households, representing **16.1%** of total households with stated income.

6,618 rented occupied private dwellings, representing **59.5%** of total households.

769 social housing, representing **6.9%** of total households.

3,421 households without a motor vehicle, representing **30.8%** of total households.

About the data

DIAS Benefits



Increased efficiencies



Reliable data



National Consistency



Integrated Geospatial infrastructure

A way of collaborating for outcomes

