



Locate25 
THE NATIONAL GEOSPATIAL CONFERENCE



Geospatial
Council of Australia

Collaboration, Innovation and Resilience: Championing a Digital Generation

Brisbane, Australia 6–10 April

GIS and the SDG's

Private Sector's Role in the SDG's....

Brent Jones, PE, PLS

Esri



PLATINUM SPONSORS



CHCN AV

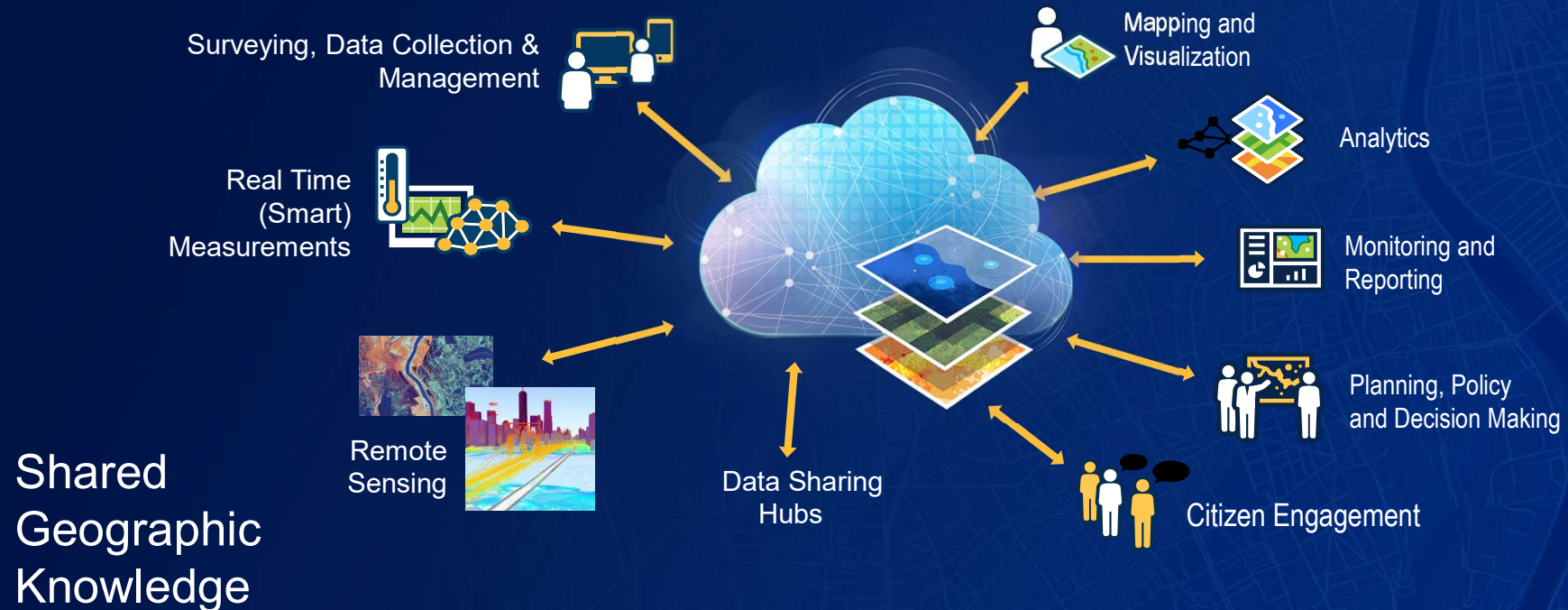


Esri's Role

Democratize access to "timely, high-quality, and disaggregated data to drive targeted responses, help anticipate future needs, and shape needed actions" with geospatial context.

What is a GIS?

An Infrastructure for Managing, Sharing, and Applying Geographic Information



GIS

**Provides a
Framework
and Process**



*Leveraging the Power of Computing & Location . . .
. . . To Make Better Decisions*

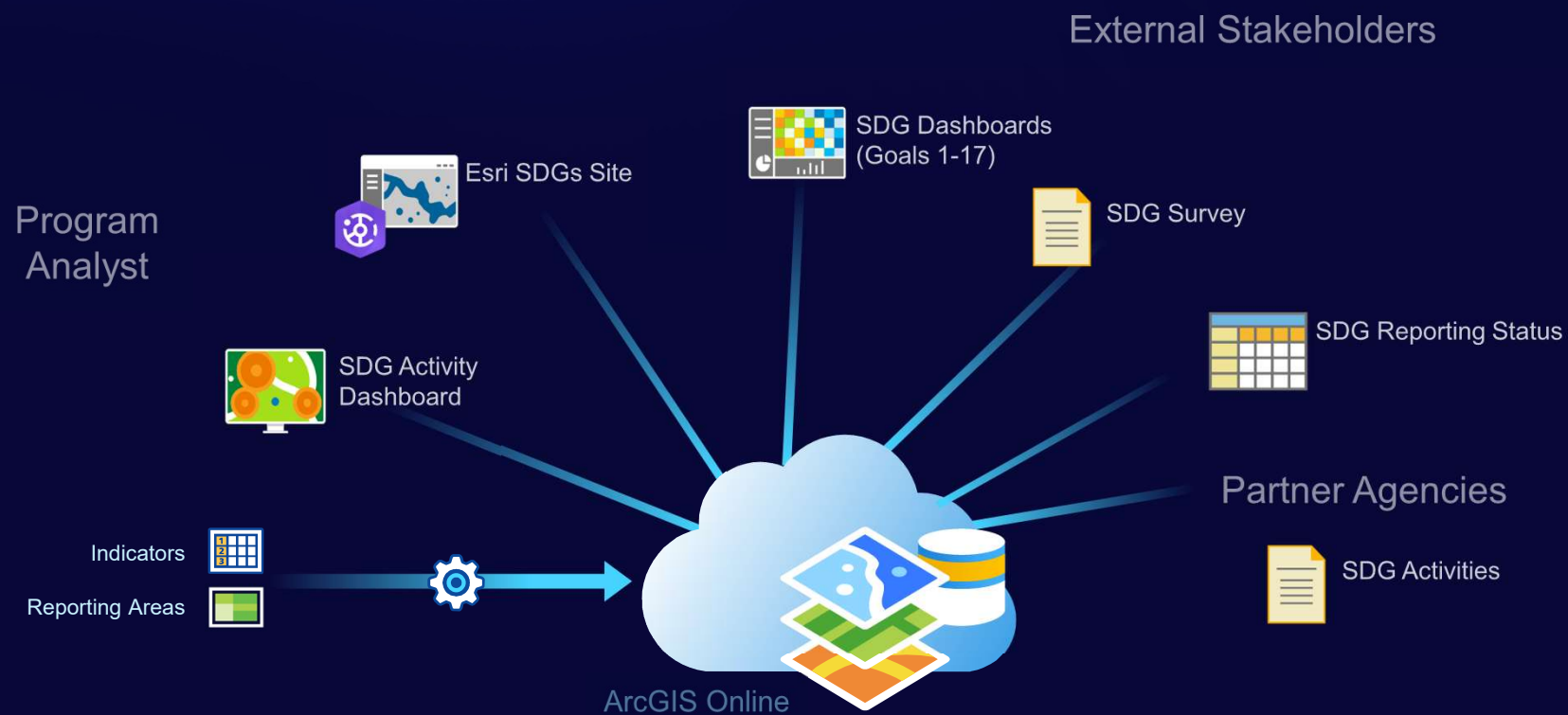
GIS Technology Is Advancing Rapidly

Integrating and Leveraging Many Innovations



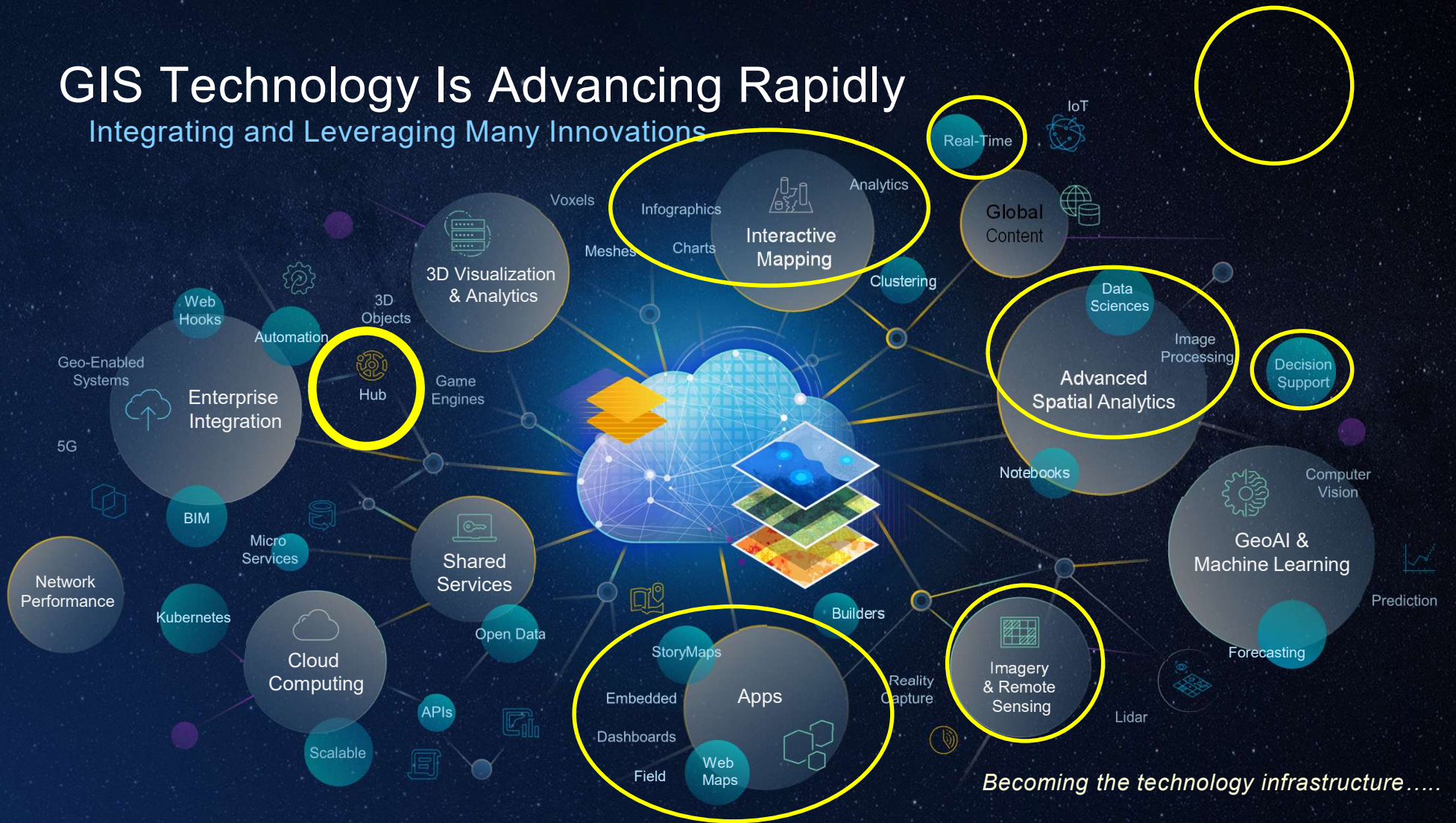
Sustainable Development Goals

Focused Maps and Apps



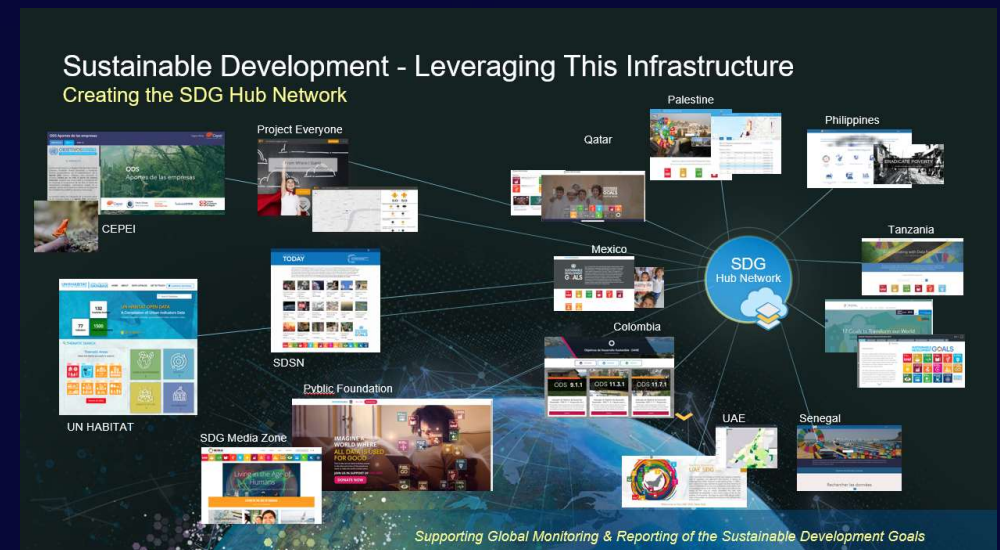
GIS Technology Is Advancing Rapidly

Integrating and Leveraging Many Innovations



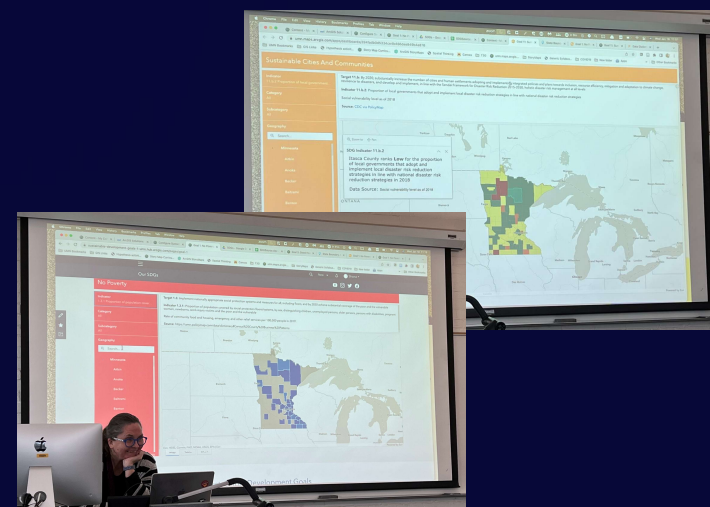
Easy Deployable Solution

- GIS Solution configured for SDGs launched on 15 Nov 2022
- Builds off earlier collaboration with UN and members states on the “Federated Information System for the SDGs” (FIS4SDGs) Guided by the SDG Data Alliance
- Supports:
 - Global Development Agencies
 - Governments
 - International Organizations
 - Nonprofits and NGOs
 - Academia
 - Private Sector



SDG Data Hubs Deployed & In-Process

- SDG Data Alliance Countries
 - Cameroon, South Africa, Mozambique, Senegal, Rwanda, Ghana, Philippines, Mongolia, Nepal, Indonesia, India, St. Lucia, Mexico, Brazil, Honduras, Guatemala, Chile, Morocco, Moldova, Fiji and Haiti
- UN and Global Development
 - UN Open SDG Data Hub
- Communities & Cities
 - Aguascalientes, MX
 - New Orleans, LA
 - Battle Creek, MI
 - Miami, FL
- State/Provincial & Local Governments
 - Michigan, Minnesota, Arizona, Washington, Guam, Micronesia, Florida, Hawaii



SDG Resources



No Poverty

End poverty in all its forms everywhere.



Zero Hunger

End hunger, achieve food security and improved nutrition, and promote sustainable agriculture.



Good Health and Well-Being

Ensure healthy lives and promote well-being for all, at all ages.



Quality Education

Ensure inclusive and equitable quality education and promote lifelong learning opportunities for all.



Gender Equality

Achieve gender equality and empower all women and girls.



Clean Water and Sanitation

Ensure availability and sustainable management of water and sanitation for all.



Affordable and Clean Energy

Ensure access to affordable, reliable, sustainable, and modern energy for all.



Decent Work and Economic Growth

Promote sustained, inclusive, and sustainable economic growth; full and productive employment; and decent work for all.

SDG Hub Implementations



Kingdom of Saudi Arabia

Capital: Riyadh
Population: 35.9M



Burkina Faso

Capital: Ouagadougou
Population: 22.5M



Haiti

Capital: Port-au-Prince
Population: 11.6M



Ireland

Capital: Dublin
Population: 5.2M



Philippines

Capital: Manila
Population: 116.4M



Mexico

Capital: Mexico City
Population: 129.9M



State of Palestine

Proclaimed Capital: Jerusalem,
Ramallah
Population: 5.2M



United Arab Emirates

Capital: Abu Dhabi
Population: 10.0M



Guam

Capital: Hagåtña
Population: 169.3K



Hawaii

Capital: Honolulu
Population: 1.4M

SDG Data Alliance

Despite significant advances in **data collection and geospatial technology** across the world, many developing countries still **lack the resources, tools and technology to track progress** toward the **sustainable development goals (SDGs)**.

These gaps make it challenging for countries to achieve the SDGs and make informed development decisions that lead to **better policies and investments**. Many **developing nations are at risk of being left out of the geospatial data revolution**.



SDG Data Alliance

- www.sdg.org
- 19 Partner Countries; SIDS
- Partners:
 - Local2030 Islands Network – SIDS, subnational government, cultural context
 - Univ of Minnesota – local governments
 - SDSN – capacity building Learn lessons, VNR StoryMap template
- Founding Partners:
 - United Nations
 - Department of Economic and Social Affairs (Sustainable Development Branch, Statistical Division – GGIM Secretariat)
 - WK Kellogg Foundation
 - Pvblic Foundation
 - Esri





AND

Locate25 | **G**
THE NATIONAL GEOSPATIAL CONFERENCE

Collaboration, Innovation and Resilience:
Championing a Digital Generation



Brisbane, Australia 6–10 April

[SDG.org](https://sdg.org)



**SDG
DATA
ALLIANCE**

[Home](#)

[About Us](#)

[Data Hubs](#)

[Stories](#)

[Learning](#)

[SDG Data Alliance x SIDS](#)



USING DATA AND
GIS TECHNOLOGY TO
ACCELERATE THE
ACHIEVEMENT OF THE
SUSTAINABLE
DEVELOPMENT GOALS



ORGANISED BY



PLATINUM SPONSORS



The SDG DATA ALLIANCE
began country-level
engagement with an
initial group of countries.
There are a total of 30
candidate countries

- *Geospatial Agency*
- *Statistics Agency*
- *Economic and Planning Agency*
- *Dept of Information and Communication Technology*
- *Dept of Environment and Sustainable Development*
- *Urban Planning and Management*
- *Agriculture and Livestock*
- *Water and Sanitation*
- *Education Agency*
- *Health Agency*
- *Infrastructure Agency*
- *Energy Agency*
- *Govt. Partner Universities*

Candidate Countries

Africa

Burkina Faso*
Cameroon*
Comoros
Congo DRC
Eswatini*
Ethiopia*
Kenya
Madagascar
Morocco*
Mozambique*
Niger
Rwanda*
Senegal*
South Africa*

Asia and The Pacific

Fiji*
Indonesia
Nepal
Philippines
Tonga*

Latin America and The Caribbean

Chile*
Colombia
Dominican Republic*
Ecuador
El Salvador
Guatemala*
Haiti*
Honduras*
Panama*
Saint Lucia

*Currently working with Alliance

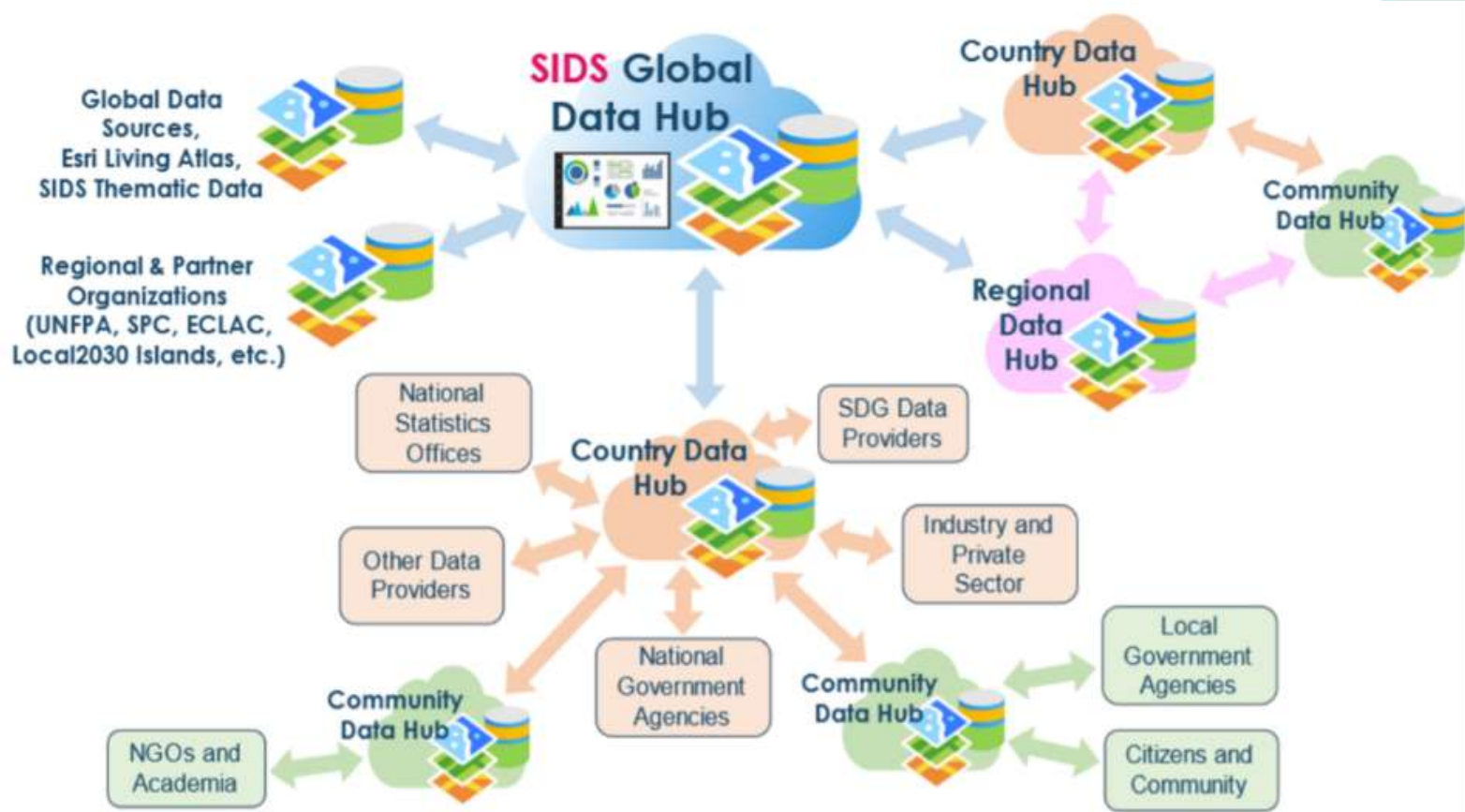
Expansion to Small Island States

At the **Fourth International Conference on SIDS (SIDS4)** in Antigua and Barbuda in May 2024, the international community will determine the next **10-year SIDS Program of Action** to supercharge their path to resilient prosperity.

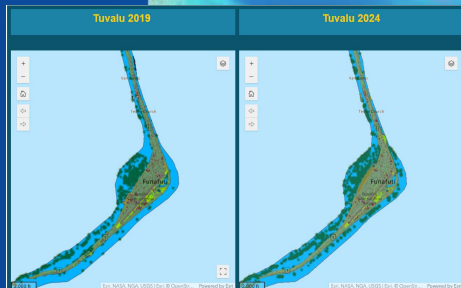
At the UN General Assembly in September 2023, PVBLIC signed a collaboration agreement with **the Alliance of Small Island States (AOSIS) and Antigua & Barbuda** to establish a Global Data Hub for SIDS.

To be launched at SIDS4, the **SIDS Global Data Hub** will establish a sustainable and enduring repository for **comprehensive data on SIDS**, help national governments share data, monitor public investments, track progress toward the SDGs, and **engage stakeholders**.

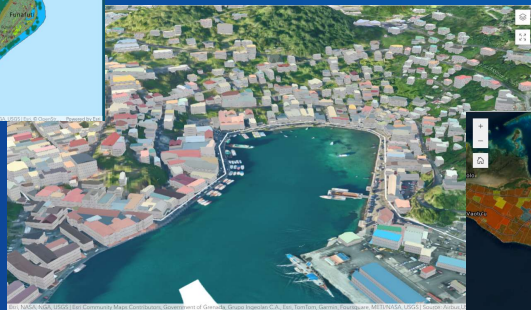




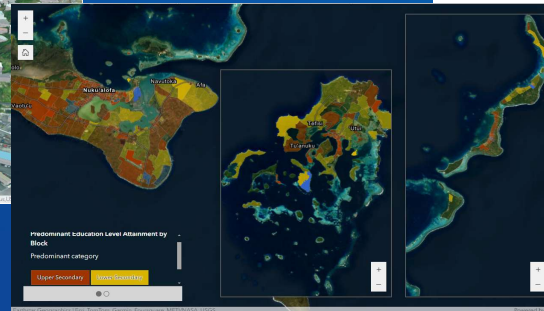
Accelerating Development with Small Island States



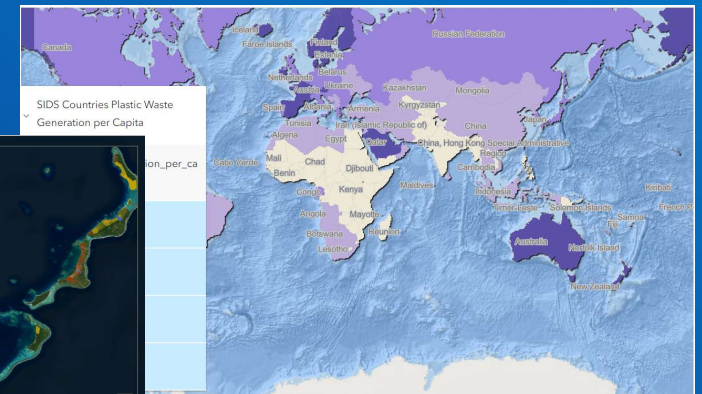
Tuvalu Sea-Level Rise



Grenada - St. George's
Predictive Modeling of
Floods



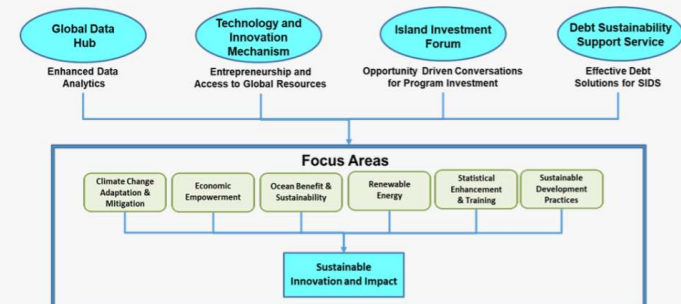
Tonga – Nuku'alofa
Education Level
Attainment



Plastic Waste Generation
by Country

SIDS Center of Excellence

A number of **Focus Areas** will initially be targeted to ensure the Center is able to deliver Sustainable Innovation and Impact for all SIDS.



The ambition is for the SIDS Center of Excellence to serve as a center for innovation, knowledge sharing and training for all SIDS.

SIDS GLOBAL DATA HUB

Charting the Course Toward Resilient Prosperity

Communities:



Contributions by:



Pacific Community
Communauté du Pacifique



PLACE



Esri's SDG Approach – Partnership Driven

- Multistakeholder Partnerships
 - SDG Data Alliance
 - Academic Partners - SDSN, University of Minnesota, Other Esri University Partners
- Nonprofit Organizations and NGOs
 - Sustainable Development Solutions Network (SDSN)
 - Local2030 Islands Network
- Development Agencies
 - United Nations
 - Development Banks
- Private Sector

SDG GIS Resources



GIS Resources



Data Alliance



SDG Data Hubs



SDs Data Hub



AND

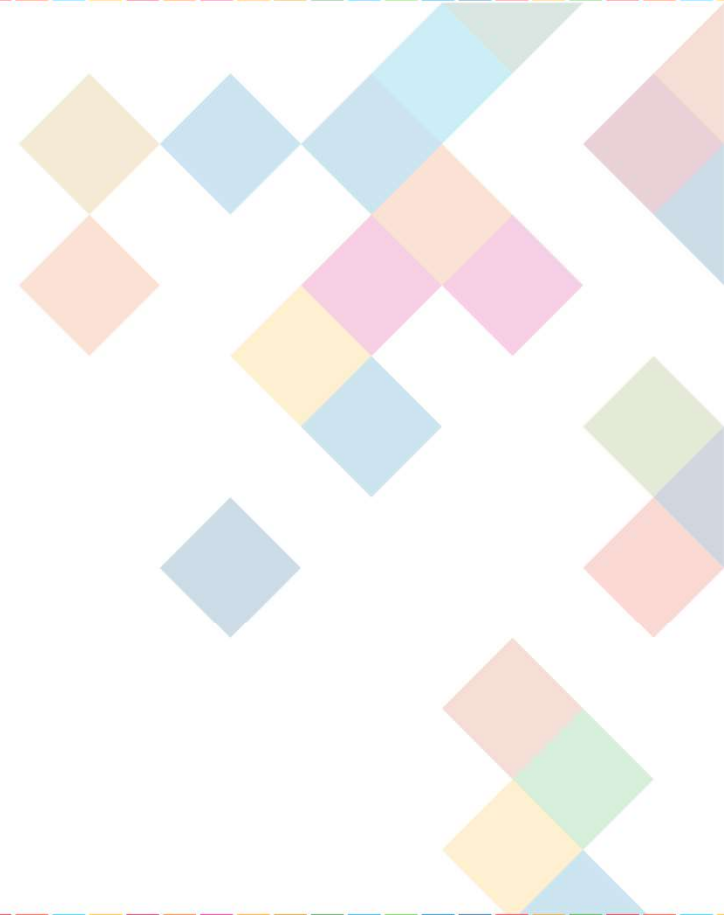
Locate25

THE NATIONAL GEOSPATIAL CONFERENCE

Collaboration, Innovation and Resilience:
Championing a Digital Generation



Brisbane, Australia 6–10 April



ORGANISED BY



PLATINUM SPONSORS





AND

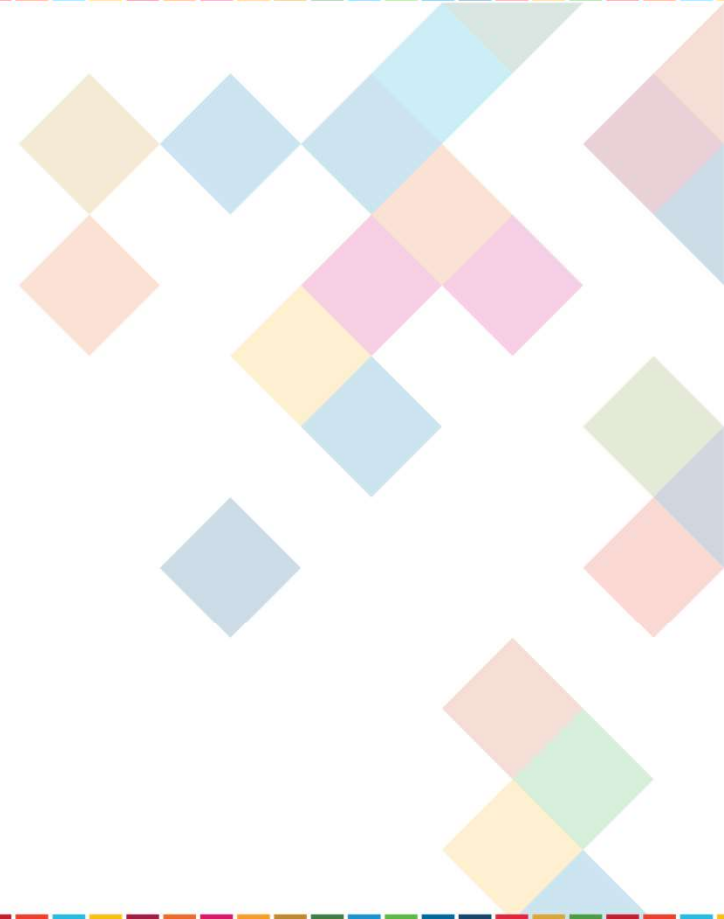
Locate25

THE NATIONAL GEOSPATIAL CONFERENCE

Collaboration, Innovation and Resilience:
Championing a Digital Generation



Brisbane, Australia 6–10 April



ORGANISED BY



PLATINUM SPONSORS





AND

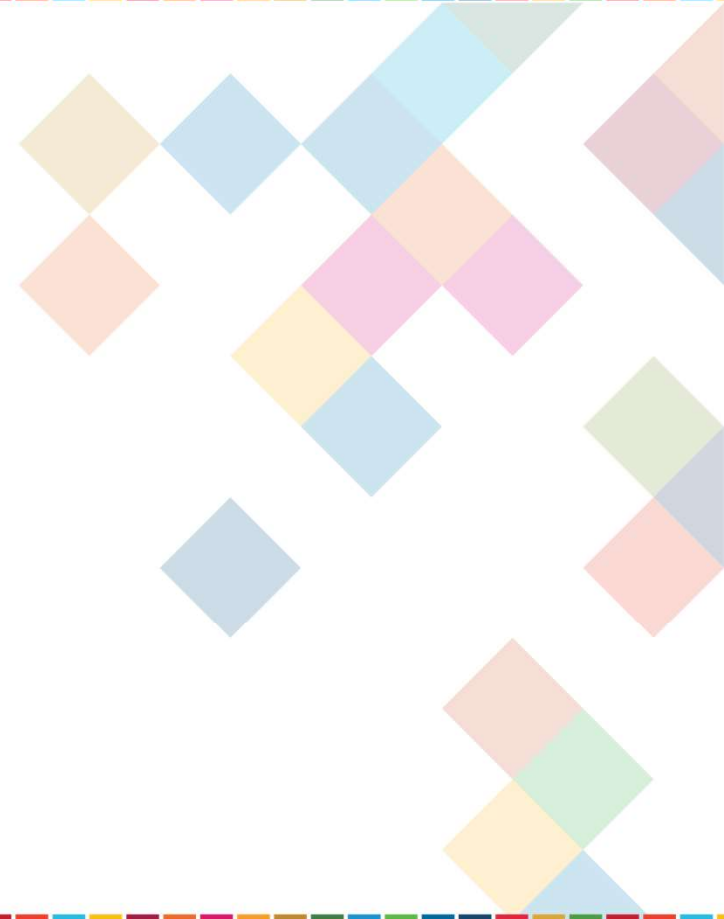
Locate25

THE NATIONAL GEOSPATIAL CONFERENCE

Collaboration, Innovation and Resilience:
Championing a Digital Generation



Brisbane, Australia 6–10 April



ORGANISED BY



PLATINUM SPONSORS





AND

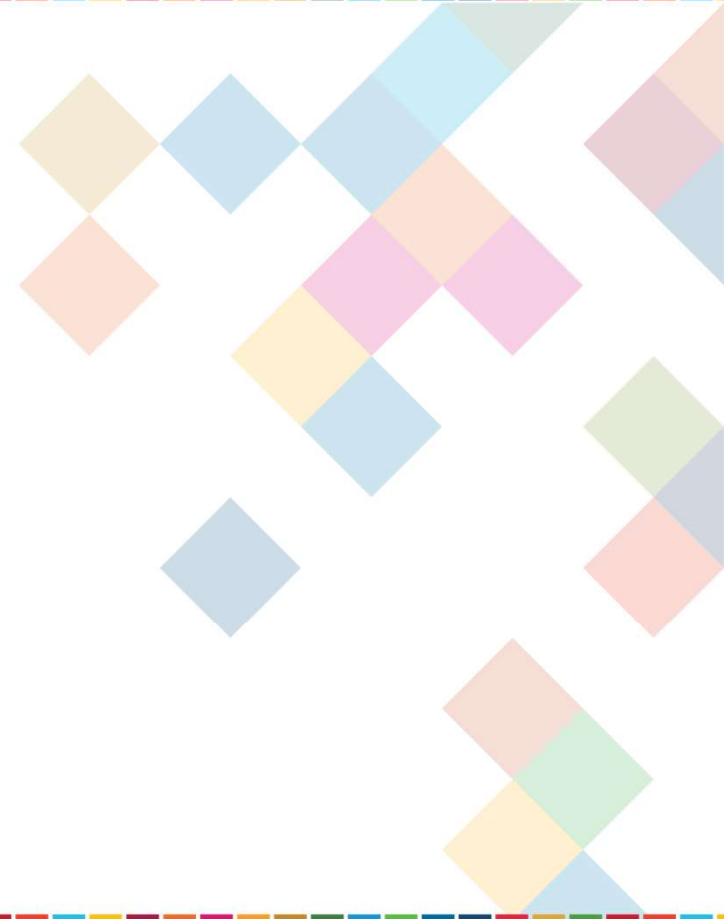
Locate25

THE NATIONAL GEOSPATIAL CONFERENCE

Collaboration, Innovation and Resilience:
Championing a Digital Generation



Brisbane, Australia 6–10 April



ORGANISED BY



PLATINUM SPONSORS

