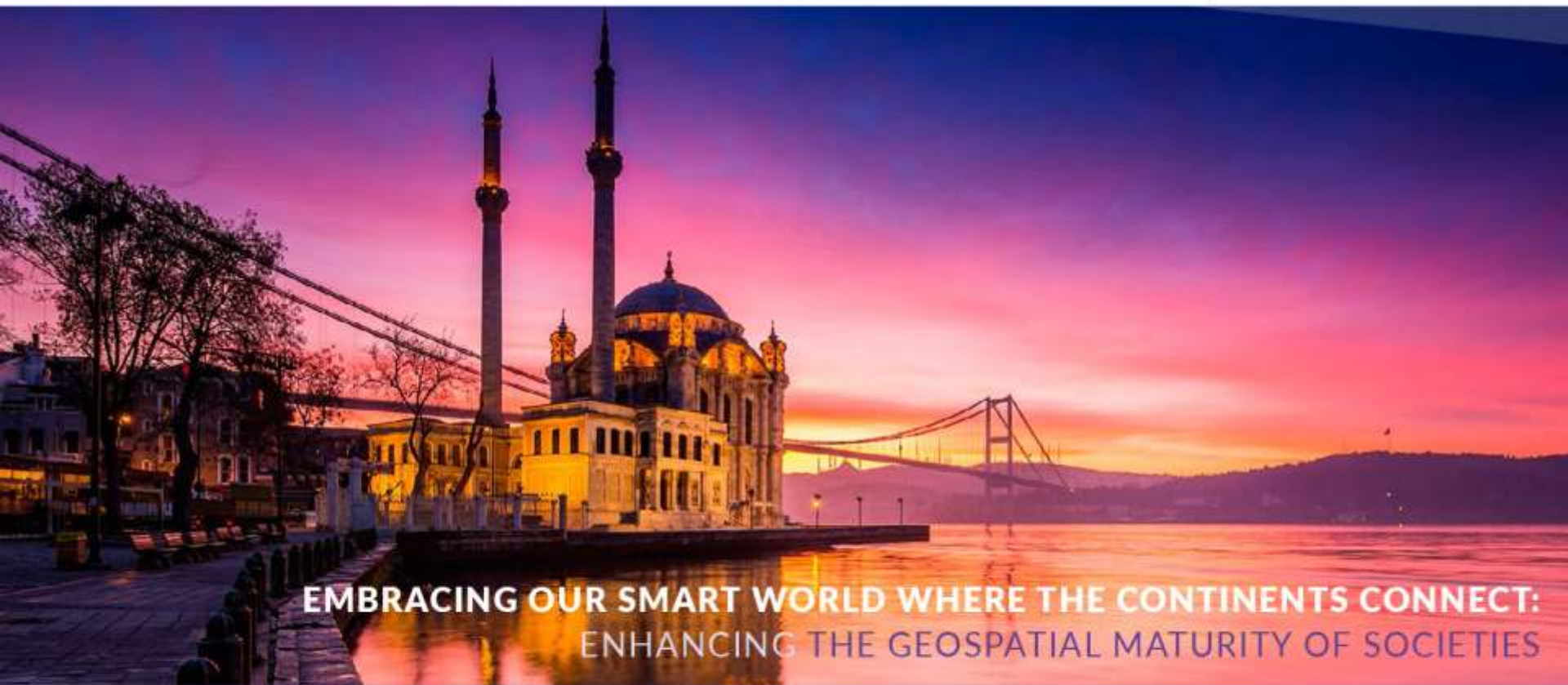




XXVI FIG Congress 2018

6-11 May 2018

ISTANBUL



**EMBRACING OUR SMART WORLD WHERE THE CONTINENTS CONNECT:
ENHANCING THE GEOSPATIAL MATURITY OF SOCIETIES**

ORGANISED BY



MAIN SUPPORTERS



PLATINUM SPONSORS





XXVI FIG Congress 2018

6-11 May 2018 ISTANBUL

EMBRACING OUR SMART WORLD WHERE THE CONTINENTS CONNECT:

ENHANCING THE GEOSPATIAL MATURITY OF SOCIETIES

FINANCIAL REPORT

-

FIG Congress 2018 Istanbul, Turkey

ORGANISED BY



MAIN SUPPORTERS



PLATINUM SPONSORS



This presentation

- Report from the FIG-Office
- Overall financial situation in 2017
 - Adopt audited accounts (17 A)
- Member Association subscriptions 2020
- Budgets for 2018-21 (17 C)



XXVI FIG Congress 2018

6-11 May 2018 ISTANBUL

EMBRACING OUR SMART WORLD WHERE THE CONTINENTS CONNECT:

ENHANCING THE GEOSPATIAL MATURITY OF SOCIETIES

FIG Office



Claudia
Conference
and Support
Manager



Maria
Finance and
Administration



Martine
Assisting Conf.
and Support
Manager



Louise
Director

ORGANISED BY



MAIN SUPPORTERS



PLATINUM SPONSORS





XXVI FIG Congress 2018

6-11 May 2018 ISTANBUL

EMBRACING OUR SMART WORLD WHERE THE CONTINENTS CONNECT:

ENHANCING THE GEOSPATIAL MATURITY OF SOCIETIES

Office tasks

- **Membership matters - Communication**
- **Development (IT) - Council support**
- **Support to commissions and others**
- **Finances**
- **UN-cooperation**
- **Conference organisation**
- etc



- Technical programme with commissions/volunteers
- Practical organisation with Local Organisers
- Visa issues...

ORGANISED BY



MAIN SUPPORTERS



PLATINUM SPONSORS



FIG
2018
ISTANBUL

XXVI FIG Congress 2018

6-11 May 2018 ISTANBUL

EMBRACING OUR SMART WORLD WHERE THE CONTINENTS CONNECT:

ENHANCING THE GEOSPATIAL MATURITY OF SOCIETIES

IT Development 2017

- **Membership database**
- **Improvement of abstract and peer review databases**
- **Conference web app improvements**
- **New mass mailing system**
- **Ongoing process...**

ORGANISED BY



MAIN SUPPORTERS



PLATINUM SPONSORS





XXVI FIG Congress 2018

6-11 May 2018 ISTANBUL

EMBRACING OUR SMART WORLD WHERE THE CONTINENTS CONNECT:

ENHANCING THE GEOSPATIAL MATURITY OF SOCIETIES

Overall situation and trends

ORGANISED BY



MAIN SUPPORTERS



PLATINUM SPONSORS





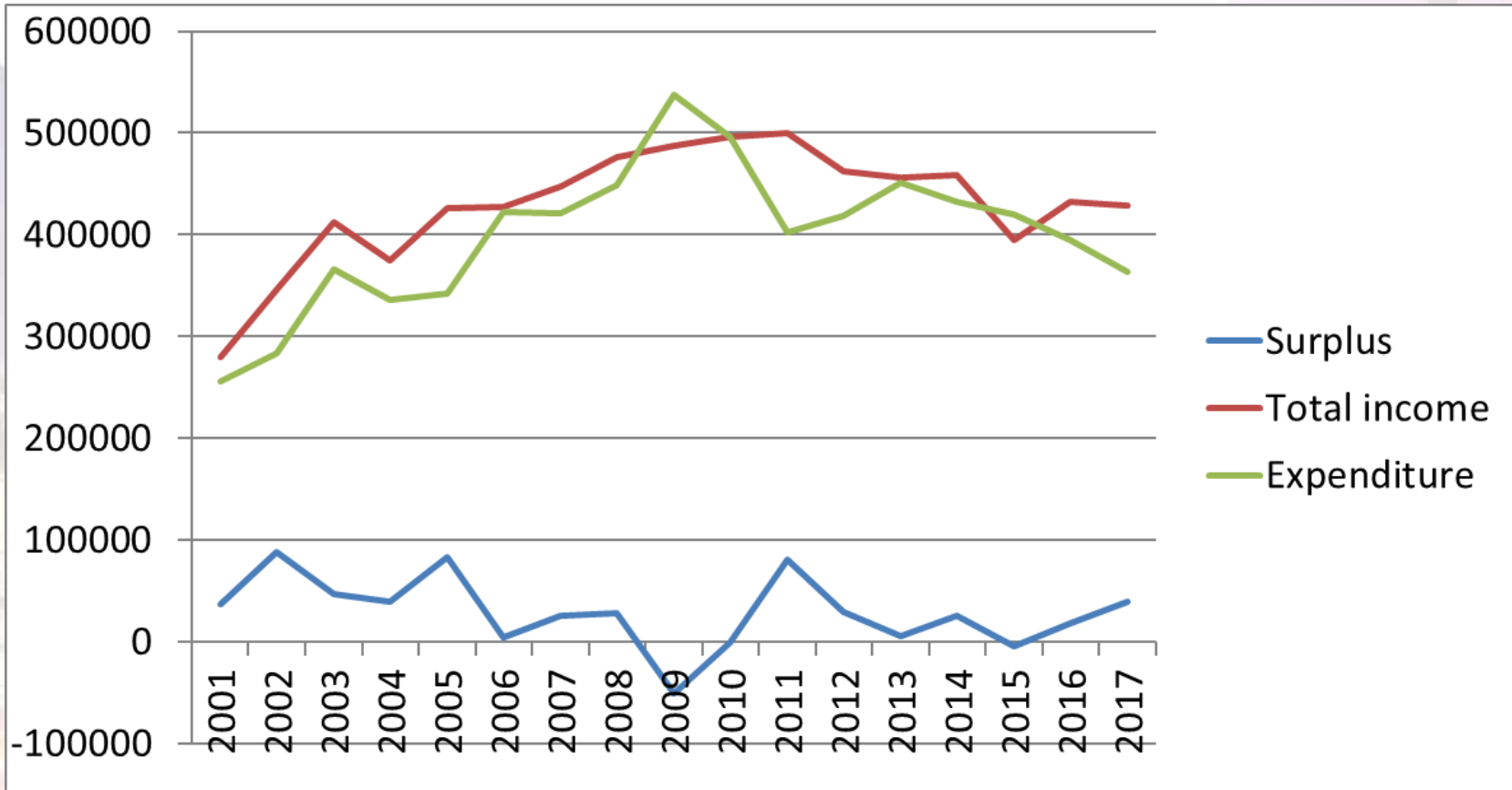
XXVI FIG Congress 2018

6-11 May 2018 ISTANBUL

EMBRACING OUR SMART WORLD WHERE THE CONTINENTS CONNECT:

ENHANCING THE GEOSPATIAL MATURITY OF SOCIETIES

FIG Financial overview



ORGANISED BY



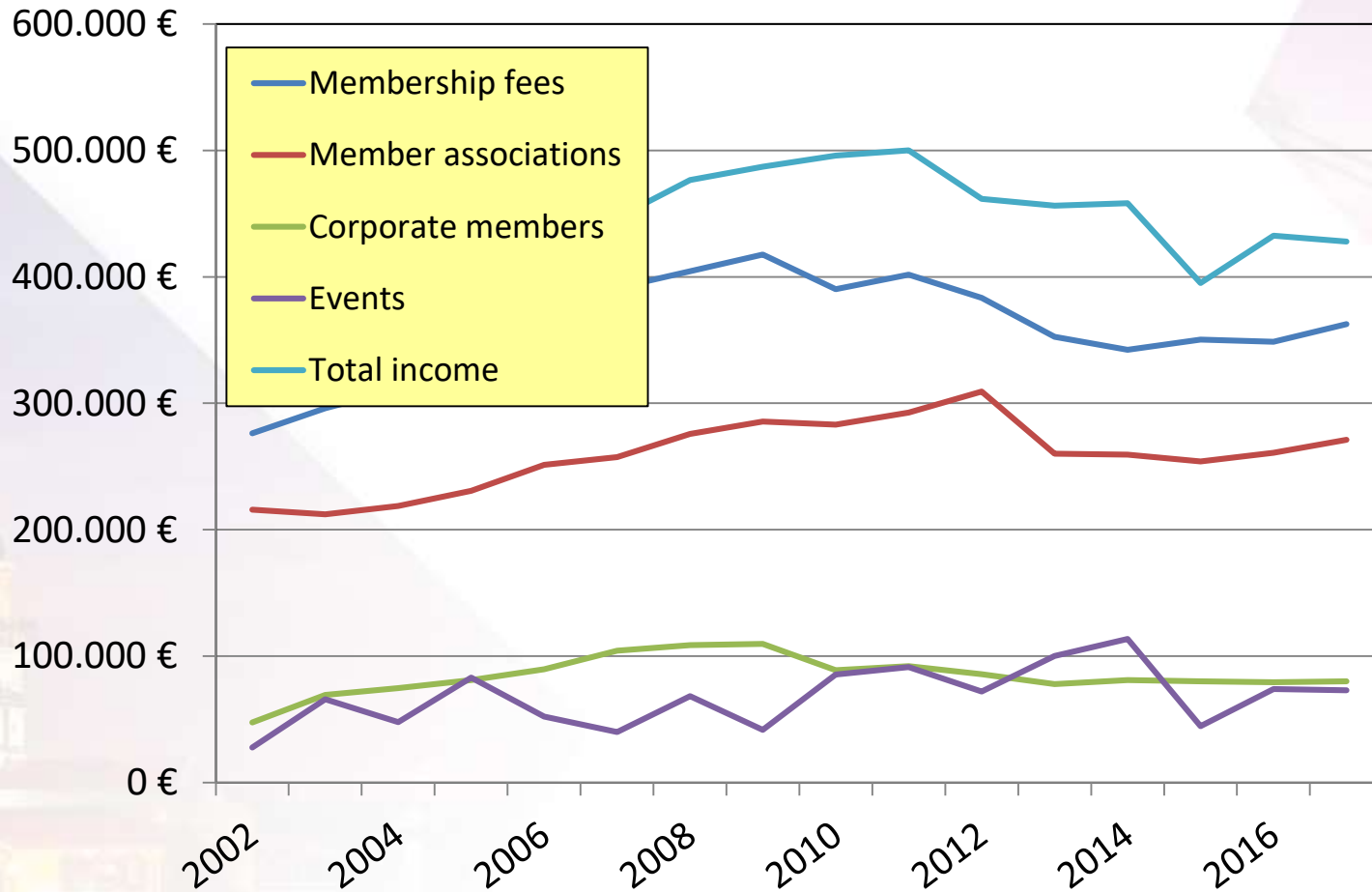
MAIN SUPPORTERS



PLATINUM SPONSORS



Income over time



Financial performance 2017 - 1

- **Subscription income €10,000 lower than budget!**
- **Increase from Member Associations (€10,000)**
- **Corporate members – lower (€5,000)**
- **Very high write offs (€50,000 - €18,000 higher than 2016)**
- **Arrears much lower than before but still €51,000 (€100,000 lower than 2014)**
- **Admin costs lower than budget - extraordinary (€50,000)**
- **Low interest in general !!!**

Financial performance 2017- 2

- Regular income / regular expenditure: €54,000 over budget
- Final result € 47,000 over budget
- Developmental expenditure lower than expected
- Working Week and other activities higher than expected (€11,000) – less expenditure
- Budgeted conference income registered in normal income, rest under "Projects and development"
- It is suggested to increase the events reserve from €25,000 to €50,000 (-> higher uncertainty!)



XXVI FIG Congress 2018

6-11 May 2018 ISTANBUL

EMBRACING OUR SMART WORLD WHERE THE CONTINENTS CONNECT:

ENHANCING THE GEOSPATIAL MATURITY OF SOCIETIES

2017 Accounts

- Auditors' opinion – true and fair view
- Surplus ordinary activities €64,313 (budget €10,250)
- **Key measure 1**
- Overall surplus €64,543 (budget 3,250)
- Overall surplus (after Conference reserve) €39,543
- Subscription arrears (2016:€ 110,734) €51,000

Motion: that the GA adopts the audited accounts for 2017

ORGANISED BY



MAIN SUPPORTERS



PLATINUM SPONSORS





XXVI FIG Congress 2018

6-11 May 2018 ISTANBUL

EMBRACING OUR SMART WORLD WHERE THE CONTINENTS CONNECT:

ENHANCING THE GEOSPATIAL MATURITY OF SOCIETIES

Subscriptions

-

Agenda item 19

ORGANISED BY



MAIN SUPPORTERS



PLATINUM SPONSORS



Subscriptions

- **Subscriptions 2012-2018 – no change**
- **Subscriptions 2019**
 - MA: 7.1% increase €4.80 per member (from €4.48)
 - AF: 3.9% increase €790 (from €760)
- Maximum level from 2010 – 5,500 members
- Minimum level from 2010 – the greater of 20 members and €50

Suggested same level in 2020



XXVI FIG Congress 2018

6-11 May 2018 ISTANBUL

EMBRACING OUR SMART WORLD WHERE THE CONTINENTS CONNECT:

ENHANCING THE GEOSPATIAL MATURITY OF SOCIETIES

Motion:

**that the GA approves
the member Association subscription rates for 2020**

ORGANISED BY



MAIN SUPPORTERS



PLATINUM SPONSORS





XXVI FIG Congress 2018

6-11 May 2018 ISTANBUL

EMBRACING OUR SMART WORLD WHERE THE CONTINENTS CONNECT:

ENHANCING THE GEOSPATIAL MATURITY OF SOCIETIES

FIG Budget

Annex C to General Assembly Finance Paper

ORGANISED BY



MAIN SUPPORTERS



PLATINUM SPONSORS



Key measures decided by GA

- Regular income exceeds expenditure each year
- An overall surplus is returned over the 4-year period
- General reserve is 90-100% of regular annual expenditure
[using 4-year averaging of expenditure]

Key issues 2018-2021

- **Target: Increase of Corporate Members (->TF for Corporate member)**
- **GA decided increase in subscription rate from 2019 for MAs**
- **Increase in subscription fee for Affiliate Members from 2019**
- **Administrative costs monitored carefully**
- **2018 is a congress year and therefore higher expenses than in other years**
- **Arrears / Payment of Arreas / Write-Offs**



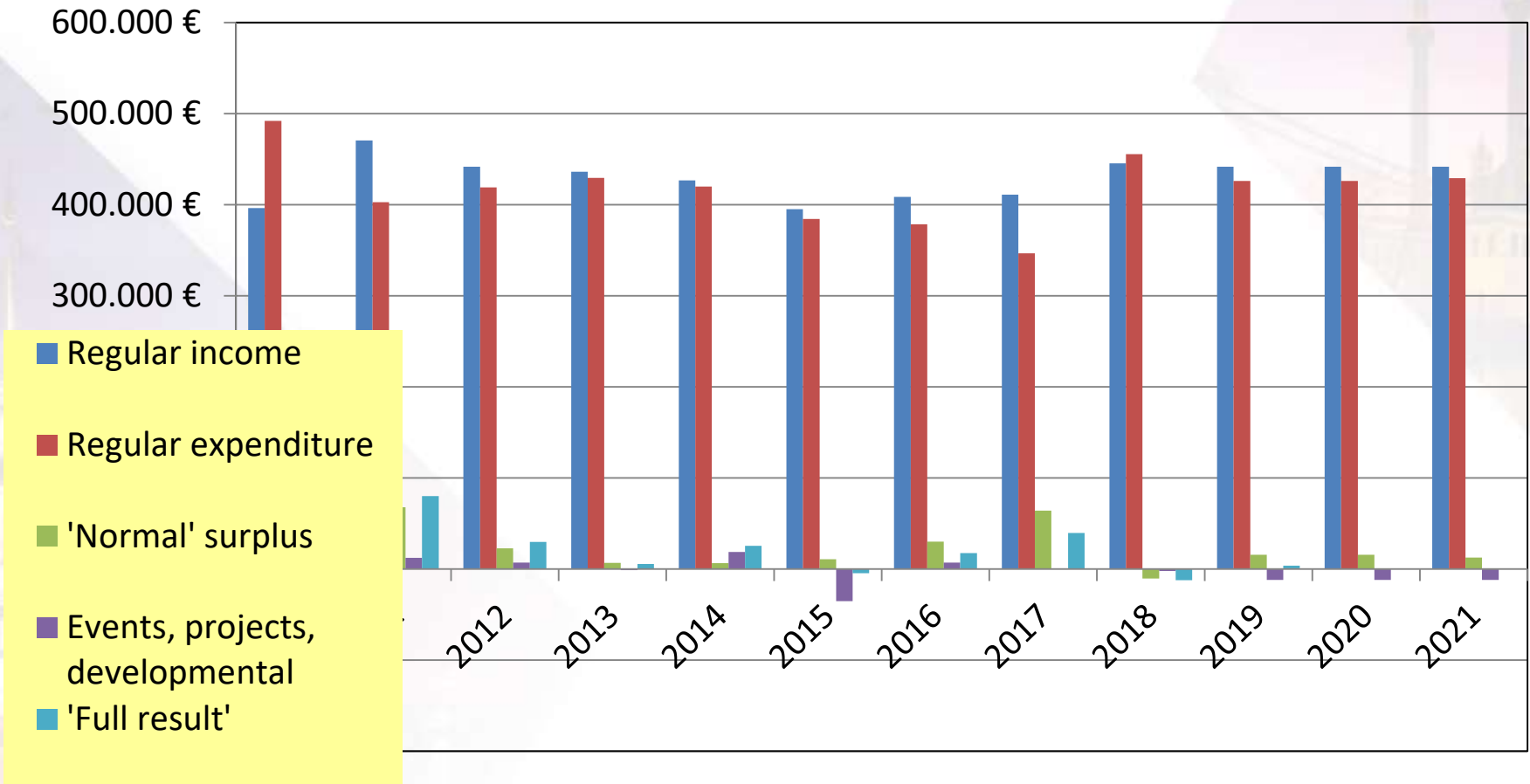
XXVI FIG Congress 2018

6-11 May 2018 ISTANBUL

EMBRACING OUR SMART WORLD WHERE THE CONTINENTS CONNECT:

ENHANCING THE GEOSPATIAL MATURITY OF SOCIETIES

Budget overview



ORGANISED BY



MAIN SUPPORTERS



PLATINUM SPONSORS





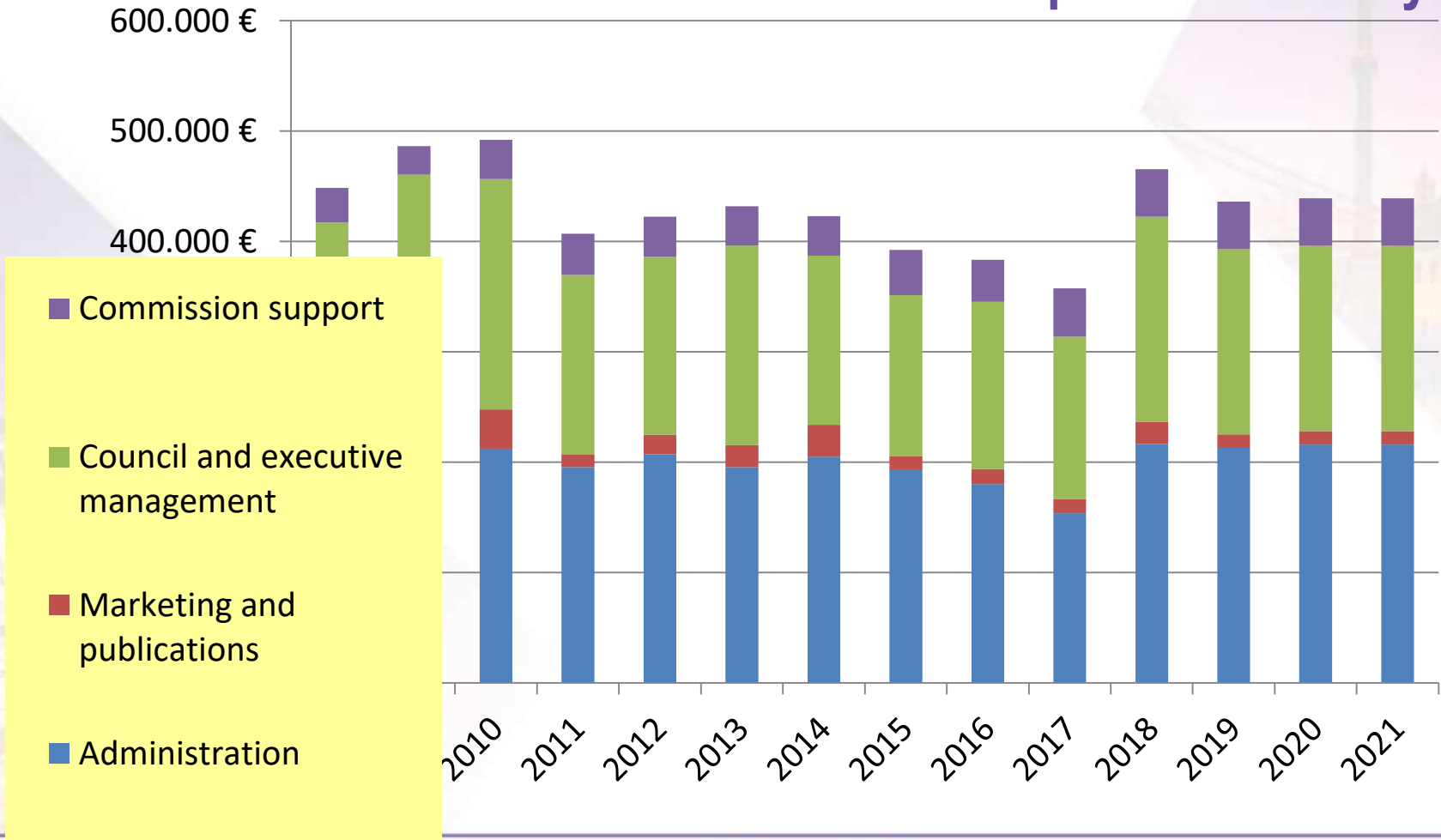
XXVI FIG Congress 2018

6-11 May 2018 ISTANBUL

EMBRACING OUR SMART WORLD WHERE THE CONTINENTS CONNECT:

ENHANCING THE GEOSPATIAL MATURITY OF SOCIETIES

Expenditure Analysis



ORGANISED BY



MAIN SUPPORTERS



PLATINUM SPONSORS



General reserve

