

FIG

FIG WORKING WEEK 2017

Helsinki Finland

29 May - 2 June 2017

**SURVEYORS' ROLE IN POST-SEISMIC SCENARIO:
THE EARTHQUAKE IN CENTRE ITALY**

Daniele Brancato, Luca Dal Buono
Alessandro Dalmasso, Cromwell Manaloto
Italy

Surveying the world of tomorrow -
From digitalisation to augmented reality

Organised by



Platinum Sponsors:



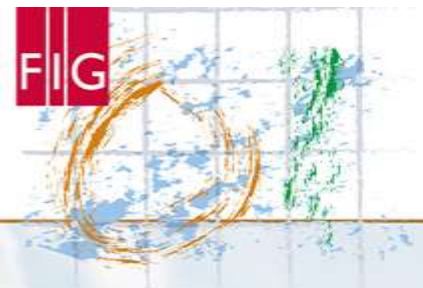


FIG WORKING WEEK 2017

Surveying the world of tomorrow -

Helsinki Finland 29 May - 2 June 2017

From digitalisation to augmented reality

2016



Platinum Sponsors:



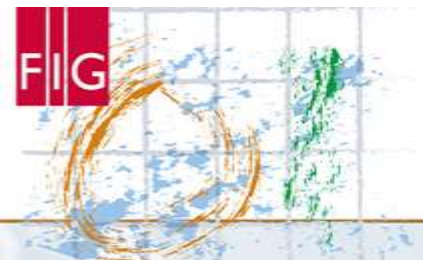
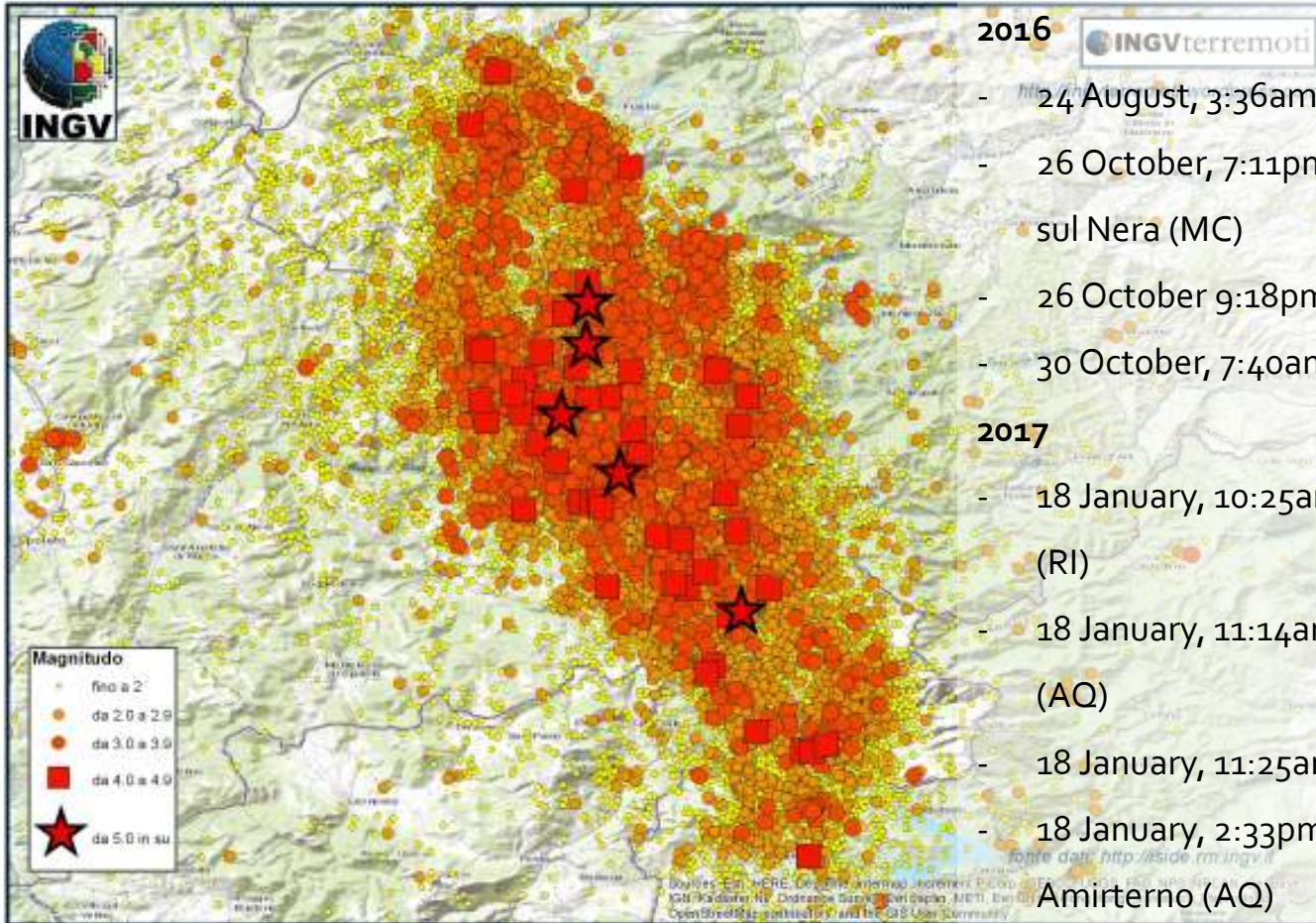


FIG WORKING WEEK 2017

Surveying the world of tomorrow -

Helsinki Finland 29 May - 2 June 2017

From digitalisation to augmented reality



Platinum Sponsors:



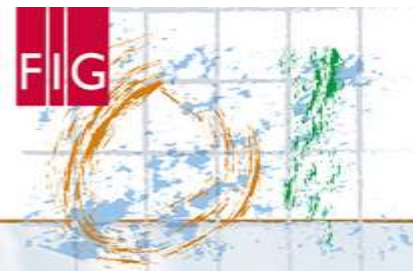
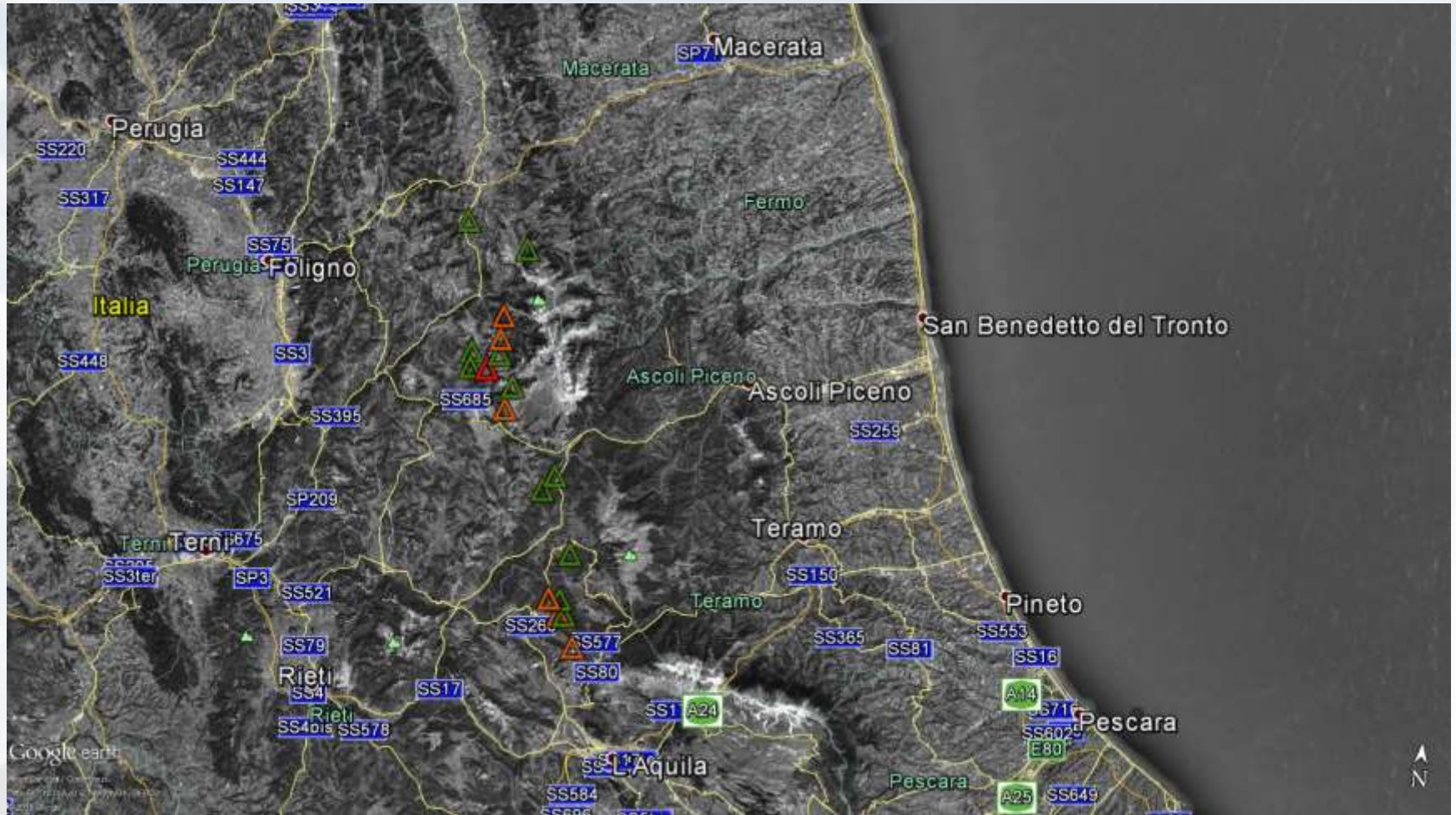


FIG WORKING WEEK 2017

Surveying the world of tomorrow -

Helsinki Finland 29 May - 2 June 2017

From digitalisation to augmented reality



Platinum Sponsors:



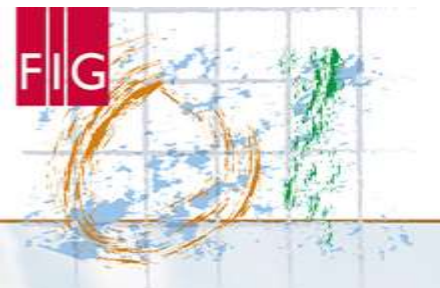


FIG WORKING WEEK 2017

Surveying the world of tomorrow -

Helsinki Finland 29 May - 2 June 2017

From digitalisation to augmented reality



Platinum Sponsors:



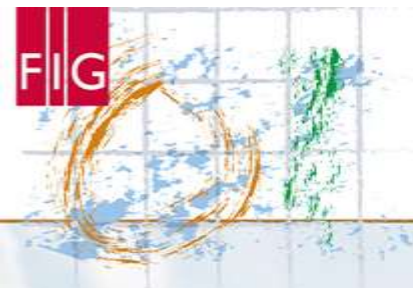
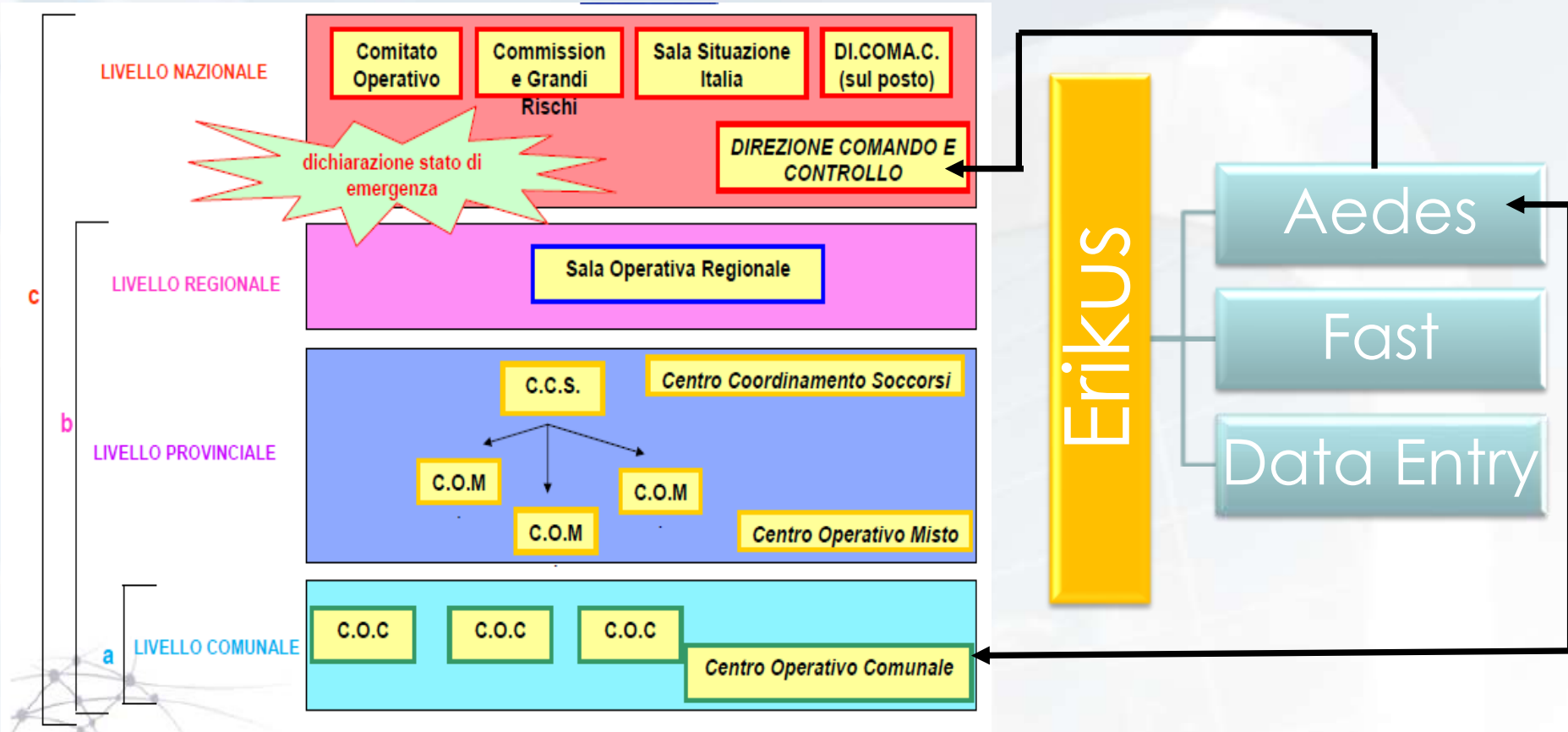


FIG WORKING WEEK 2017

Surveying the world of tomorrow -

Helsinki Finland 29 May - 2 June 2017

From digitalisation to augmented reality



Platinum Sponsors:



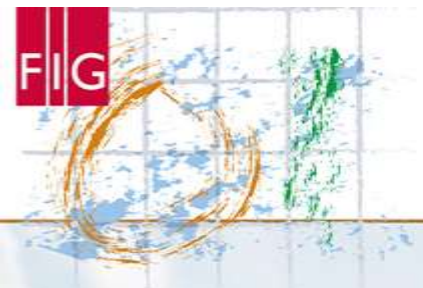
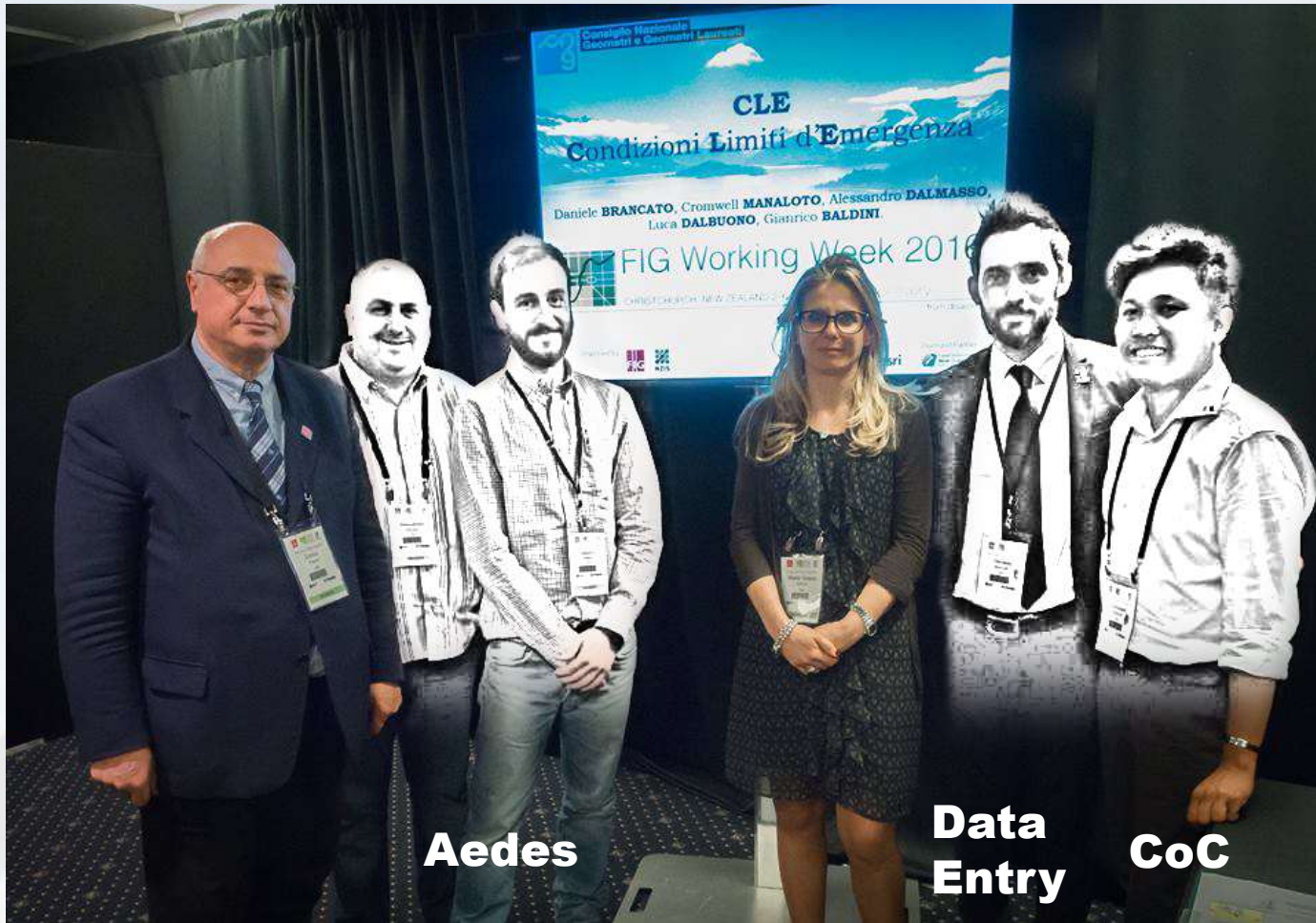


FIG WORKING WEEK 2017

Surveying the world of tomorrow -

Helsinki Finland 29 May - 2 June 2017

From digitalisation to augmented reality



Aedes

**Data
Entry**

CoC



Platinum Sponsors:



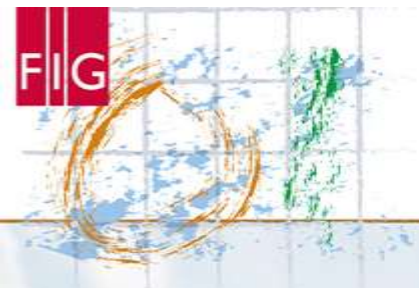


FIG WORKING WEEK 2017

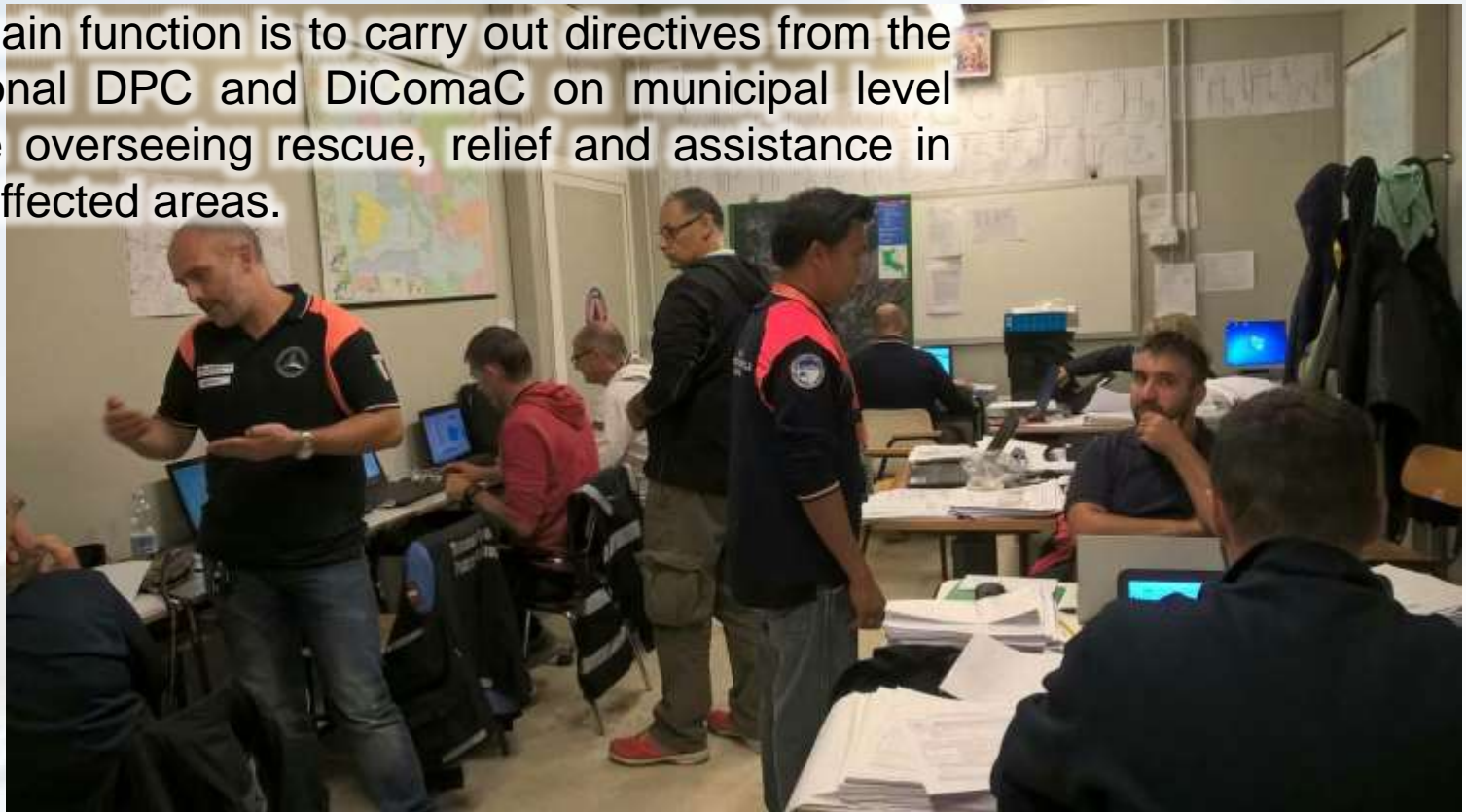
Surveying the world of tomorrow -

Helsinki Finland 29 May - 2 June 2017

From digitalisation to augmented reality

Centro Operativo Comunale - CoC

Its main function is to carry out directives from the National DPC and DiComaC on municipal level while overseeing rescue, relief and assistance in the affected areas.



Platinum Sponsors:



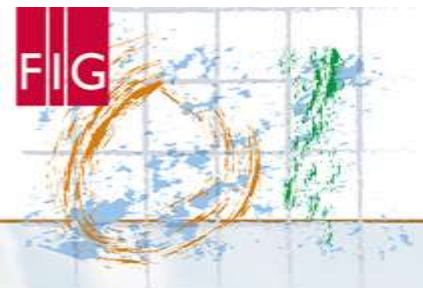


FIG WORKING WEEK 2017

Surveying the world of tomorrow -

Helsinki Finland 29 May - 2 June 2017

From digitalisation to augmented reality

Squadra AeDES and Damage Assessment

AeDES is the primary form compiled to assess and evaluate the structural damages that a building may have suffered at the event of an earthquake. Its principal parameter is the building's stability.



 **PROTEZIONE CIVILE**
Protezione del Patrimonio di Riserva
Servizi di Protezione Civile

 **CONSORZIO DELLE REGIONI DELLA PROVINCIA AUTONOMA**

SCHEDA DI 1° LIVELLO DI RILEVAMENTO DANNO, PRONTO INTERVENTO E AGIBILITÀ PER EDIFICI ORDINARI NELL'EMERGENZA POST-SISMICA
(AeDES 07/2013)

ID SCHEDA: _____

SEZIONE I - IDENTIFICAZIONE EDIFICIO

Provincia: _____
Comune: _____
Frazione/Localtà (denominazione Istat): _____
1 VIA _____ Nam. Civici _____
2 CORSO _____
3 VICOLO _____
4 PIAZZA _____
5 ALTRO _____
(Indicare cortile, località, traversa, salita, etc.)

COORDINATE piano UTM geografiche altro _____
Fuso _____ Datum _____ Nord/Sud _____
(32-33-34) ED50 _____
 WGS84 Est/Long _____

IDENTIFICATIVO SOPRALLUOGO
Squadra _____ Scheda n. _____ Data _____

IDENTIFICATIVO EDIFICIO
Istat Reg. _____ Istat Prov. _____ Istat Comune _____
N° aggregato _____ N° edificio _____

Cod. di Località Istat _____ Tipo carta _____
Sec. di censimento Istat _____ N° carta _____

Dati catastali Foglio _____ Allogato _____
Particelle _____

Posizione edificio Isolato Interno D'estremità D'angolo



Platinum Sponsors:



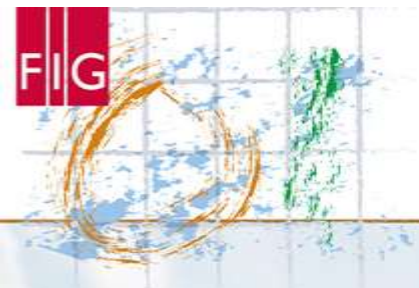


FIG WORKING WEEK 2017

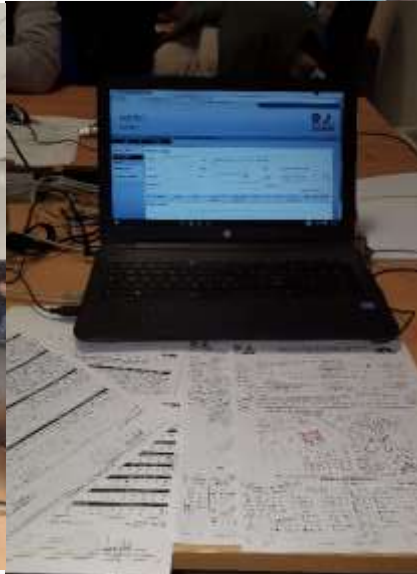
Surveying the world of tomorrow -

Helsinki Finland 29 May - 2 June 2017

From digitalisation to augmented reality

DATA ENTRY

Conducted inside the DiComaC, the primary objective of activities pertaining to data entry is data verification and quality control, and archiving.



Platinum Sponsors:



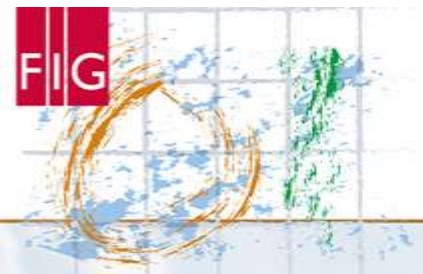


FIG WORKING WEEK 2017

Surveying the world of tomorrow -

Helsinki Finland 29 May - 2 June 2017

From digitalisation to augmented reality

ERIKUS

APPLICATIVO PER LA GESTIONE DELLE RICHIESTE DI SOPRALLUOGO PRESENTATE DAI CITTADINI AI COC

Realizzato dalla Regione Piemonte - Settore Sismico e Aipa Piemonte - DT Geologia e Dissesto



ERikuS

ERikuS is a QGIS project designed by the Piedmont Region in accordance to the DPC's directive of finding a suitable platform for data collection and management on the onset of a seismic event.

- Acts as a support software
- Optimizes the request application and retrieval by associating cadastral data with the DPC's aggregate maps and local orthophotos
- Plots and furnishes real-time damage map
- Integrates survey schedules by providing the necessary data (damage type, location and gps coordinates, reference person, phone numbers)



Platinum Sponsors:



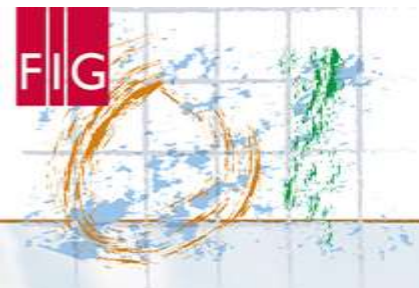


FIG WORKING WEEK 2017

Surveying the world of tomorrow -

Helsinki Finland 29 May - 2 June 2017

From digitalisation to augmented reality

Conclusion:

Strengths

- a) Rapid response during rescue operations
- b) Quick damage cost estimate as needed by the authorities for fund allocations for reconstruction, recovery and aides
- c) Overview of the total impact of the calamity over the territory and population
- d) Availability of different data ready for dissemination
- e) Exclusive dependence on volunteer professionals (cost reduction)

Weaknesses

- a) Lack of enough trained professional to carry out the inspections (capacity building trainings weren't enough)
- b) Prolonged time of execution and data elaboration
- c) Lack of mobile applications during data collection (paper-based modules)
- d) Lack of standard procedures and protocol
- e) Exclusive dependence on volunteer professionals (manpower)



Platinum Sponsors:



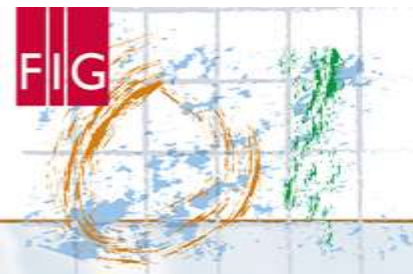


FIG WORKING WEEK 2017

Surveying the world of tomorrow -

Helsinki Finland 29 May - 2 June 2017

From digitalisation to augmented reality

QGIS 2.14.6-Essen - ERIKUS - Copia (2)

Project Edit View Layer Settings Plugins Vector Raster Database Web Processing Help

Thank you for your attention

Consiglio Nazionale Geometri e Geometri Laureati

YSN

Coordinate: 13.2979,42.6286 Scale: 1:7.887 Rotation: 0,0 Render EPSG:3857 (OTF)



Platinum Sponsors:

