


# Impediments in e-Planning in Local Government – Indonesian Case Study

Heri SUTANTA, Abbas RAJABIFARD, Ian BISHOP  
Department of Geomatics, University of Melbourne



THE UNIVERSITY OF  
MELBOURNE



## Content

- Introduction
- Spatial planning
- Spatial data in spatial planning
- e-Planning
- Impediments in e-Planning – Indonesian case study
- Conclusion & Recommendations

Department of Geomatics  
The Centre for Spatial Data Infrastructures & Land Administration



## Introduction

- Spatial planning is about decision on future use of space
- It needs to be conducted transparently and involving participation from public
- Electronic delivery of planning (e-Planning) will greatly enhance transparency and accountability
- e-Planning enable greater public participation
- However, it requires extensive resources and infrastructures, which may not be available in every country

Department of Geomatics  
The Centre for Spatial Data Infrastructures & Land Administration



## Spatial Planning

- Allocation, forming, sizing and harmonizing future use of space
- Based on coverage:
  - National / federal
  - Provincial / state
  - District / local / municipality
- Based on content:
  - General spatial plan
  - Detail spatial plan

Department of Geomatics  
The Centre for Spatial Data Infrastructures & Land Administration



## Spatial Data in Spatial Planning

- Spatial data are important element in spatial planning
- Basic specification of spatial plan map in Indonesia

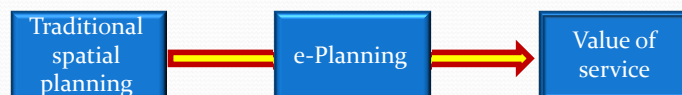
Level	Scale	Remark
National	1 : 1,000,000	
Provincial	1 : 250,000 or 1:100,000 or 1:50,000	depends on the coverage of the province
District (Kabupaten)	1: 100,000 or 1:50,000 or 1:25,000	depends on the coverage of the district
City ( )	1:50,000 or 1:25,000 or 1:10,000	depend on the coverage of the city

Department of Geomatics  
The Centre for Spatial Data Infrastructures & Land Administration




## e-Planning (1)

- Part of e-Government initiative to deliver spatial planning process online, aimed to increase value of service



- E-Planning requires: internet infrastructure, policy and resources

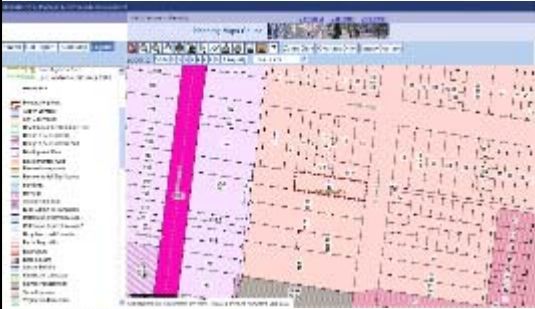

Department of Geomatics  
The Centre for Spatial Data Infrastructures & Land Administration




## e-Planning

- Some examples:
 

<p>Department of Planning &amp; Community Development , Victoria</p>	<p>City of Sabang , Aceh, Indonesia</p>
--	---

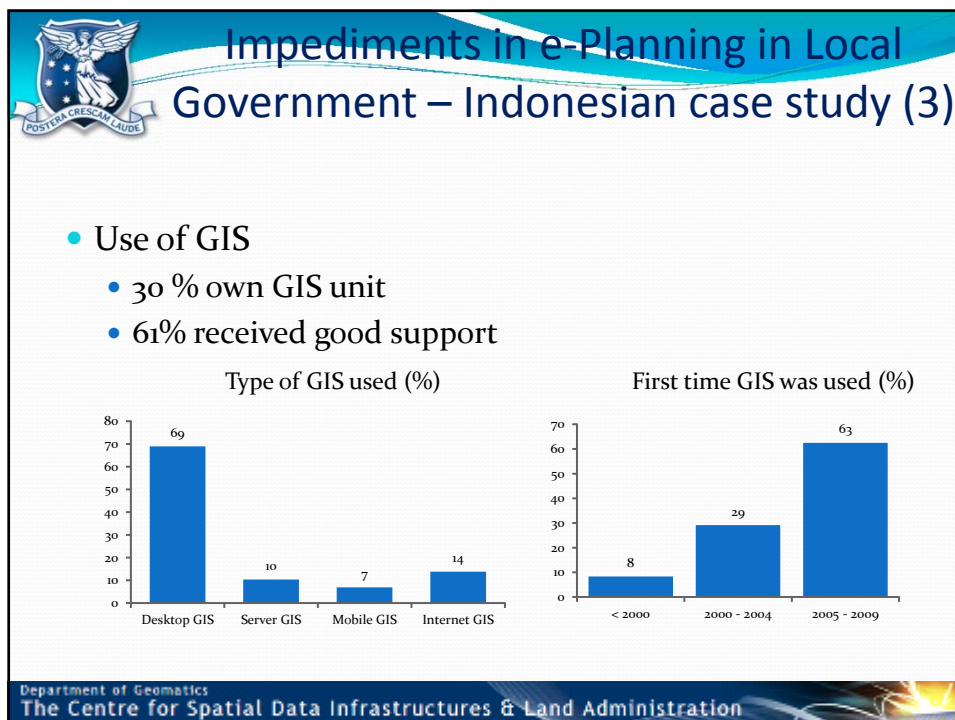
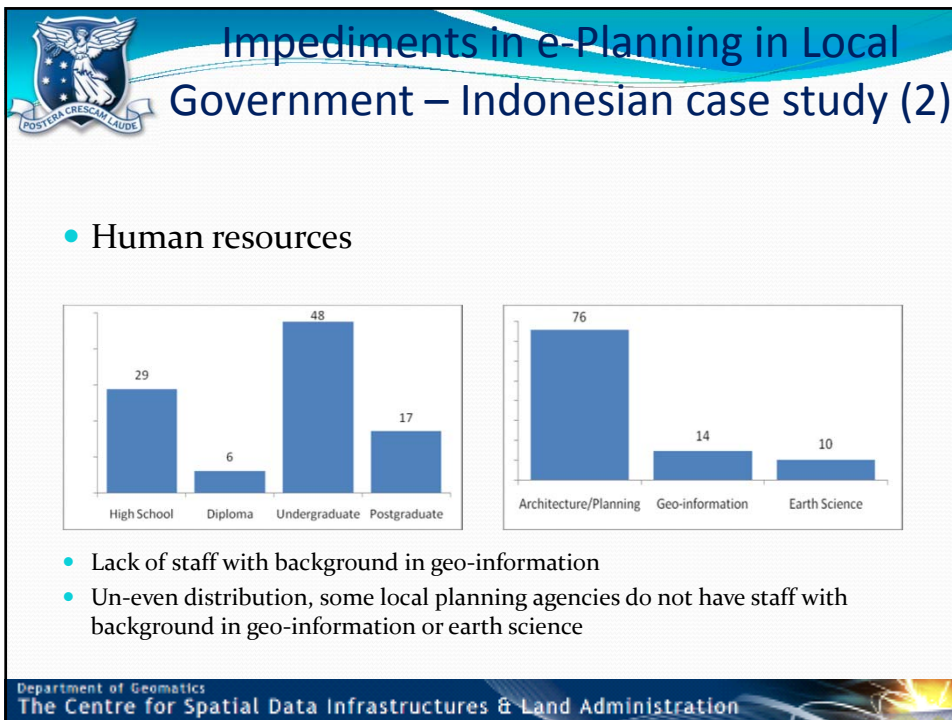
Department of Geomatics  
The Centre for Spatial Data Infrastructures & Land Administration




## Impediments in e-Planning in Local Government – Indonesian case study (1)

- A survey was conducted in 2009, covers topics on institutional aspects, human resources, ICT infrastructure, spatial planning and spatial data infrastructures
- Respondents: 34 local planning agencies from 17 provinces
- Impediments:
  - Human resources
  - Use of GIS
  - ICT Infrastructures
  - Policy / institutional arrangement

Department of Geomatics  
The Centre for Spatial Data Infrastructures & Land Administration





## Impediments in e-Planning in Local Government – Indonesian case study (4)

- ICT Infrastructures
  - Currently not adequate and up to date
  - Limited internet connection available
  - Internet GIS was limitedly developed and use
  - Available internet connection was limitedly used for spatial data dissemination

Department of Geomatics  
The Centre for Spatial Data Infrastructures & Land Administration



## Impediments in e-Planning in Local Government – Indonesian case study (5)

- Policy / institutional arrangement
  - The policy on spatial data infrastructures has just recently released (2007) by the central government
  - Cooperation between government agencies mostly based on gentlemen's agreement, not based on regulation or MOUs

Department of Geomatics  
The Centre for Spatial Data Infrastructures & Land Administration



## Conclusion & Recommendations

- Some impediments were found in implementing e-Planning in the local government in Indonesia: human resources, use of GIS, ICT Infrastructures, policy / institutional arrangement
- Regulation and directive from central government are required to overcome problems found in the local government
- Effective funding mechanism should be arranged to speed up the process toward e-Planning in local government
- Government policy on preparing Law on Geospatial Information and national broadband network will be very beneficial to the e-Planning in local government

Department of Geomatics  
The Centre for Spatial Data Infrastructures & Land Administration

## Thank you

Heri SUTANTA, Abbas RAJABIFARD, Ian BISHOP  
Centre for Spatial Data Infrastructures and Land Administration  
Department of Geomatics, University of Melbourne

<http://www.csdila.unimelb.edu.au/>