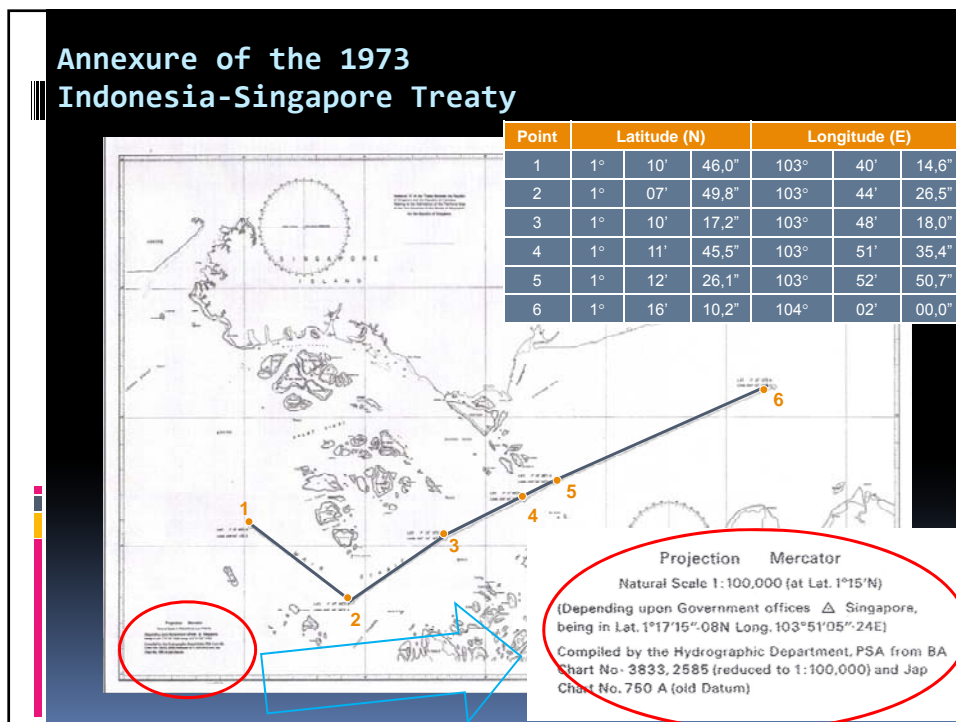
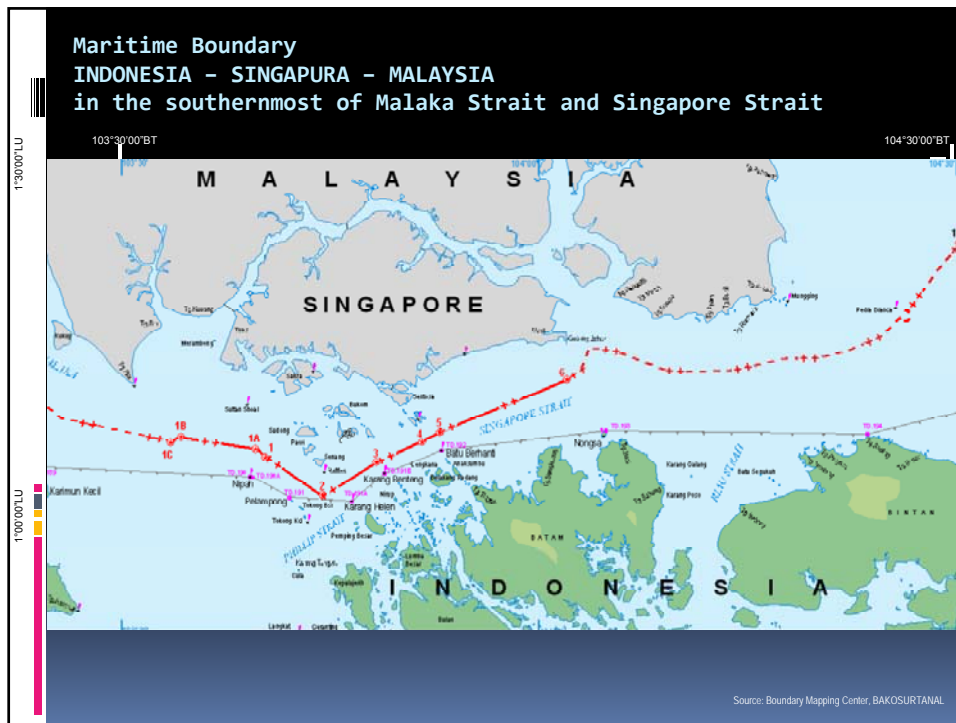


# The Geodetic Datum Problems of the Territorial Sea Boundary Between the Republic of Indonesia and the Republic of Singapore

Astrit RIMAYANTI and Sora LOKITA  
TS 11 – Administration of Marine Spaces  
FIG Congress 2010- Sydney, Australia

## OUTLINE

- *Background*
- *Objectives*
- *Research Method*
- *Result*
- *Conclusion*



## Objective

Examine several available methods to transform the 1973 boundary coordinates to the WGS84

## Data & Research Method

- **Data:** *British Admiralty Chart (BAC) 3833 of 1967 and 2005, the physical characteristic of the Indonesia-Singapore maritime boundary (the Geographer, 1974), Boundary Coordinates of the 1973 Treaty, Datum transformation Parameter*
- **Research Method:** Processing data using transformation datum and chart-fitting method.

## Result: Datum Transformation Method

Point	Kertau 1948 to WGS84		Kertau 1968 to WGS84	
	Latitude (N)	Longitude (E)	Latitude (N)	Longitude (E)
1	1° 10' 45.85"	103° 40' 08.44"	1° 10' 45.82"	103° 40' 08.52"
2	1° 07' 49.17"	103° 44' 20.31"	1° 07' 49.13"	103° 44' 20.39"
3	1° 10' 17.05"	103° 48' 11.78"	1° 10' 17.02"	103° 48' 11.86"
4	1° 11' 45.35"	103° 51' 29.15"	1° 11' 45.32"	103° 51' 29.23"
5	1° 12' 25.95"	103° 52' 44.44"	1° 12' 25.91"	103° 52' 44.52"
6	1° 16' 10.03"	104° 01' 53.67"	1° 16' 10.00"	104° 01' 53.75"
Point	Genuk to WGS84		South Asia to WGS84	
	Latitude (N)	Longitude (E)	Latitude (N)	Longitude (E)
1	1° 10' 43.96"	103° 40' 21.24"	1° 10' 45.16"	103° 40' 14.46"
2	1° 07' 47.28"	103° 44' 33.11"	1° 07' 48.46"	103° 44' 26.36"
3	1° 10' 15.16"	103° 48' 24.59"	1° 10' 16.36"	103° 48' 17.86"
4	1° 11' 43.45"	103° 51' 41.96"	1° 11' 44.67"	103° 51' 35.26"
5	1° 12' 24.05"	103° 52' 57.25"	1° 12' 25.27"	103° 52' 50.56"
6	1° 16' 08.13"	104° 01' 06.49"	1° 16' 09.37"	104° 01' 59.86"

Source: Z. A., Hasanuddin, 2005

## Result: Datum Transformation Method

Point	Coordinates of KERTAU 1948 reduced by its coordinates in WGS'84			Coordinates of KERTAU 1968 reduced by its coordinates in WGS'84		
	dφ	dλ	d (m)	dφ	Dλ	d (m)
1	0°.15	6".16	190.5	0°.18	6".08	188.0
2	0°.13	6".19	191.4	0°.17	6".11	189.0
3	0°.15	6".22	192.4	0°.18	6".14	189.9
4	0°.15	6".25	193.3	0°.18	6".17	190.8
5	0°.15	6".26	193.6	0°.19	6".18	191.1
6	0°.17	6".33	195.8	0°.20	6".25	193.3
Point	Coordinates of GENUK reduced by its coordinates in WGS'84			Coordinates of reduced by its coordinates in WGS'84		
	dφ	dλ	d (m)	dφ	Dλ	d (m)
1	2".04	-6".64	214.7	0".84	0".14	26.02
2	2".02	-6".61	213.7	0".84	0".14	26.03
3	2".04	-6".59	213.0	0".84	0".14	26.02
4	2".05	-6".56	212.4	0".83	0".14	26.01
5	2".05	-6".55	212.2	0".83	0".14	26.00
6	2".07	-6".49	210.5	0".83	0".14	25.98

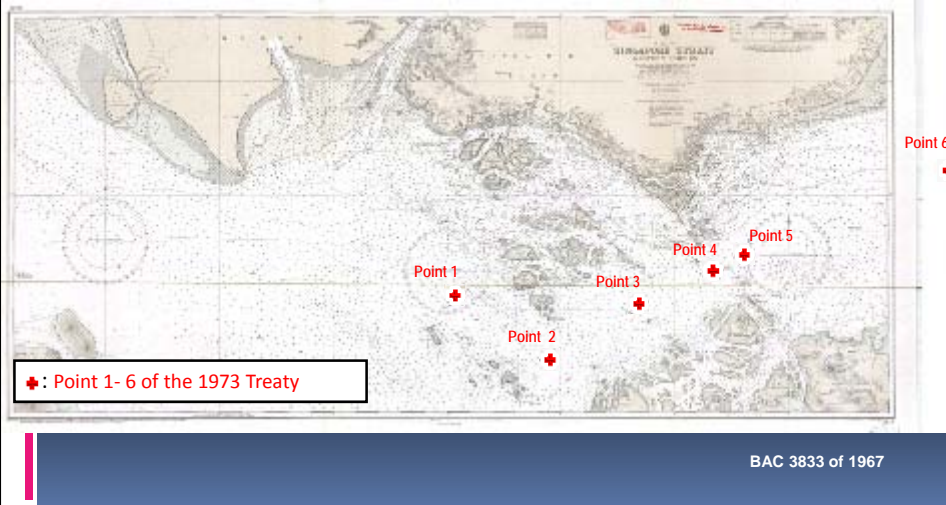
Source: Z. A., Hasanuddin, 2005

## Result: Datum Transformation Method

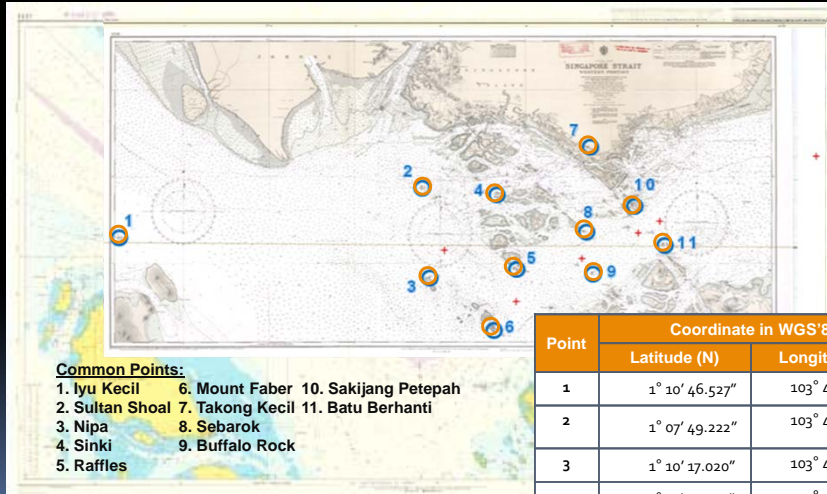
Point	Coordinates of 1973 Treaty to WGS84 Coordinates of the Calculation of Singapore	
	Latitude (N)	Longitude (E)
1	1° 10' 46.184"	103° 40' 14.133"
2	1° 07' 49.504"	103° 44' 26.005"
3	1° 10' 17.399"	103° 48' 17.471"
4	1° 11' 45.698"	103° 51' 34.842"
5	1° 12' 26.297"	103° 52' 50.131"
6	1° 16' 10.395"	104° 01' 59.354"

Source: The Singaporean Maritime Port of Authority

## Result: Chart-fitting method



## Result: Chart-fitting method



Point	Coordinate in WGS'84	
	Latitude (N)	Longitude (E)
1	1° 10' 46.527"	103° 40' 14.791"
2	1° 07' 49.222"	103° 44' 26.544"
3	1° 10' 17.020"	103° 48' 17.205"
4	1° 11' 45.537"	103° 51' 34.997"
5	1° 12' 26.339"	103° 52' 50.313"

Source: Boundary Mapping Center, BAKOSURTANAL, 2009

## Result:

Point	South Asia to WGS84 using transformation method		Coordinates of 1973 Treaty to WGS84 Coordinates of the Singapore's Calculation		Coordinates of 1973 Treaty to WGS84 Coordinates using chart-fitting method	
	Latitude (N)	Longitude (E)	Latitude (N)	Longitude (E)	Latitude (N)	Longitude (E)
1	1° 10' 45.16"	103° 40' 14.46"	1° 10' 46.184"	103° 40' 14.133"	1° 10' 46.527"	103° 40' 14.791"
2	1° 07' 48.46"	103° 44' 26.36"	1° 07' 49.504"	103° 44' 26.005"	1° 07' 49.222"	103° 44' 26.544"
3	1° 10' 16.36"	103° 48' 17.86"	1° 10' 17.399"	103° 48' 17.471"	1° 10' 17.020"	103° 48' 17.205"
4	1° 11' 44.67"	103° 51' 35.26"	1° 11' 45.698"	103° 51' 34.842"	1° 11' 45.537"	103° 51' 34.997"
5	1° 12' 25.27"	103° 52' 50.56"	1° 12' 26.297"	103° 52' 50.131"	1° 12' 26.339"	103° 52' 50.313"
6	1° 16' 09.37"	104° 01' 59.86"	1° 16' 10.395"	104° 01' 59.354"	1° 16' 10.111"	104° 02' 00.471"

## Conclusion

- *The chart fitting method, arguably is the most suitable and acceptable method to obtain the coordinates of 1973 Treaty in the WGS'84*
- *The dissemination of the treaty and its "new-technically" coordinates is needed for operational purposes*



**THANK YOU**

