

11 – 16 April 2010

Dynamic Modeling of Land Use and Coverage at Quarta Colônia, RS, Brazil

Rudiney Soares PEREIRA

Renata FERRARI

Mariane Alves DAL SANTO

www.fig2010.com



Universidade Federal de Santa Maria, RS, Brasil

XXIV FIG International Congress 2010
11-16 April



Introduction

- *We have a many questions about changes and coverage patterns of the earth due to the accelerated process and environment impacts*
- *Incorporation of integrated scientific models with focus on social and ecological characteristics of the places and regions*
- *On the most used simulation models in studies of landscape is stochastic model (transition matrix), relationship of these changes*

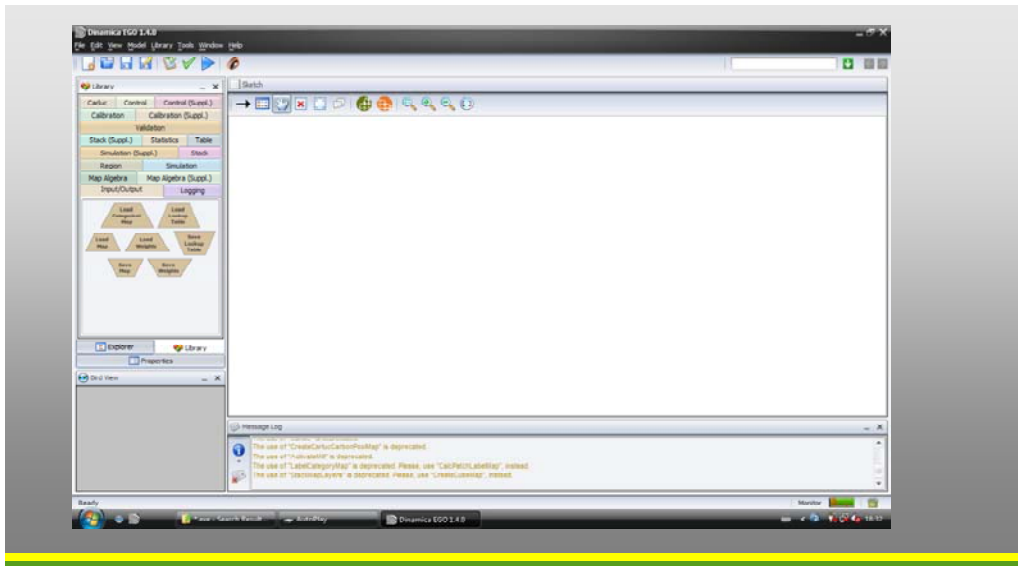
Materials

- *Study area:*
 - *Fourth Colony in Rio Grande do Sul State, Brazil*
 - *South latitude: 29°09' to 29°58'*
 - *West longitude: 53°10' to 53°55'*
- *Data Images:*
 - *TM and ETM+ Landsat, years 1988, 2002 and 2008*
 - *Topograph charts, 1:50.000 scale*
- *Simulation software:*
 - *Dinamica EGO (Environment for Geoprocessing Objects)*

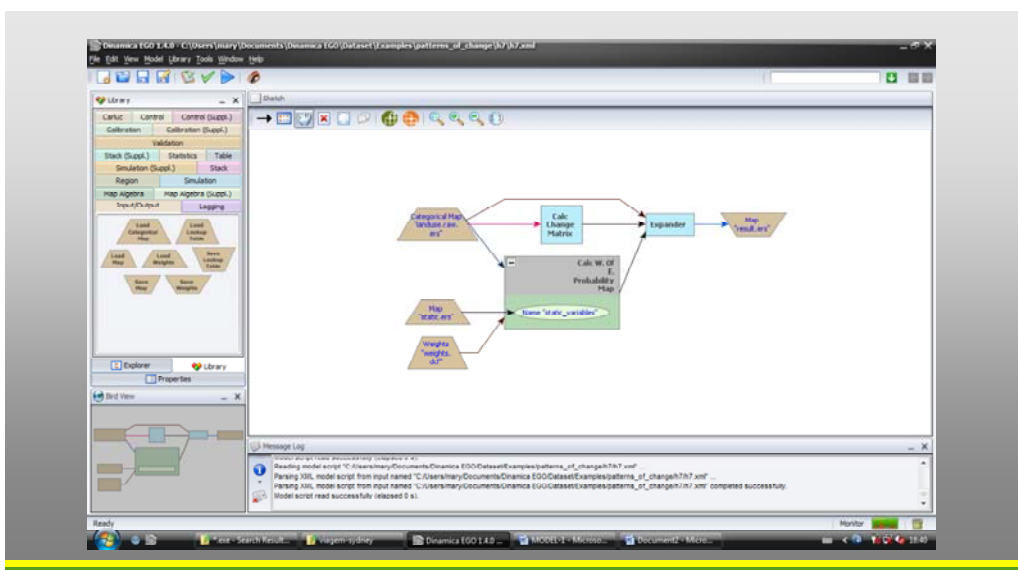
Methodological procedures

- *Supervised classification data images – thematic maps, land use and land cover*
- *Digital Topographic Database obtained of the Shuttle Radar Topography Mission*
- *Distance maps was grouped into classes of distances with a same range, buffers predetermined*
- *Steps in Dinamica EGO software*
 - *Determination of the transition matrix from 1988 to 2002 and from 2002 to 2008 years; evidence as weights of the variables; applying correlation; calculation of maps*
 - *Model validation through fuzzy method using the procedures of exponential decay function and the function decay constant*
 - *Simulation model for the 2018 year*

GUI Dinamica software



Example graphic model

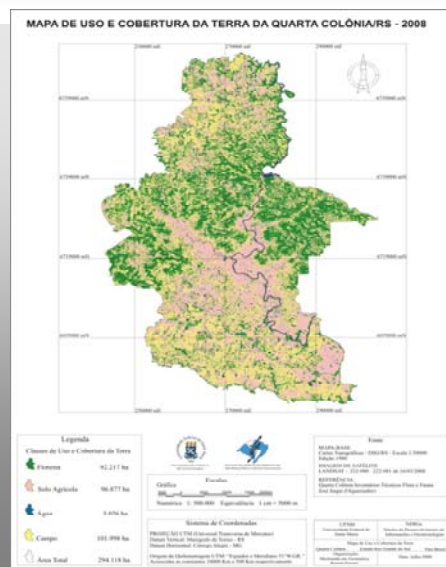
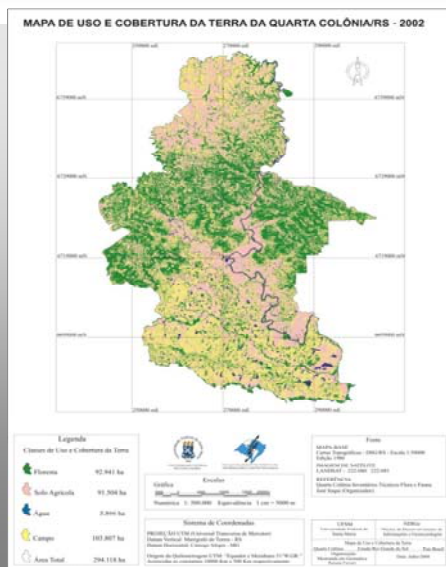


Results

- Classification images – Kappa index with values around the 0.99;

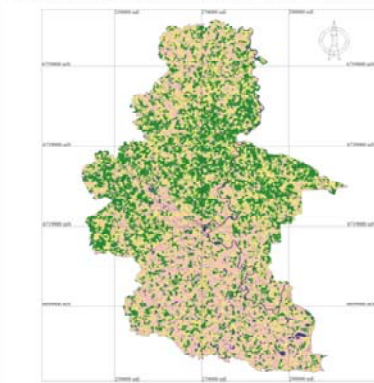
Use Classes and coverage Earth	Use 1988	Use 2002	Use 2008
Forest	89,187	92,941	93,217
Field	117,726	103,807	101,332
Agricultural soil	85,155	91,504	96,544
Water	2,050	5,866	3,025
Total	294,118	294,118	294,118

Thematic maps: years 2002 and 2008



Thematic map: year 2018

MAPA DE USO E COBERTURA DA TERRA DA QUARTA COLÔNIA/RS - 2018



Land use and coverage to 2018

Use Classes and coverage (ha)	Use 1988	Use 2002	Use 2008	Forecast Use 2018
Forest	89,18	92,941	92,216	91,054
Field	117,72	103,80	101,33	101,03
Agricultural soil	85,15	91,50	96,54	96,16
Water	2,05	5,86	3,02	5,86
Total	294,11	294,11	294,11	294,11

Conclusions

•The quantification of simulated 2018 map also contributes to reaffirm that the trends of development (increase/decrease) remain virtually the same views changes land use and cover between periods of 1988-2002 and 2002-2008

•The platform used for modeling in Dinâmica EGO proved satisfactory compliance of the objectives of this work, by support, and other characteristics, an open and flexible framework for the use of different methods of parameterization and variable sets which associated wisely, attended the specificities of modeling study area, with special patterns of coverage conversion use and land cover.

References

- BONHAM-CARTER, G. F. 1994. *Geographic Information Systems for Geoscientists: Modelling with GIS*. Ontario: Pergamon, 305 p.
- BURROUGH,P.1998.*Dynamic Modelling And Geocomputation: Primer Geocomputation*. P. Longley, M. Batty and r. McDonnel. Leónfelipecuartoc, John Wiley & Sons.
- SOARES FILHO, B. 2001. *DINAMICA – Um software para simulação de dinâmica de paisagens*. Anais do II Workshop em Tratamento de Imagens, NPDI/DCC/UFMG.

Thank you for your attention!

