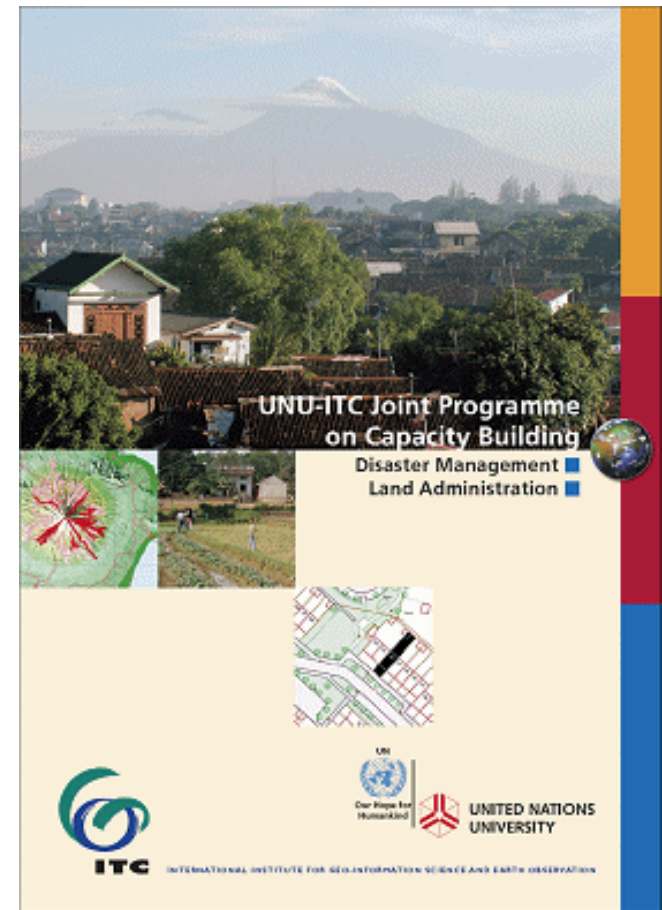


UNU School for Land Administration Studies



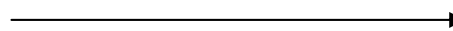
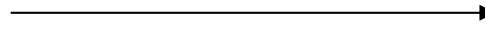
School of Land Administration Studies

- Within the framework of the UNU-ITC Joint Programme (2005) on Capacity Building in Disaster Management and Land Administration
- Joint venture (2006) from ITC/PGM department and Dutch Cadastre, Land Registry and National Mapping Agency



Capacity Building in Land Administration

- Scientific
 - concepts
 - models
 - methodology
- Operational
 - operations
 - management
 - governance



School of Land Administration Studies; education

- MSc Degree Course in Land Administration, 18 months (P-G course, 9 months)
- Scientific concepts, models and methods of land administration
- Operational aspects of creating a land administration organization that performs on a day-to-day basis
- Information technology and information management for land administration systems and spatial data infrastructures
- Research methods, MSc research and thesis writing



Photo: Gerard Kuster



Photo: Gerard Kuster

School of Land Administration Studies; education

- Short, tailor made and refresher courses
- To meet the growing need for professional training in land administration

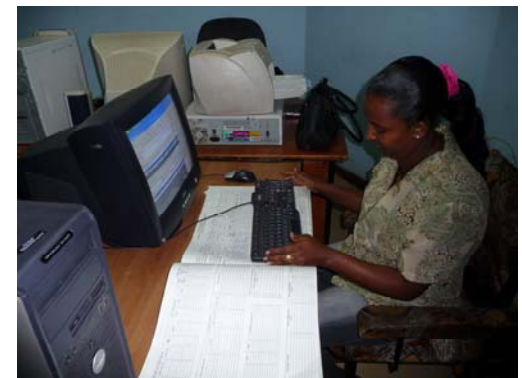


- At ITC or on location
 - 2008: China, Ghana, Hungary, Namibia, Senegal, Tanzania
 - Scheduled for 2009: Mongolia, Namibia, Nepal, Vietnam, Indonesia

School of Land Administration Studies; research



- Land Administration for Informed Governance (2006-2010)
- Three problem fields
 - Innovative land administration systems and governance
 - Geo-ICT for innovative land administration systems
 - Drivers for investment in land administration systems
- PhD research and visiting scientists



School of Land Administration Studies; (PhD) research

- Institutional and Technological Aspects of Quality Improvements of Deteriorated Cadastre in Islamic Republic of Pakistan (*Zahir Ali*)



- Nomadic Pastoralism in Land Administration (*Monica Lengoiboni*)

School of Land Administration Studies; (PhD) research

Design of National Land Information System (NLIS) under Uncertainty: Land Privatization in Mongolia
(*Naranchimeg Bagdai*)



- Integrated Land Administration: Towards re-engineering land administration models in dynamic customary tenure systems of Ghana (*Anthony Arko-Adjei*)

School of Land Administration Studies; project services

- Guatemala: Design and implementation of the Technical Study Programme in Land Registration
- Rwanda: Training Needs analysis and development of a Post-Graduate Programme in Land Administration
- Vietnam: Training Needs Analysis
- Uzbekistan: Land Administration



School of Land Administration Studies; knowledge exchange

- Knowledge exchange
 - UN-EGM Bangkok, 2005
 - Executive Workshop, Windhoek 2006
 - UN-Habitat EGM Nairobi, 2007
 - Decision Makers meeting, Tokyo 2007



School of Land Administration Studies; networking

- Active member of UN Global Land Tool Network (GLTN)



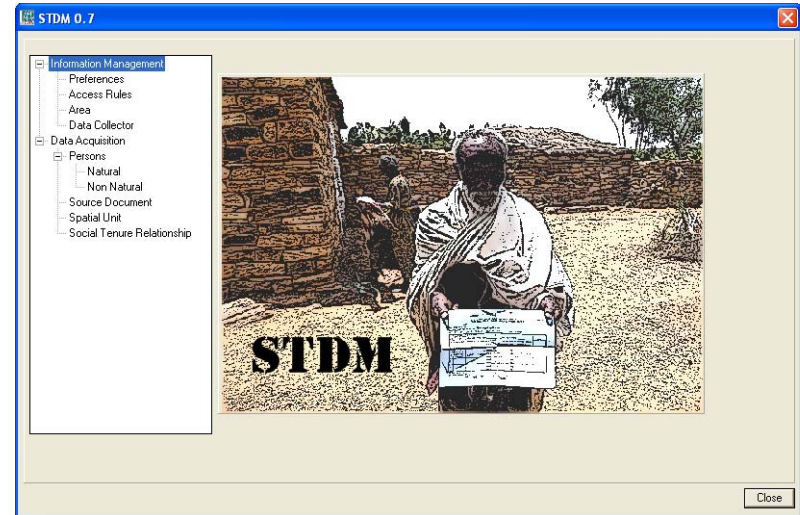
- Global Land Administration Network (ITC alumni)

- Academic Partnership in Land Administration
 - Strengthening the network for capacity building
 - Education, research, advisory services, mobility
 - North <-> South
North <-> North
South <-> South



School of Land Administration Studies; networking

- Social Tenure Domain Model, **STDM** (open source pro poor land tool) in close cooperation with GLTN, UN-Habitat and FIG



- Transparency in Land Administration (TLA) in cooperation with GLTN/UN-Habitat (TCBB)
 - 2008: Sub-Saharan Africa
 - 2009: Asia



UN

Our Hope for
Humankind



ITC an Associated Institution of the

**UNITED NATIONS
UNIVERSITY**



Thank you



Additional information

E: paresi@itc.nl

I: www.itc.nl/unu/la/default.asp



INTERNATIONAL INSTITUTE FOR GEO-INFORMATION SCIENCE AND EARTH OBSERVATION