

Slovenian Experiences

An example from a transition country

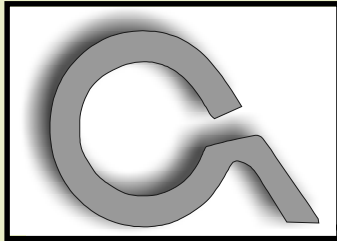
Milan Brajnik, B.Sc.Geod.,
Assistant Director

milan.brajnik@geod-is.si

Geodetic Institute of Slovenia

1000 Ljubljana, Jamova cesta 2

The Identity Card



Geodetski inštitut Slovenije
Geodetic Institute of Slovenia
Institut Géodésique de Slovénie
Geodätisches Institut Sloweniens

Activities in research, development and operative projects:

- Land cadastre and real estate
- Fundamental geodesy and national GPS network
- Geographic information systems and information technology
- Topography, cartography and photogrammetry
- Education – Training centre for geomatics
- Desktop publishing and printing

The Institutes Mission



- To bring **inventive and applicable solutions** in the field of geomatics to Slovenian users - government, regions, communities, private sector and individuals.
- To offer those users the access to knowledge and applications at **competitive prices**.
- To **represent** Slovenian geomatics and geodesy abroad.

Facts about Slovenia

TERRITORY (sq. km)

Area	20273
Forest	9911
Grasslands	3584
Fields and Gardens	2512
Orchards	379
Vineyards	217

BORDERLENGTH (km)

Total (without coastline)	1334
Austria	330
Croatia	670
Italy	232
Hungary	102
Coastline	46,6

GEOGRAPHICAL COORDINATES

of the extreme points

	North latitude	East longitude
North	46°53'	16°14'
South	45°25'	15°10'
East	46°28'	16°36'
West	46°17'	13°23'
GEOSS	46°07'	14°49'

GEOSS – Geometrical Centre of the Republic of Slovenia

House Numbers	488802
Municipalities	192
Settlements	5997
Streets	9529
Cadastral Communes	2826
Owners	1027795
Parcels	5137573

“ The Period of TRANSITION “



- **1991**

New Constitution

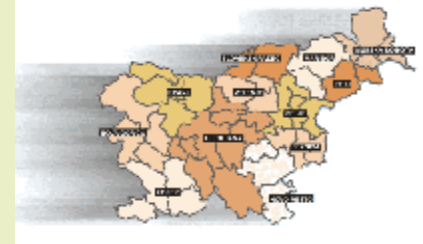
Parliamentary Republic

Change of economic system

New needs

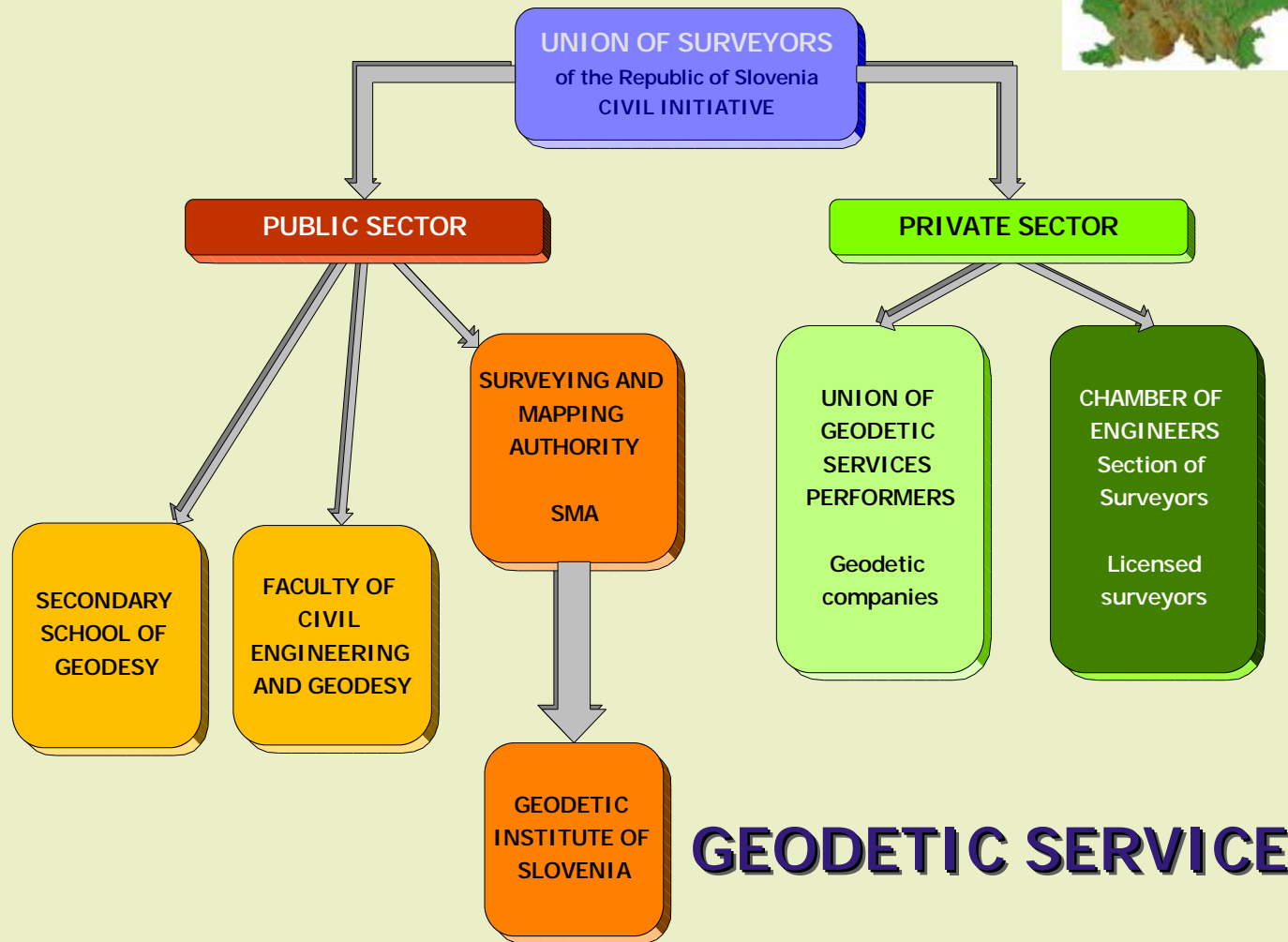
Reorganisation processes

Step by Step Approach (Transition = Process)

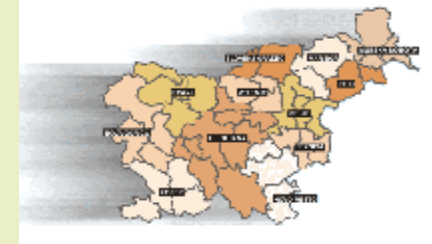


- Digitalisation of data collections
- Private initiative
- Cooperation with data users and holders
- Common approach to real estate registration policy
- Legislation renewal

Present Organisation



Performance of Geodetic Works



- **private sector:**
 - 134 geodetic companies are licensed to perform geodetic services
- **public sector:**
 - Surveying and Mapping Authority of the Republic of Slovenia with 565 full-time employees
 - Surveying and Mapping Institute of the Republic of Slovenia with 39 full-time employees
 - Faculty of Civil and Geodetic Engineering - Department of Geodesy with 30 full-time employees
 - Secondary School of Construction, Geodesy and Economics, Department of Geodesy with 6 full-time employee

Real Estate Registration Modernization

(28,9 milion \$, period 1999-2005)



PROJECT IDENTITY CARD (1)

5 responsible agencies:

- **Surveying and Mapping Authority of the Republic of Slovenia**
- **Supreme Court of the Republic of Slovenia**
- **Ministry of Agriculture, Forestry and Food**
- **Ministry of Finance**
- **Ministry of Justice**

REAL ESTATE
REGISTRATION
MODERNIZATION
PROJECT

Real Estate Registration Modernization



PROJECT IDENTITY CARD (2)

8 subprojects:

- Ü Land and building cadastre
- Ü Land register
- Ü Apartment registration development
- Ü Agriculture land use monitoring
- Ü Real estate tax and valuation system development
- Ü Housing finance and mortgage reform
- Ü Legal framework for property ownership
- Ü Project coordination support and strategic studies

REAL ESTATE
REGISTRATION
MODERNIZATION
PROJECT

● Slovenia



SMA employees:

	SMA (Head office)	MCO
1992	<u>24</u>	<u>524</u>
1994	<u>34</u>	<u>555</u>
1995	<u>596</u>	
2000	<u>578</u>	
2002	<u>570</u>	

● **Slovenia**



SMA employees education level:

Ø 39 % secondary

Ø 17 % college

Ø 37 % university or postgraduate

Head office:

Ø 15 % secondary

Ø 12 % college

Ø 72 % university or postgraduate

● Slovenia



Private sector employees:

	companies	experts
1995	93	237
1996	120	242
2000	161	379
2002	172	385

Estimation:

*less than 120 of 237 performers by the end of the year
1995 were **ex administration employees** !*

● **Slovenia**



- Ø **Transfer of technical works in connection with geodetic services to a private sector increases rationality, efficiency and quality of service for users !**
- Ø **Prices practically unchanged !**
- Ø **Competition between sectors seems to have positive consequences !**

National geodetic data – today

- Data sets practically prepared, digitalisation finished, maintenance quite optimized, overplus capacities on horizon, needs for expert profile changes becoming urgent ...
- Reorganisation ...

Transition = Process !

● **Conclusions**



- Ø **Transition is a process !**
- Ø **Development of land market is crucial for the economy growth !**
- Ø **Competition between sectors is positive !**
- Ø **Expert profile changes needed !**

● **Conclusions (post conflict areas)**

- Ø **Economic vision for the region development !**
- Ø **Short term and long term solutions (transition) !**
- Ø **Capacity building on all levels (public and privat sector) !**
- Ø **Doubt in administration is traditional !**
- Ø **Privat sector – the intermediate factor !**
- Ø **International suport – also shield in front corruption and and organized crime – that sirious threat !**