



BID BOOK



CONTENT



WHY HOST ?

Member Association
Supporting organizations
Events organized in the past
Organizing Committee
Suggested theme & dates & fees
Budget



HOST COUNTRY

Poland, Warsaw
Accessibility, safety & security, visas
Venue: EXPO XXI
Alternative venue: Double Tree
Letters of support
LOT Conventions



SOCIAL PROGRAMME

Technical tours
Tours & sightseeings
Social events
Accommodation
Symposium Cracoviense -DMC Support

REASON FOR HOSTING

The organization of a unique geodetic event in Poland, namely FIG Working Week 2024 will allow the exchange of experience, for the first time in this part of Europe, in a country of Copernicus, who stopped the Sun and moved the Earth. Poland's convenient location in the center of Europe makes our country an ideal place for investments that have customers on markets in both Western and Eastern Europe.

OBJECTIVES AND OUTCOMES

We are proud of solutions that facilitate the work of surveyors and allow an easy access to geospatial information. We have a geoportal that enables to browse and search spatial data sets and spatial data services made available in accordance with the INSPIRE directive.

Over the past 15 years, Poland has been working to create a modern Data Base of Topographic Objects. Recently a full coverage of country by data corresponding to the details and accuracy of the classical topographic maps at a scale of 1:10 000 has been obtained. This database is a reference for a different spatial information systems as well as for the development of topographic maps in the full range of scale (from 1:10 000 to 1: 250 000).

Preparations for the development of the topographic resources in 3D format are already underway. A highly accurate digital terrain model (Digital Terrain Model) was also developed on the basis of aerial photographs.

Poland has also a full coverage of the current data obtained through the process of airborne laser scanning (ALS), which, among other things, is used in the flood protection system of our country.



REASON FOR HOSTING

The whole area of our country is covered with a uniform numerical fundamental map, the content of which is probably the most rich in detail compared with other types of such maps in the world. Situational details, land forms, networks of ground utilities, geodetic and cadastral data can be found on one map, in the various thematic layers.

We would like to share our experience in the construction of a uniform cadastre for the whole country, taking into account the difficult historical background of various parts of the country. Works on the creation of the Integrated Information System about Real Properties are now continued. These are just some of the achievements in the creation of a modern infrastructure for spatial information in Poland.

It is worth noting that universities and research institutes run observatories and laboratories as a part of a national, European and global observation system, primarily in creation and maintenance of the reference systems and research infrastructure in the area of broadly defined geodynamics, gravimetry, metrology and meteorology. A permanent cooperation among others with EUREF (Regional Reference Frame Sub-Commission for Europe) and the IGS (International GNSS Service) has been realized since many years.

We would like to host the FIG Working Week in a country, where there probably is the biggest number of surveyors per capita. Polish surveyors have many years of experience in the work carried out in different parts of the world, from the 70s of the last century in Afghanistan, Algeria, Ethiopia, Cameroon, Tunisia, Libya, Egypt, Iraq, Kuwait, the United Arab Emirates, Senegal, Nigeria, Bahrain, Vietnam, Mongolia and many other countries.

For a few years remotely controlled platforms increasingly used for surveying have been the pride of Polish science and industry and our scientists and entrepreneurs constantly improve themselves in the construction of unmanned systems. We have large aircraft factories that belong to large corporations with many private companies alongside that are still small, but very fast developing. Unmanned systems have a chance to become a Polish area of expertise and showcase abroad.

REASON FOR HOSTING

Since the entry into the European Union, Poland has been recording an impressive economic growth. It was the only country in the European Union to have avoided a recession during the financial crisis. Poland is the largest country and economic leader in this part of Europe that connects the West with the East.

Poland has been successful in organizing great global events, both in the field of geodesy - "3rd International Cadastral Congress" organized in 2011 by the Association of Polish Surveyors with the participation of the International Federation of Surveyors - as well as in other spheres, for example: "UEFA EURO 2012", "2014 FIVB Volleyball Men's World Championship", "International Summit of the Member States of the Atlantic Alliance (NATO) between 8-9 July 2016 in Warsaw and the World Youth Days - an unprecedented event, which between 26-31 July 2016 gathered in Krakow more than 3 million people from 187 countries.

The organization of these events confirmed the good transportation facilities and confirmed that our country is able to provide full security.

As the organizers of the FIG Working Week 2024 we will be guided by the following objectives:

- ❑ Presentation of the achievements of Polish geodetic and cartographic heritage and achievements of other countries worldwide,
- ❑ Comparison of the solutions used in different countries in the field of modern technology, science and administration.

We are convinced that the FIG Working Week will be a fruitful global meeting of geodetic and cartographic community, which will have the following effects:

- ❑ Expanding recognition and potential of Polish geodesy and cartography
- ❑ Expanding international cooperation and finding optimal solutions in the field of modern technology, science and administration.

SHORT-TERM & LONG-TERM EFFECTS

By organizing the FIG Working Week 2024 we foresee to obtain the following short-term and long-term effects:

- ❑ The opportunity to exchange experiences in the field that covers all the subject area of all the FIG commissions.
- ❑ The opportunity to establish contacts between representatives of scientific institutions, government administration and professionals dealing with geodesy and real property as well as between all entities that are individuals, companies, etc.
- ❑ The opportunity to establish contacts between students under frames of the Young Surveyors group.
- ❑ The popularisation of knowledge in the field covering the subject area of all the FIG commissions worldwide as FIG is a global organisation.
- ❑ The promotion of FIG in Poland as well as the promotion of our local associations abroad.
- ❑ The promotion of academies, which will support the organisation of FIG – the presentation of scientific and educational offer (establishing cooperation, exchanging staff and students).
- ❑ The promotion of periodicals including 'Przegląd Geodezyjny', which will support the organization of the FIG (media partner) - strengthening of the journal by establishing contacts between foreign representatives of the editorial board and the Program Council. The potential interest of the international community in publishing in our journals, which in long term will allow a better evaluation of journals and indexing them in international databases.



INITIATIVES FOR SUSTAINABLE CONFERENCE ENVIRONMENT

Initiatives, which organizers plan to realize in respect of sustainable conference environment are based on the three mutually connected pillars: **KNOWLEDGE, EXPERIENCE, COMMUNITY.**

FIG Working Week is a great opportunity for presenting knowledge especially in the field of surveying techniques in a variety of applications. This know-how should be propagated to the widest possible circle, not limited only to the participants but also to the local communities of surveyors, which builds community promoting the brand and the idea of FIG industry associations.

While building community involved in the organization of FIG we wish to activate young inexperienced volunteers from universities studying geodesy, who will help to secure a wide access to information. It will also help in building experience, full and comprehensive service and spreading knowledge about the conference and accompanying events in the academic and local communities.

The organizers pledge to hold the conference with the maximum reduction of environmental impact. Among the key initiatives which are planned we can find: the minimalization of the paper-based materials into favour of digital documentation transmitted for mobile devices. The organizers want to involve the mass media to create newsletters for the conference participants, also using the social media.

As it is in FIG Working Week tradition, organizers plan to hold exhibition including sponsors' participation as well as a variety of events accompanying the conference which is expected to expand the impact of the conference on the local community and to integrate participants with the place and culture of the region.

The organizers wish to point out that all kinds of wastes generated during the conference will be recycled. Because of its geographical location the city of Warsaw especially cares about the environment.

INITIATIVES FOR SUSTAINABLE CONFERENCE ENVIRONMENT

New initiatives or activities

The organizers propose some new initiatives and activities which include:

- ❑ Post-conference seminars to popularize the effects of a conference in the local environment – associated surveyors and non-members of societies – promotion of FIG activities.
- ❑ Promotion of FIG Working Week effects among students - sharing experience related to the work of surveyors presented during the conference.
- ❑ Post-conference publications in journals at regional and national level with regard to the translation of selected works that are to popularize the solutions worked out during the FIG Working Week.
- ❑ The organizers propose not only to reward the best of the publications, but also to help young scientists in appreciation of their work by awarding the young scientists.

WHAT LEGACY TO LEAVE LOCALLY FROM the FIG WORKING WEEK

The aforementioned initiatives are designed to leave a legacy that will remain in the country and region of the organizers of the FIG Working Week. The organizers particularly indicate the effects that will definitely affect the local sector and these are:

KNOWLEDGE:

- ❑ The exchange of knowledge between participants, among which quite a large number will be participants from Poland and Central and Eastern Europe.
- ❑ Post-conference publications in journals at regional and national level with regard to the translation of selected works that are to popularize the solutions worked out during the FIG Working Week.
- ❑ Post-conference seminars to popularize the effects of a conference in the local environment – associated surveyors and non-members of societies – promotion of FIG activities.

EXPERIENCE:

- ❑ Exchange of experience between participants
- ❑ Awards for young scientists and students for the best speech and poster allowing to gain experience on the international level for early-stage researchers
- ❑ Promotion of FIG Working Week effects among students - sharing experience related to the work of surveyors presented during the conference.

COMMUNITY:

- ❑ Active participation of pupils, students, academia, representatives of geodetic companies will enable broadening and strengthening of the community related to surveying, as well as it will enable, especially young people, to establish new contacts
- ❑ Increased awareness of the FIG brand, as well as of the associations cooperating with FIG
- ❑ Drawing the attention of local authorities to the role and work of the surveyor, which is essential and sometimes underestimated in various types of investment processes, through the organization of thematic exhibitions related to the industry
- ❑ Brand building of the region and culture of Mazowsze - the central region of Poland

A photograph of a surveying instrument on a tripod in a field, with a person in the background. The image is overlaid with a red diagonal shape that contains the title text.

EXPECTED NUMBER OF INTERNATIONAL & NATIONAL PARTICIPANTS

Estimated number of participants:
between 1200 – 1500 participants

General Assembly: 450 participants

Conference:
paying participants – international: 800-1100
paying participants – national: 200

Students: 150

Accompanying persons: 60

MEMBER ASSOCIATION

ASSOCIATION OF POLISH SURVEYORS (SGP)



Historical background

The first surveyor's organization was established at the Polish territory in 1916 under the name "The Union of Surveyors". At that time Poland did not exist on the map of Europe as an independent country, but the course of The 1st World War slackened occupation regimes so that it was possible to establish professional organization of Polish surveyors. Several regional surveyor's societies were set up. Since then Polish surveyor's association has been existing continually excluding the period of The 2nd World War. The name of association was transformed to the "Union of Polish Surveying Associations" (1925), "Union of Licensed Surveyors" (1926), "Surveyor's Union of Republic of Poland" (1945) and Association of Polish Surveyors", SGP (1953).

Professional Organization of Polish Surveyors joined International Federation of Surveyors (FIG) in 1926. Polish surveyors hosted the FIG Permanent Committee Meetings three times: in 1932 in Warsaw, in 1959 in Kraków and in 1985 in Katowice. Association of Polish Surveyors organized under FIG frames "The 1st International Cadastral Congress" in 1998 in Warsaw. Polish colleagues chaired FIG Technical Commissions (Commission 2, 6, 7, 8). Association of Polish Surveyors is a member of International Society of Photogrammetry and Remote Sensing as the Polish Society of Photogrammetry and Remote Sensing acts as a scientific Section of the SGP. Polish Society of Photogrammetry joined the International Society of Photogrammetry in 1930.

Organization

Association of Polish Surveyors SGP acts as a voluntary organization of individuals being professional surveyors due to the diploma certifying education in land surveying. Legal basis of SGP results from Polish Parliament Law on Associations. SGP has its own "Statute" and "Code of Ethics". SGP has regional branches coinciding generally with provinces of the country. SGP Convention takes place every three years. Convention gathers ca 100 delegates elected proportionally in regional SGP branches. Convention's duty is to elect SGP President, SGP Head Board, Auditor's Commission and Disciplinary Commission. Convention resolves SGP organizational and professional policy for the three-year term of office of elected bodies. The Head Board of SGP meets at least three times a year. Head Board elects Executive Board of 5 persons (three Vice-Presidents, Treasurer and Secretary General). Executive Board meets if necessary, usually every two weeks. SGP President acts as a chairperson of the Head Board and Executive Board. Association's activities are organized by the Technical Commissions and Technical Sections.

MEMBER ASSOCIATION

ASSOCIATION OF POLISH SURVEYORS (SGP)



Activities

SGP activities concern the following three fields: professional, scientific and social.

SGP professional activities comprise mainly the following items:

- Running the procedure of recognition the professional qualification of surveyors and licensing
- Professional qualification is certified by Association's degree of professional specialization for individuals and Association's recommendation for surveying companies
- License in surveying is granted by the Surveyor General according to the qualification and examination procedure; SGP organizes the proper training courses and SGP's representatives are nominated by Surveyor General as members of the Examination Commission for licensing
- Consulting the legal acts when they concern the field of broadly understood surveying (law on surveying, cadastre, LIS/GIS, construction etc.)
- Organizing professional contests concerning the quality of surveying projects, e.g.: contest of quality of the land consolidation projects
- Running Association's self-help system aimed at financial subsidies granted for those who find themselves in difficult living conditions

SGP scientific activities are focused on organization of symposia and technical conferences:

- Three domestic conferences or symposia are organized yearly (on an average); each gathers ca 200 participants (with singular international participation),
- Organization/co-organization of the Polish-Czech-Slovak "International Geodetic Days" - every year in one of the countries
- Symposia co-organized with the Committee for Geodesy, Polish Academy of Sciences
- Local workshops and trainings.

SGP social actions comprise sports and leisure functions:

- Surveyors' championships in the following disciplines: tennis, bridge, chess, down-hill-skiing, sailing and tramping.
- Club-meetings
- Surveyors' carnival-balls etc.



SUPPORTING ORGANIZATION

The Head Office of Geodesy and Cartography is an office operating under the direct patronage of the Surveyor General of Poland. The Surveyor General of Poland performs tasks specified in the Surveying and Cartographic Act, particularly:

- ❑ Supervising realisation of the state policy in the scope of land surveying and cartography.
- ❑ Playing a function of a higher level body, as understood pursuant to the Code of administrative conduct in relation to voivodeship inspectorates of land surveying and cartographic supervision, and supervises and controls their actions.
- ❑ Maintaining the national surveying and cartographic centre, and allocating funds from the Surveying and Cartographic Centre Fund.
- ❑ Maintaining records in the systems of information on lands with general state importance, and cooperating with other resorts in establishment and management of the geographic information systems.
- ❑ Cooperating with international and regional organisations as well as bodies and offices of other countries, specialised in the area of land surveying and cartography.
- ❑ Initiating scientific and R&D works in the scope of organisational and technical standards, as well as application of IT, photogrammetric and satellite solutions in the field of land surveying and cartography, and within the state land information system.
- ❑ Granting professional qualifications in the area of land surveying and cartography, keeping the register of qualified persons, and cooperating with local governments and professional organisations associating land surveyors and cartographers.
- ❑ Implementing tasks in the scope of defence matters, crisis management and protection of confidential information pertaining to land surveying and cartographic activity, ensuring that the legal provisions related to personal details protection are followed, and monitoring operation of the data security management system.
- ❑ Developing guidelines related to common taxation of real property, and supervising the procedure.
- ❑ Developing principles regarding agreements on location of the designed infrastructural network systems.
- ❑ Creating and maintaining the geoportal of spatial information, as the central access point for services (such as searching, reviewing, downloading, transforming) within a full thematic and territorial range of infrastructure.
- ❑ Keeping publicly available records of spatial data collections and services covered by the infrastructure, and providing them with uniform identification
- ❑ Being responsible for contacts with the European Commission, in relation to cases specified in the Spatial Information Infrastructure Act.

SUPPORTING ORGANIZATIONS - OTHERS



Polish Federation of Engineering Associations



Polish Society for Photogrammetry and Remote Sensing.



Geodezyjna Izba Gospodarcza
od 1994 roku

Geodetic Chamber of Commerce



Polska Geodezja Komercyjna
Krajowy Związek Pracodawców Firm Geodezyjno-Kartograficznych

National Union of Employers of Geodesy and Cartographic Companies



Polish Association for Spatial Information



Warsaw University of Technology
Faculty of Geodesy and Cartography



University of Warmia Mazury in Olsztyn
Faculty of Geodesy, Geospatial and Civil Engineering



WGGiŚ

AGH University of Science and Technology
Faculty of Mining Surveying and Environmental Engineering



Miesięcznik Naukowo-Techniczny Stowarzyszenia Geodetów Polskich

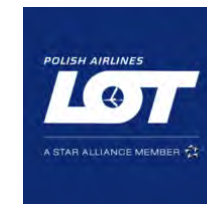
— Local journal of geodesy science. —
The owner is Association of Polish Surveyors



Ministry of Foreign Affairs
Republic of Poland



POLISH TOURIST ORGANISATION



EVENTS ORGANIZED IN THE PAST



KONGRES KATASTRALNY
17-20 listopad 1998 r., Warszawa, Polska
Trzeci Cyrkularz



2nd CADASTRAL CONGRESS
18 - 21 September 2003, Cracow, Poland

FIG meetings in Poland:

- ❑ 6th FIG Permanent Committee Meeting 1932
2 - 3 Sep. 1932, Warsaw, Poland
- ❑ 26th FIG Permanent Committee Meeting 1959
4 - 7 Sep. 1959, Krakow, Poland
- ❑ 52nd FIG Permanent Committee Meeting 1985
9 - 16 June 1985, Katowice, Poland

Cadastral congresses in Poland:

- ❑ 1st International Cadastral Congress, 17-20 Nov. 1998, Warsaw, Poland
- ❑ 2nd International Cadastral Congress, 19-21 Dec. 2003, Cracow, Poland
„Reliable cadastre in the service of citizens and institutions”
- ❑ 3rd International Cadastral Congress, 23-25 Nov. 2011, Warsaw, Poland
„Cadastre in sustainable spatial management”



The International Polish-Czech-Slovak Geodetic Days

The aim of the International Polish-Czech-Slovak Geodetic Days is to integrate professional and cultural surveyors from neighboring countries. Surveying days are held every year in a different country. First *Geodetic Days* took place in Zilina in Slovakia on 16-19.05.1995.

XXIII the International Polish-Czech-Slovak Geodetic Days were organized in Poland (Warsaw, 18-20 May 2017).

This meeting is organized by professional associations of neighboring Slavic countries: Association of Polish Surveyors (SGP), Český Svaz Geodetů a Kartografů (CSGK) and Slovenská spoločnosť Geodetov a Kartografov (SSGK).

Between 2015 and 2019 the Association of Polish Surveyors organised 47 local events including conferences, seminars and competitions.

EVENTS ORGANIZED IN THE PAST

Selected conferences, seminars,
competitions organised by the
Association of Polish Surveyors
in the period 2013-2016:

- ❑ The central stage of the 37th Contest of the Geodetic and Cartographic Knowledge, Bydgoszcz, 9-11 April, 2015.
- ❑ 8th Polish Geoinformation Symposium on "Modern Geoinformation Technologies in Spatial Modelling", Warszawa Serock, 17-18 September, 2015.
- ❑ 12th Research and Technological Conference on the Current Issues of Engineering Geodesy, Warszawa Serock, 22-23 October, 2015.
- ❑ The central stage of the 38th Contest of the Geodetic and Cartographic Knowledge in the academic year 2015/2016, Opole, 31 March - 2 April, 2016.
- ❑ 13th Podlasie GIS Forum, Białystok, 23 - 25 June, 2016.
- ❑ 19th Kalisz Research and Technological conference on: "Modernisation of the cadastre, computerisation of the National Geodetic and Cartographic Resources, data interoperability with respect to creation of the Real Estate Integrated Information System and utilisation of the EU funds and funds from Regional Development Programmes in the period 2016-2020", Kalisz, 15 - 16 September, 2016.
- ❑ 20th National Photogrammetric Symposium "Photogrammetry for Geoinformation", Wrocław, 19 - 21 September, 2016.
- ❑ 11th Technological Conference on coordination of locating designed technical infrastructure networks, Legnica, 20 - 21 October, 2016.

- ❑ XXIII International Polish-Czech-Slovak Days in Warsaw, May 18-20, 2017,
- ❑ XIII Scientific-Technical Conference the "Current Problems in Engineering Geodesy" Warsaw, March 29-31, 2017
- ❑ the 21st Scientific and Technical Conference from the "Real Estate Cadastre" series on the subject: "BORDERS IN THE REAL ESTATE", under the auspices of Waldemar Izdebski Chief Land Surveyor, September 20-21, 2018,
- ❑ XXI National Photogrammetric Scientific Symposium "Current challenges of photogrammetry, remote sensing and geoinformatics", Koszalin-Mielno, September 19-21, 2018
- ❑ the 13th edition of the National Conference of the Club of Geodesy Students, May 10-11, 2018
- ❑ the 100th anniversary of the Association of Polish Surveyors, Warsaw, January 25, 2019
- ❑ the XLIII National Competition for the Quality of Combination Works, November 28-29, 2019

ORGANIZING COMMITTEE

Prof. Janusz Walo
President of Association of Polish Surveyors

Ludmiła Pietrzak, PhD
Vicepresident of Association of Polish Surveyors

Krzysztof Bakula, PhD
Vicepresident of Association of Polish Surveyors

Alicja Kulka, MSc
Deputy Chief Land Surveyor

Ewa Surma, MSc
Head Office of Geodesy and Cartography

Marcin Karabin, PhD

Paweł Hanus, PhD

Prof. Andrzej Pachuta

Tomasz Lipecki, PhD

Małgorzata Buśko, PhD

Dominik Próchniewicz, PhD

Barbara Kosińska, MSc

General Secretary of Association of Polish Surveyors

SUGGESTED THEME

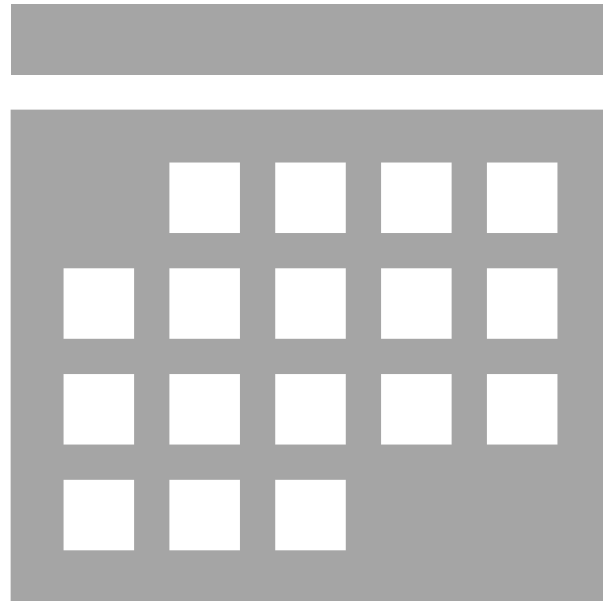
„Towards
excellence
in measurements”

PROPOSED DATES

April 20-26, 2024
alternative: April 19-25, 2024

May 18-24, 2024
alternative: May 17-23, 2024

May 25 – 31, 2024
alternative: May 24-30, 2024



SUGGESTED FEES

REGISTRATION TOURS SOCIAL EVENTS

Early full fee	€ 650,00
Early student fee	€ 450,00
Late full fee	€ 750,00
Late student fee	€ 500,00
Accompanying person	€ 150,00
Sightseeings & tours	€ 60,00
Technical tours	€ 60,00
Foundation Dinner	€ 95,00
Gala Dinner	€ 110,00

BUDGET

FIG

Working Week

2024

VENUE / NO OF PARTICIPANTS	EXPO XXI 1200 persons	Double T. 1200 persons
EXPENDITURE		
Marketing/Promotion	€ 3 000,00	€ 3 000,00
Venue	€ 237 070,00	€ 94 981,40
Technical Support	€ 123 885,48	€ 65 463,48
Catering	€ 128 534,88	€ 179 744,19
Exhibition	€ 5 581,40	€ 5 581,40
Staffing	€ 9 069,77	€ 9 069,77
Participant's KIT	€ 20 790,70	€ 20 790,70
Decorations	€ 5 813,95	€ 5 813,95
Opening Ceremony	€ 3 488,37	€ 3 488,37
Hosted Welcome Reception	€ 12 558,14	€ 12 558,14
Social events	€ 138 372,09	€ 138 372,09
Technical tours	€ 10 465,12	€ 10 465,12
Accompanying persons + tours	€ 6 976,74	€ 6 976,74
Site visits/Travel/ Accommodation	€ 7 325,58	€ 7 325,58
Conference management - DMC fee	€ 46 511,63	€ 46 511,63
FIG Foundation fee	€ 19 200,00	€ 19 200,00
FIG Registration Handling fee	€ 48 000,00	€ 48 000,00
TOTAL EXPENDITURE	€ 826 643,85	€ 677 342,55
INCOME		
Participants	€ 556 097,56	€ 556 097,56
Social events	€ 151 150,00	€ 151 150,00
Sponsor/Exhibition Income	€ 172 500,00	€ 172 500,00
TOTAL INCOME	€ 879 747,56	€ 879 747,56
SUMMARY		
Total income	€ 879 747,56	€ 879 747,56
Total expenditure	€ 826 643,85	€ 677 342,55
RESULT	€ 53 103,71	€ 202 405,01

HOST COUNTRY

Poland – situated in „the heart of Europe”, is a country of rich history and cultural heritage, beautiful nature with Europe’s oldest primeval forest and exciting atmosphere of the present day.

The most recognizable Polish great personalities are: Pope John Paul II, Lech Walesa, Maria Skłodowska-Curie, Fryderyk Chopin, Nicolaus Copernicus. Access to Poland is easy and relatively inexpensive.

There are a lot of reasons to visit Poland:

- Perspective country with rapidly growing economy
- Plentiful flying connections
- Safety. Poland is one of the safest countries in Europe
- High standard of services
- 100 % Polish Hospitality
- Stable currency course and affordable prices.... We guarantee, that in Poland you will be afforded not only for a cup of coffee!

Why should

POLAND

be your next destination ?

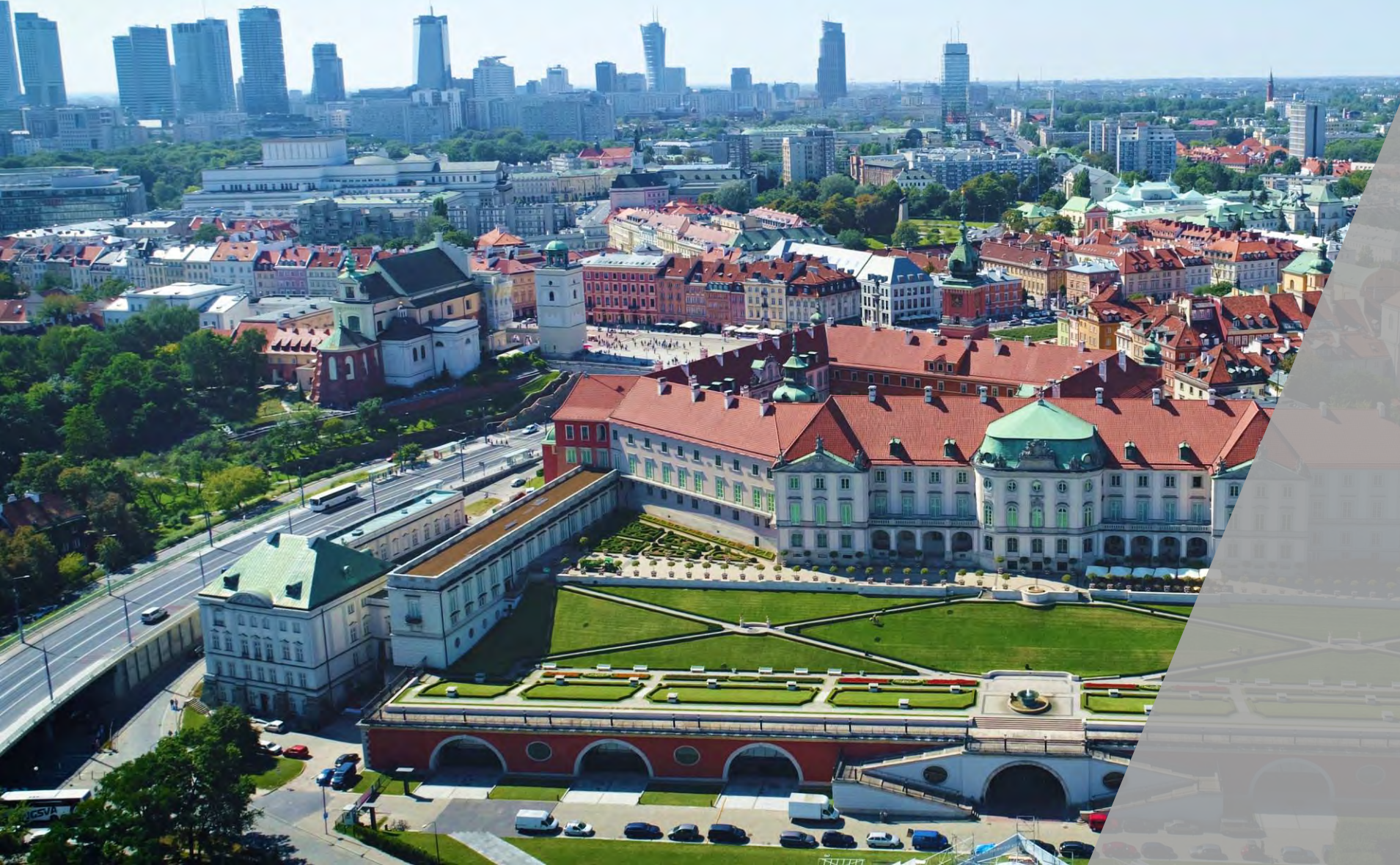
- ❑ Centrally located in Europe
- ❑ Safe – very low crime rate, no terrorism activity
- ❑ Business, scientific, political & cultural hub
- ❑ Compact – key hotels & venues in the city centre
- ❑ Best value for money in the region



WHY WARSAW ?

WARSAW

the beating heart of business



It's the perfect location not only for political and scientific conferences, but also for business and cultural events.

Behind the hustle and bustle of the business world, you can also feel the rhythm of city life. Try the varied delights of the city's many restaurants, take a stroll along the banks of Vistula or simply stroll around and discover the fascinating reality of life in a modern European city. Warsaw is a city just waiting to be explored.



During your stay in Warsaw, try to find a little time to visit some of the city's excellent museums and galleries. Stop by the Royal Castle, the Museum of Warsaw, or visit another former royal residence – **the Royal Łazienki Museum – located in the most beautiful park in the city.** If you haven't been before, take a trip to the Warsaw Rising Museum, dedicated to the heroism of Varsovians and the events of the final months of World War II. The POLIN Museum of the History of Polish Jews will introduce you to the 1,000-year-old history of Polish Jews.

Discover **WARSAW** museums



Fryderyk Chopin is known all around the world as one of the greatest composers and pianists of the 19th century. Warsaw is the city, where Fryderyk grew up and spent his formative years. The Fryderyk Chopin Museum at Warsaw's Ostrogski Palace is one of the most highly acclaimed modern biographical museums in Europe.

Every five years since 1927, Warsaw has been attracting the very best piano players in the world to participate in the Fryderyk Chopin International Piano Competition. Open-air concerts are held at the feet of the monument to Fryderyk Chopin every Sunday from May until September. Many concerts are organized in the prestigious venues in the city.

Chopin's **WARSAW**



WARSAW – green city

Warsaw is a green and refreshing destination with its 346 leafy squares and 96 parks covering a quarter of the city. The largest and most impressive of these is the Royal Łazienki Park and Palace complex covering 76 ha of parkland in the middle of the city and containing some beautiful architecture. There is also **the incredible green roof of the University Library**, one of the largest rooftop gardens in Europe, with a view looking out over the Vistula River and the “PGE Narodowy” Stadium.

WARSAW

Your meeting destination

PAST & FUTURE CONGRESSES

- ❑ European Conference on Power Electronics & Applications (EPE) 2017 – 880 pax
- ❑ International Conference on Jewish Genealogy (IAJGS) 2018 – 1000 pax
- ❑ World Congress on Controversies in Neurology (CONy) 2018 – 800 pax
- ❑ Conference of the European Psychoanalytical Federation (EPF) 2018 – 800 pax
- ❑ European Congress of Psychiatry (EPA) 2019 – 3200 pax
- ❑ European Congress of Clinical Neurophysiology (ECCN) 2019 – 1000 pax
- ❑ World Small Animal Veterinary Association Congress (WSAVA) 2020 – 3000 pax
- ❑ Information Security Forum's Annual World Congress 2020 – 1000 pax
- ❑ World Congress of Audiology (WCA) 2020 – 1100 pax
- ❑ International Numismatic Congress (INC) 2021 – 700 pax

Getting to WARSAW

By plane

Warsaw is a convenient location in terms of air travel and has direct flight connections to 192 cities.

2 international airports:

- ❑ Chopin Airport – main airport, about 10 km from the city centre.
- ❑ Warsaw Modlin Airport – located around 35 km north-west from the city centre

By train

Warsaw is also well connected to other European cities by rail. There are 3 train stations in Warsaw providing international and intercity train services. They are well connected to the public transportation network.

Getting around

- ❑ 3 main train stations connected to the public transportation network
- ❑ extensive **bus** and **trams** network
- ❑ 2 **metro** lines
- ❑ 1 ticket valid for all means of public transport
- ❑ urban **bikes** system





Warszawa
Summit | 8-9 VII 2016 | Sommet

SAFETY & SECURITY



- ❑ Member of EU & NATO
- ❑ Experienced in organizing large scale events: EURO 2012, Climate Change Conference COP-19 2013, NATO Summit 2016
- ❑ Ranked 22 out of 163 countries according to Global Peace Index
- ❑ No incident of safety related nature within the last 25 years
- ❑ 86 % of Varsovians feel safe after dark

Warsaw is one of the safest cities
in the world!

- ❑ **Language:** Polish



- ❑ **Time** Central European Time (CET), used in most parts of Europe and a few North African countries, is a standard time which is 1 hour ahead (UTC+01:00) of Coordinated Universal Time (UTC).
- ❑ **Credit Cards** Visa, Maestro, Mater Card and American Express are accepted in most shops, hotels and restaurants. You will find a cash dispenser on nearly every corner.

- ❑ **Electrical Appliances** The voltage in Poland is 220 volts. Plugs are European standard with two round pins.
- ❑ **The Climate** Typical of Warsaw and the surrounding area, the temperate transitional climate is characterised by frequent changes in weather, because over Poland the dry air masses from the Eurasian continent and the moist from the Atlantic clash. The average annual temperature in Warsaw is 8–9°C. The lowest temperatures on thermometers usually appear from mid-January to mid-February (average January temperature is -3°C). The warmest and most sunlit months of the year are July and August (average temperature in July is 18°C).
- ❑ **Currency** Polish zloty PLN (1€ aprox. 4,3 PLN)

USEFUL
INFORMATION

VISA

I want to travel to Poland,
which documents do i have to provide?



I am a citizen of a member state belonging to the Schengen Area or a citizen of a European Union member state outside the Schengen Area.

— a valid travel document (passport) or valid ID card



I am a citizen of a country outside the Schengen area, without the right to enter Poland under a visa-free regime.

— a valid travel document (passport) with a valid national visa (D) or Schengen visa (C)



I am a citizen of a country outside the Schengen Area, having the right to enter Poland as part of a visa-free journey based on a biometric passport.

— a valid biometric passport



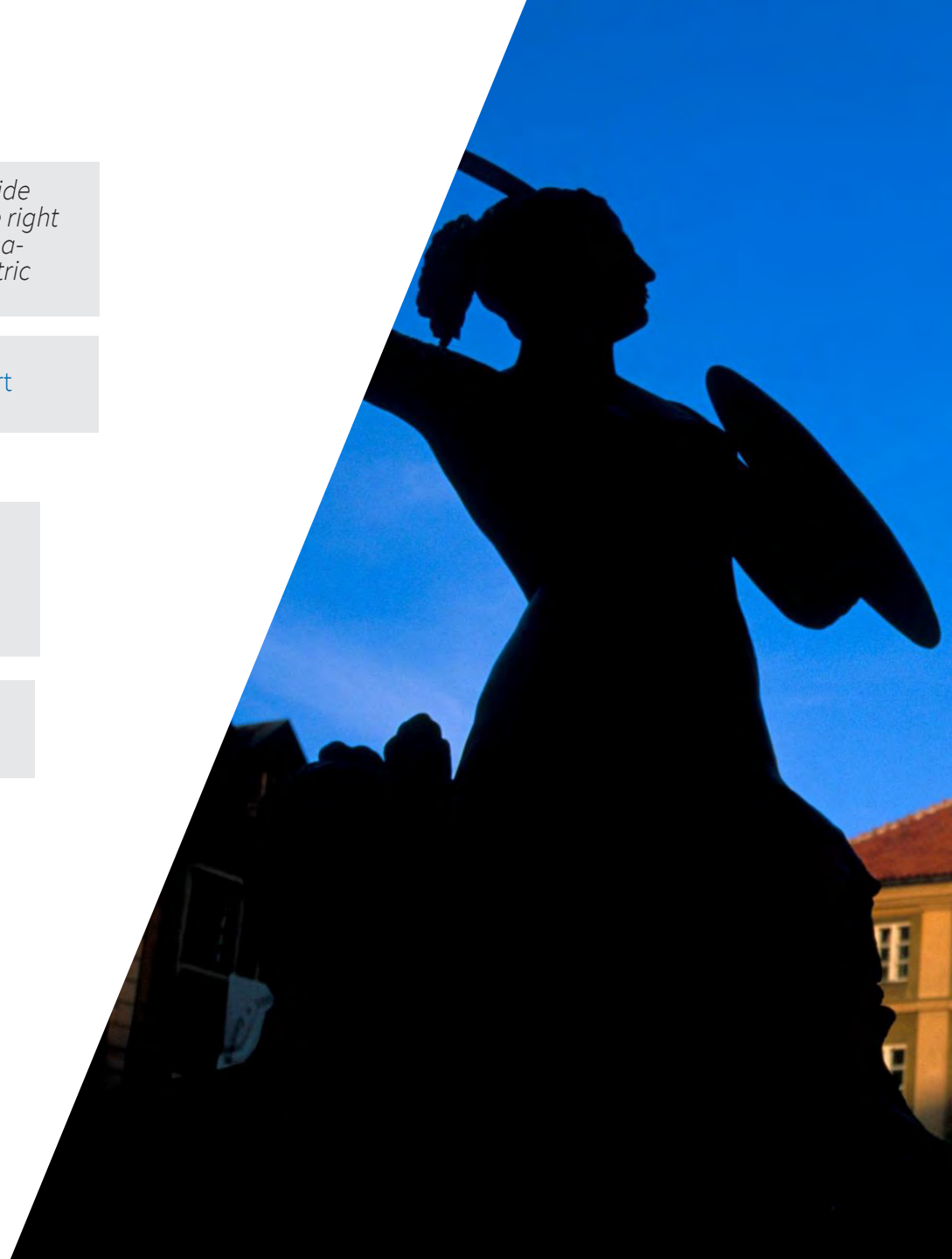
I am a citizen of a country outside the Schengen area, having the right to enter Poland as part of a visa-free journey.

— a valid travel document (passport)



I am a citizen of a country outside the Schengen Area and I am in possession of a residence permit issued by the Schengen Area.

— a valid travel document (passport) and a valid residency permit issued by a member state of the Schengen Area



VENUE



WARSZAWSKIE CENTRUM
EXPO XXI

- ❑ The leading fair venue in Warsaw experienced in international shows
- ❑ The biggest multi-functional space in central Poland
- ❑ 14 years experience on the market (over 200 events held each year).
- ❑ Only 10 minutes from the city centre and 20 minutes from the international airport
- ❑ High standard of delivered services
- ❑ Strategic location among worldwide hotel brands: 5 to 10 minutes drive to all 4 & 5 stars hotels

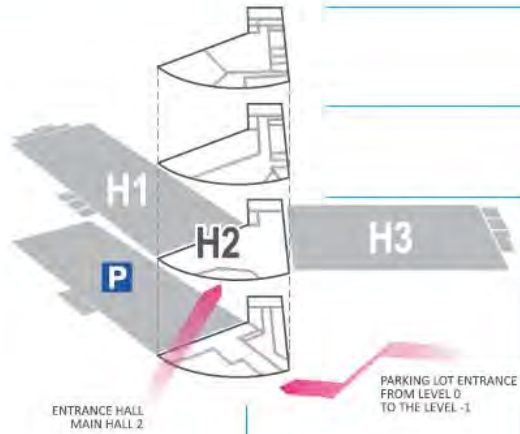


EXPO XXI



Floorplans

HALL 2



1 050 m²

HALL 1



5 250 m²

HALL 3



3 600 m²

HALL 4



3 600 m²



HALL 1



HALL 1 specification:

usable length - **125 m**

usable width - **42 m**

usable height - **8 m**

usable area - **5 250 m²**

total load-bearing capacity of the roof structure for hanging - **12 tons**

Upon permission in certain spots, up to **11 m** of the hall space height can be used.

Hall 1 has five spaced out cargo gates.

Gates dimensions:

width - **4,6 m**

height - **4,3 m**

HALL 2



HALL 2 specification:

usable height - **3,9 m**

usable area - **1 050 m²**

Automatic doors in the main entrance allow transportation of large objects.

Door dimensions:

width - **1,95 m**

height - **2,7 m**

HALL 3



HALL 3 specification:

usable length - **75 m**

usable width - **48 m**

usable height - **8 m**

usable area - **3 600 m²**

floor load capacity - **7 tons**

Upon permission, up to **11 m** of the hall space height can be used in certain spots.

The hall 3 has three evenly distributed gates.

Gates dimensions:

width - **4,6 m**

height - **4,3 m**

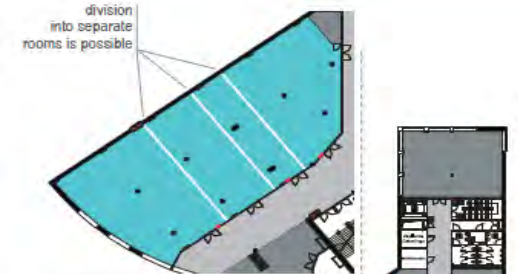
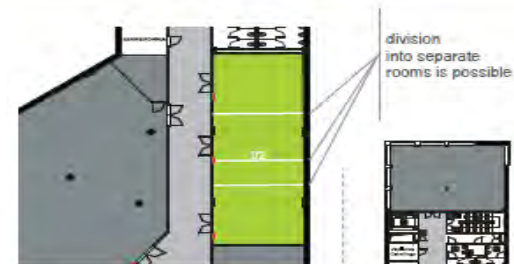
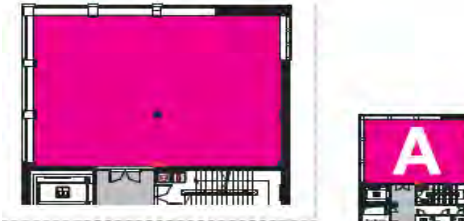
HALL 2 - 1st FLOOR



ROOM A

ROOM B

ROOM C



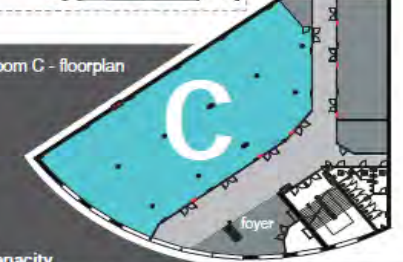
Room A - floorplan





Room B - floorplan



Room C - floorplan






Capacity
maximum number of occupants - 50 people

-  50 people / theater arrangement
-  50 people / class arrangement
-  40 people / U-shaped arrangement
-  50 people / reception arrangement

Capacity
maximum number of occupants - 120 people

-  120 people / theater arrangement
-  64 people / class arrangement
-  40 people / U-shaped arrangement
-  120 people / reception arrangement

Capacity
maximum number of occupants - 600 people

-  600 people / theater arrangement
-  250 people / class arrangement
-  150 people / U-shaped arrangement
-  600 people / reception arrangement

HALL 4



HALL 4 specification:

usable length - **93,5 m**
 usable width - **38,5 m**
 usable height - **10 m**
 usable area - **3 600 m²**
 floor load capacity - **45 tons**
 (1,5 to 13 tons per span)

Upon permission, up to **12 m** of the hall space height can be used in certain spots.

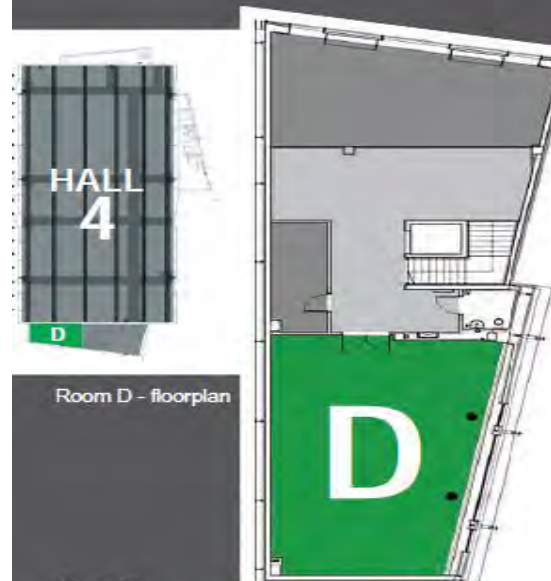
The Hall 4 has five cargo gates distributed along the hall.

Gates dimensions:

four gates:	fifth special gate:
width - 4,6 m	width - 4,6 m
height - 4,3 m	height - 5 m

HALL 4 - 1 st FLOOR

ROOM D



Room D - floorplan

Capacity
 maximum number of occupants - 50 people



50 people / theater arrangement



50 people / class arrangement



40 people / U-shaped arrangement



50 people / reception arrangement

ROOM E



Room E - floorplan

Capacity
 maximum number of occupants - 50 people



50 people / theater arrangement



50 people / class arrangement



40 people / U-shaped arrangement



50 people / reception arrangement



Flexible arrangements
of mobile walls in exhibition halls.
Please note, walls are not sound
proof.





ALTERNATIVE VENUE



DOUBLETREE

BY HILTON™

HOTEL & CONFERENCE CENTRE
WARSAW





DOUBLETREE

BY HILTON™

HOTEL & CONFERENCE CENTRE
WARSAW



- ☐ 20 conference rooms, and a grand 2000 m² ballroom
- ☐ Distance from the airport: 19 km
- ☐ Distance from the city centre: 12 km
- ☐ Total space: 5000 m² on 2 levels
- ☐ Number of hotel rooms: 359



DOUBLETREE
BY HILTON™

HOTEL & CONFERENCE CENTRE
WARSAW

LEVEL 0

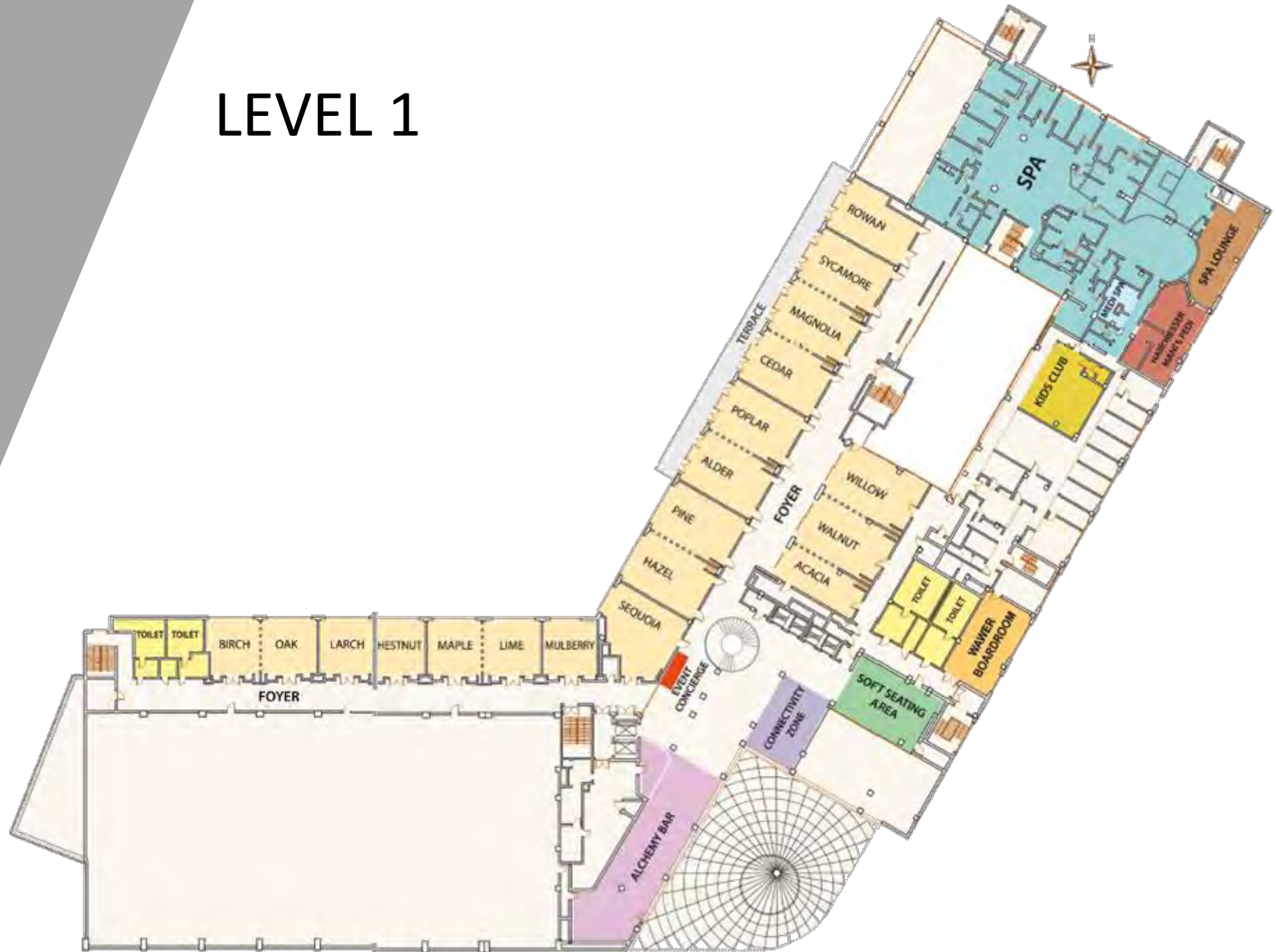


LEVEL 1

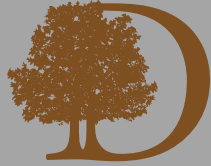


DOUBLETREE
BY HILTON™

HOTEL & CONFERENCE CENTRE
WARSAW









CONFERENCE ROOMS



DOUBLETREE
BY HILTON™

HOTEL & CONFERENCE CENTRE
WARSAW

Name	Area (m²)	Maximum number of persons	Number of seats					
								
Universe Ballroom	2,000	2,000		1,600	1,100	1,200	1,800	20
Total foyer	1,353	1,350					1,350	
Foyer Universe Ballroom	670							
Foyer + 1 right wing	385	380					380	
Foyer + 1 left wing	298	290					290	
Walnut / Willow	113	100	30	84	56	60	100	20
Boardroom Wawer	86	20						20
Magnolia / Sycamore / Poplar / Cedar / Alder / Pine / Hazel	77	66	22	66	30	50	50	20
Rowan	77	70	22	70	48	40	50	20
Sequoia	77	60	18	60	30	30	50	20
Acacia	70	60	28	42	28	30	60	20
Larch / Chestnut / Maple / Lime / Oak	56	44	18	44	28	40	40	20
Birch /Mulberry	56	44	16-18	40-44	28	20-40	36 -40	20



DOUBLETREE

BY HILTON™

HOTEL & CONFERENCE CENTRE
WARSAW





DOUBLETREE
BY HILTON™

HOTEL & CONFERENCE CENTRE
WARSAW



LETTERS OF SUPPORT

Dear President,
I was happy to find out that the Association of Polish Surveyors decided to bid for the FIG Congress. I express my strong support for this initiative and I am convinced that the Association of Polish Surveyors, like no other, deserves to be granted a right to host this special event in the world of geodesy.

The Association of Polish Surveyors is the oldest geodetic organization in Poland and one of the oldest in Europe. This year we celebrated its 100th anniversary. During these hundred years, the Association was an invaluable support for the surveyors in both the public and business sphere. As the Chief Country Surveyor, but also as a member of the Association of Polish Surveyors, I believe that Polish candidacy will be accepted by you.

Yours faithfully
dr hab. Eng. Waldemar Izdebski



RZECZPOSPOLITA POLSKA
Główny Geodeta Kraju

Warszawa, 4 grudnia 2019 r.

Pan
prof. dr Rudolf Staiger
President
International Federation of Surveyors

Szanowny Panie Prezesie,

z radością przyjąłem informację o podjętych przez Stowarzyszenie Geodetów Polskich staraniach w pozyskaniu prawa do organizacji światowego kongresu FIG.

Wyrażam swoje zdecydowane poparcie dla tej inicjatywy i jestem przekonany, że organizacja zrzeszająca polskich geodetów, jak żadna inna zasługuje na bycie gospodarzem tego specjalnego wydarzenia w świecie geodezji.

Stowarzyszenie Geodetów Polskich to najstarsza organizacja geodezyjna w Polsce i jedna z najstarszych w Europie. W tym roku obchodzono 100-lecie jej istnienia. Podczas tych stu lat Stowarzyszenie było nieocenionym wsparciem dla geodetów zarówno w sferze publicznej, jak i biznesowej. Aktywności organizacji pozwalają twierdzić, że organizacja spotkania przebiegnie sprawnie i profesjonalnie.

Jako Główny Geodeta Kraju, ale także jako członek Stowarzyszenia Geodetów Polskich wierzę, że polska kandydatura znajdzie uznanie i Państwa akceptację.

z wyrazami szacunku

GLÓWNY GEODETA KRAJU

dr hab. inż. Waldemar Izdebski



Republic of Poland
Minister
of Foreign Affairs
Jacek Czaputowicz

Warszawa, 10 December 2019

Prof. Dr Rudolf Staiger
President
FIG International Federation
of Surveyors

Dear Mr. President,

Let me take this opportunity to express my full support for the Association of Polish Surveyors and their efforts to host the Working Week of the International Federation of Surveyors in Warsaw, Poland, in 2024.

The Association of Polish Surveyors is the largest organization representing surveying practitioners of our country. Their contribution to the development of geodesy in the last 100 years has been truly remarkable.

The Association has been a member of the International Federation of Surveyors since 1926. Over the years Poland has organized FIG's General Assembly three times: in 1932 in Warsaw, in 1959 in Kraków and finally, in 1985 in Katowice. In 1998, under the auspices of the International Federation of Surveyors, the Association of Polish Surveyors organized the first World Cadastre Summit in Warsaw.

I believe that the professional experience and expertise as well as the achievements of the Association of Polish Surveyors, make it an excellent choice as the host of a successful and fruitful Working Week of the International Federation of Surveyors in 2024.

Yours sincerely,



UNIWERSYTET
WARMIŃSKO-MAZURSKI W OLSZTYNIE
WYDZIAŁ GEODEZJI
INŻYNIERII PRZESTRZENNEJ I BUDOWNICTWA

December 12, 2019

Prof. Dr Rudolf Staiger
President
FIG International Federation of Surveyors

Dear Mr. President,

I would like express our full support for the efforts of the Association of Polish Surveyors in organizing the Working Week of the International Federation of Surveyors in the year 2024 in Poland.

The Association of Polish Surveyors is the largest Polish organization representing surveying practitioners within our country, whose contribution to the development of geodesy in the last nearly 100 years has been significant.

The Polish surveyors' association has been a member of the International Federation of Surveyors since 1926. Since then, Poland has organized FIG's General Assembly three times: in 1932 in Warsaw, in 1959 in Kraków and lastly in 1985 in Katowice.

Furthermore, under the auspices of the International Federation of Surveyors, in 1998 the Association of Polish Surveyors organized the first World cadastre Summit in Warsaw.

Taking into consideration the experience and competencies of the Association of Polish Surveyors, in the case of choosing Warsaw as a venue for the Working Week of the International Federation of Surveyors in 2024, I am convinced that the event will be carried out efficiently and will be positively perceived by its participants. The choice of Warsaw as a venue will be a great honor for the whole Polish survey community.

We will be honored to host this prestigious event in our country.

Yours sincerely,
z upoważnienia Rektora
DZIEKAN
prof. dr hab. inż. Paweł Wiliński



WYDZIAŁ GEODEZJI INŻYNIERII PRZESTRZENNEJ I BUDOWNICTWA
UNIWERSYTET WARMIŃSKO-MAZURSKI W OLSZTYNIE
ul. Piłsuckiego 18, 15-720 Olsztyn
tel. (88) 523 46 04 e.gip@uwm.edu.pl
fax (88) 523 46 77 www.wydzial-geod.uwm.edu.pl



GEODEZYJNA IZBA GOSPODARCZA
00-043 Warszawa, ul. Czackiego 3/5
tel./fax /22/ 827-38-43, e-mail: biuro@gig.org.pl
Sąd Rejonowy dla m. st. Warszawy w Warszawie,
XII Wydział Gospodarczy Krajowego Rejestru Sądowego
KRS: 0000090356, NIP 525-20-34-024, REGON: 010753536

Warsaw, 28.11.2019

Prof. Dr **Rudolf Staiger**

President

FIG International Federation of Surveyors

Dear Prof. Staiger,

On behalf of the Chamber of Surveying Enterprises I am pleased to express our full support and interest in organizing the FIG Working Week & General Assembly of the International Federation of Surveyors in 2024 in Warsaw, Poland.

The Chamber of Surveying Enterprises is one of the larger non-governmental organizations associating of geodetic entrepreneurs in Poland. It was established in September 1994 on the initiative of 150 geodetic entrepreneurs to protect and represent its members. Today our task is to shape the principles of fair competition in the geodetic and cartographic industries as well as training and professional development of our members.

We are proud and delighted to provide our support of the organization of FIG Working Week & General Assembly of the International Federation of Surveyors in 2024 in Warsaw. We strongly believe that organizing this important meeting in Poland will create the opportunity to share knowledge and experience between practitioners, researchers, educators and scientists who are engaged in the field of geodesy.

Sincerely yours,

Krzysztof Lichonczak

President

Chamber of Surveying Enterprises



SLOVENSKÁ SPOLOČNOSŤ GEODETOV A KARTOGRAFOV
SLOVAK UNION OF SURVEYORS AND CARTOGRAPHERS
Kocelova 15
815 94 BRATISLAVA
SLOVAKIA
IČO: 17314453 DIČ: 2020635740

Bratislava, 12th December 2019

Dr hab. Eng. Janusz Walo, professor PW
President of the Association of Polish Surveyors

Dear Mr. Walo,

The Slovak Union of Surveyors and Cartographers supports the Association of Polish Surveyors efforts to gain the opportunity to organize the global FIG Working Week Congress in Warsaw in 2024.

In 2019, the Association of Polish Surveyors proudly celebrated the 100th Anniversary. Cooperation with International Federation of Surveyors (FIG) has started in 1926. Association of Polish Surveyors co-organized the meetings of the Permanent Committee of FIG in Warsaw in 1932, in Krakow in 1959 and in Katowice in 1985. Successful cooperation is also confirmed by the fact, that in 1938 at the FIG Congress in Roma, a Pole, dr. Władysław Surmacki, was elected the first Vice President of FIG.

We are convinced that the FIG Working Week will be a fruitful meeting of geodetic and cartographic community, which will have great positive effects, such as expanding recognition and potential of Polish geodesy and cartography as well as expanding international cooperation and finding optimal solutions in the field of modern technology, science and administration.

We strongly believe that organization of this important meeting in Poland will create the opportunity to share knowledge and experience among practitioners, researchers, educators and scientists.

Hoping for a positive decision in favour of Poland, sincerely

Dipl. Ing. Dušan Ferienc, EUR ING
President Slovak Union of Surveyors and Cartographers

**SLOVENSKÁ SPOLOČNOSŤ
GEODETOV A KARTOGRAFOV**
Kocelova 15, 815 94 Bratislava
IČO: 17314453 DIČ: 2020635740

VUB – Bratislava, a.s. – Ružinov
Dulovo nám. 1; Bratislava
BIC: SUBASKBX IBAN: SK18 0200 0000 0000 1213 3062

E-mail : ssgk@ssgk.sk



WROCLAW UNIVERSITY
OF ENVIRONMENTAL
AND LIFE SCIENCES

THE FACULTY OF ENVIRONMENTAL ENGINEERING AND GEODESY

Wrocław, 4th December 2019

Prof. Dr Rudolf Staiger
President
FIG International Federation of Surveyors

Dear Mr. President,

I would like to express our full support for the efforts of the Association of Polish Surveyors in organizing the Working Week of the International Federation of Surveyors in the year 2024 in Poland.

The Association of Polish Surveyors is the largest Polish organization representing surveying practitioners within our country, whose contribution to the development of geodesy in the last nearly 100 years has been significant.

The Polish surveyors' association has been a member of the International Federation of Surveyors since 1926. Since then, Poland has organized FIG's General Assembly three times: in 1932 in Warsaw, in 1959 in Kraków and lastly in 1985 in Katowice.

Furthermore, under the auspices of the International Federation of Surveyors, in 1998 the Association of Polish Surveyors organized the first World cadastre Summit in Warsaw.

Taking into consideration the experience and competencies of the Association of Polish Surveyors, in the case of choosing Warsaw as a venue for the Working Week of the International Federation of Surveyors in 2024, I am convinced that the event will be carried out efficiently and will be positively perceived by its participants. The choice of Warsaw as a venue will be a great honor for the whole Polish survey community.

We will be honored to host this prestigious event in our country.

Yours sincerely,

Prof. Bernard Kontny
Dean of the Faculty of Environmental Engineering and Geodesy



WROCLAW UNIVERSITY OF ENVIRONMENTAL AND LIFE SCIENCES
THE FACULTY OF ENVIRONMENTAL ENGINEERING AND GEODESY
ul. Grunwaldzka 55, 50-357 Wrocław
tel. +48 71 320 15 58 • fax +48 71 320 15 57
e-mail: dzialanie_wl@pwr.edu.pl • www.pwr.edu.pl



POLISH
TOURISM
ORGANISATION

Robert Andrzejczyk
President

Warsaw, 15.11.2019

Ms. Louise Friis-Hansen
Director
International Federation of Surveyors

on behalf of Polish Tourism Organisation and Poland Convention Bureau I wish to strongly support The International Federation of Surveyors and recommend Poland as a host of FIG Working Week & General Assembly of the International Federation of Surveyors in 2024.

I am deeply convinced that Poland, with its organization potential, committed authorities, comprehensive conference and congress infrastructure as well as high quality hotels and restaurants is a perfect place to host the FIG Working Week & General Assembly of the International Federation of Surveyors in 2024.

Poland Convention Bureau was created in 2002 as a department of Polish Tourism Organisation and is responsible for the promotion of Poland as an attractive destination for meetings and business events. By choosing to hold your conference in Poland you can be assured to receive all the professional attention and assistance you need to make your event successful and memorable for all your participants.

We truly hope to have the pleasure and privilege of hosting FIG Working Week & General Assembly of the International Federation of Surveyors in 2024.

Your sincerely,

6 Chalubińskiego Str., 00-613 Warszawa, Poland
T. +48 (22) 536 70 70, F. +48 22 536 70 04, e-mail: pot@pot.gov.pl
Branches of the Polish Tourist Organisation Abroad:
Amsterdam, Beijing, Berlin, Brussels, Kiev, London, Madrid, Moscow, New York, Paris, Rome, Stockholm, Tokyo, Vienna

websites: www.pot.gov.pl | www.poland.travel | www.poland-convention.pl | www.aktualnosci.wystyrcze.pl
www.stempolska.pl | www.pieknywzrost.pl | www.pwr-not.gov.pl | [www.zarabiamnaurysy\(ye\).pl](http://www.zarabiamnaurysy(ye).pl) | www.polskapoda@pwr.edu.pl



The Polish Society for Photogrammetry and Remote Sensing

Warsaw, 2 December, 2019

Professor Dr Rudolf Staiger
President
FIG International Federation of Surveyors

Dear Mr President,

The Polish Society for Photogrammetry and Remote Sensing, very strongly supports the Association of Polish Surveyors in their efforts to organize in Poland the Working Week of the International Federation of Surveyors in 2024 year.

The Association of Polish Surveyors, established in year 1919, has been a member of FIG since 1926. During 100 year existence of Association, Polish Surveyors have been involved in various international and national activities. The Association of Polish Surveyors, has organized three times FIG,s General Assembly, in Warsaw 1932, in Kraków 1959, and in Katowice 1985. The Association of Polish Surveyors, under the auspices of the International Federation of Surveyors has also organized in 1998, the first World Cadastre Summit.

The Polish Society for Photogrammetry and Remote Sensing (PSPRS), was established in year 1930, and from beginning, as a member of the International Photogrammetry Society, has been involved in their activity. Since many years, the Polish Society for Photogrammetry and Remote Sensing has been an Ordinary Member of the International Society for Photogrammetry and Remote Sensing. The PSPRS is a scientific section of the Association of Polish Surveyors. Therefore, many of PSPRS' international and national activities, have been very strongly supported by the Polish Surveyors Association. For example, their involvement and professional support had been in organization, with the PSPRS, of the 7th International Symposium on „Mobile Mapping Technology” in year 2011 in Cracow, under auspices of FIG, ISPRS, ION and IAG, which was attended by 150 participants from 30 countries. Also, the Association of Polish Surveyors has been involved in arrangements of many national symposiums, organized by the PSPRS, for every two years.

Considering the high professional competency of Polish Surveyors and their good organizational skills, the Polish Society for Photogrammetry and Remote Sensing, very strongly support their effort to arrange in Poland the Working Week of the International Federation of Surveyors in 2024 year. As a part of the Surveyors' society, we declare to support organization and participate in this event.

Yours sincerely,

Prof. Dr hab. Aleksandra Bujakiewicz
President of Polish Society for Photogrammetry
and Remote Sensing



UNIwersytet Rolniczy
im. Hugona Kołłątaja w Krakowie

Kraków, 2019-12-09

R0710/560/2019

Szanowny Pan:
dr hab. inż. Janusz Walo, prof. PW
Prezes Stowarzyszenia Geodetów Polskich

W odpowiedzi na Pańskie pismo z dnia 15 listopada 2019 roku (znak Idz. ZG/171/2019) dotyczące wsparcia starań o możliwość organizacji światowego kongresu FIG Working Week w Warszawie w 2024 roku, informuję, że w pełni wspieram Pańską inicjatywę. Przedsięwzięcia tej rangi stanowią najlepszą platformę do wymiany poglądów i doświadczeń, zaś wybór Warszawy będzie okazją do zaprezentowania naszych osiągnięć szerościemu gremium naukowców z całego świata. W tym też aspekcie organizacja tego zamierzenia w Polsce przyczyni się również do promocji naszego kraju na arenie międzynarodowej.

Z informacji uzyskanych od władz Wydziału Inżynierii Środowiska i Geodezji naszego Uniwersytetu wiem, że wsparcia dla tego pomysłu udziela także środowisko naukowe geodetów tej jednostki.

W powierzeniu:
REKTOR
UNIwersytetu Rolniczego

prof. dr hab. inż. Włodzisław Sady

Warsaw, 11.12.2019

Ms. Louise Friis Hansen
Manager

International Federation of Surveyors
Kalvebod Brygge 31
33, DK 1780
Copenhagen V, Denmark

Letter of support

Dear Madame,

On behalf of Warsaw Tourism Organization and its key department Warsaw Convention Bureau we would like to express our full interest and support for acquiring the FIG Working Week to the capital city of Poland, Warsaw in 2024.

Warsaw Tourism Organization – Warsaw Convention Bureau, as a public-private organization established and partially managed by the city authorities, is responsible for the development of the local meetings industry. Due to the fact that the conferences and events are complex yet supportive tools for different organizations, associations and corporate entities to achieve their goals, we see ourselves as an organization that contributes to the overall development of our local community: not only economic but also scientific, cultural and social. That is the reason why Warsaw Tourism Organization – Warsaw Convention Bureau had decided to support the idea of hosting the FIG Working Week in 2024.

We would like to officially confirm that our organization is fully committed to the success of this congress and that it will be available throughout all of its planning and execution, if the International Federation of Surveyors (FIG) decides to host the congress in Warsaw. We feel confident that you will find Warsaw an attractive, inspiring, professional and trustworthy destination for your main annual event.

In order to create a competitive destination offer we propose Warsaw CvB subvention package. Please find attached our tailor-made support offer for FIG Working Week 2024 in Warsaw.

Barbara Tutak
President of the Board
Warsaw Tourism Organization

Attachments:

- Warsaw Convention Bureau scope of support for the FIG Working Week 2024 in Warsaw

We trust the following support will help you in making the conference a success and we are looking forward to welcoming FIG Working Week 2024 in Warsaw.

WARSAW CONVENTION BUREAU SCOPE OF SUPPORT FOR FIG Working Week 2024 in Warsaw	
Support	Description
Support in the process of obtaining discounted or complimentary tickets for public transport	Warsaw Convention Bureau is applying for the City's support with securing discounted or complimentary public transport tickets for the FIG Working Week participants
Warsaw sightseeing for (up to 50 pax) VIP guests	Free of charge sightseeing tour for key participants of the FIG Working Week (usually 3-hours sightseeing with a guide, transfers and additional attractions).
Site inspection	Support with organising site inspection to familiarize with the city offer during the destination pitch (accommodation, limited meals, city tour, assistance with meetings with local suppliers of products and services, transfers.)
Sponsorship of the key speaker of the event	Securing stay of the key speaker of the event (accommodation, sightseeing, dinner), possible partial refund of travel to Warsaw. Sponsorship package includes financing of services up to 500 EUR.
Welcome desk at the Warsaw Chopin Airport	Securing the welcome stand for the participants at the airport along with English-speaking staff and information materials (usually 1-2 days).
Warsaw Convention Bureau promotional stand	Securing the stand with tourism information (English-speaking staff, printed materials, possible sales of trips and promotional gadgets).
Securing a mobile Chopin bench for the duration of the event as a promotional element of Warsaw to make the event more attractive.	Mobile Chopin bench – multimedia bench allowing to learn more about Chopin's music. Press a button and listen to a piece by Chopin.
Warsaw tourism information packages for the event participants	Securing packages of materials for the FIG Working Week participants (brochures, maps, etc.).
Promotional materials on Warsaw	Providing a rich database of photos, movies and promotional descriptions about the city.

Barbara Tutak
President of the Board
Warsaw Tourism Organization

Esri Polska Sp. z o.o.

Warszawa, 12 grudnia 2019 roku

Prof. Dr Rudolf Staiger

President

FIG International Federation of Surveyors

On behalf of the Esri Polska and myself, I would like to express a full support and interest in organizing the FIG Working Week & General Assembly of the International Federation of Surveyors in 2024 in Warsaw, Poland.

The Association of Polish Surveyors is the largest Polish organization representing surveying practitioners within our country, whose contribution to the development of geodesy in the last nearly 100 years has been significant.

The Polish surveyors' association has been a member of the International Federation of Surveyors since 1926.

Taking into consideration the experience and competencies of the Association of Polish Surveyors, in the case of choosing Warsaw as a venue for the Working Week of the International Federation of Surveyors in 2024 will be a great honor for the whole Polish survey community.

We will be honored to host this prestigious event in our country.

Sincerely yours,



Warsaw, 12th of December, 2019

Michal Fijol
Chief Commercial Officer
Board Member

To the Organizing Committee
of FIG Working Week Congress in Warsaw

Letter of support

Dear Sir,

I am delighted to express our support for the efforts of the Association of Polish Surveyors to organize FIG Working Week Congress in 2024 in Warsaw, Poland.

Each year Poland is hosting a growing number of business meetings. The industry is expanding rapidly. According to the International Conference & Congress Association reports Poland ranks among the 20 countries most frequently chosen to organize and host international meetings of associations. Our main hub – Warsaw, was ranked worldwide among the top 30 host cities for congresses. I am convinced that organizing FIG Working Week in the capital will be a great opportunity to present Warsaw as a modern and attractive destination to host international events, exchange professional knowledge and discuss new business opportunities. Moreover hosting the Congress will help local research community and academic circles to develop and succeed at international level.

I am convinced that the Congress delegates will benefit greatly from attending the event in Warsaw. The economic and scientific growth of the city is driven by the exceptionally good performance of the Polish economy. The country, that has been named the New East's top nation for innovation in a new survey released by Bloomberg, 13 New East countries made the top 50, with Poland leading the region. Last year Poland was also reclassified by the FTSE Russell from Emerging Market to Developed Market. With the upgrade, we are classified as one of the 25 most advanced global economies including the USA, UK and Germany. Poland also classifies among the top European markets for foreign direct investment (FDI), according to a report by Ernst & Young. The gives me confidence to invite you to Poland, to Warsaw - beating heart of business.

We would be delighted if you decide to appoint LOT Polish Airlines – the national carrier, as an Official Carrier for the Event. In 2019 LOT celebrates the 90th anniversary of its establishment. We are one of the most internationally recognizable Polish brands. Our programs dedicated to international events offer discounted fares to all delegates coming to Warsaw, for the event. We connect over 110 destinations all over the world (including many direct long-haul flights) with Central and Eastern Europe, via hubs in Warsaw and Budapest. Your delegates will enjoy safe, quick and comfortable travel to Poland onboard our new fleet.

We would like to welcome the outstanding group of delegates onboard of LOT Polish Airlines aircrafts. I'm also sure that Warsaw unique and magical atmosphere will leave conference delegates with unforgettable memories.

Sincerely yours,



LOT CONVENTIONS



The LOT Conventions programme offers organizers of conventions with a minimum of 100 participants from abroad the opportunity of enjoying the following special privileges:

- Discounts or special rates on flights for participants and the organizers of meetings;
- Problem-free reservations;
- Delegates will receive a unique event code;
- The chance to collect air miles under the Miles and More programme or any other Frequent Flyer programme run by a Star Alliance member.

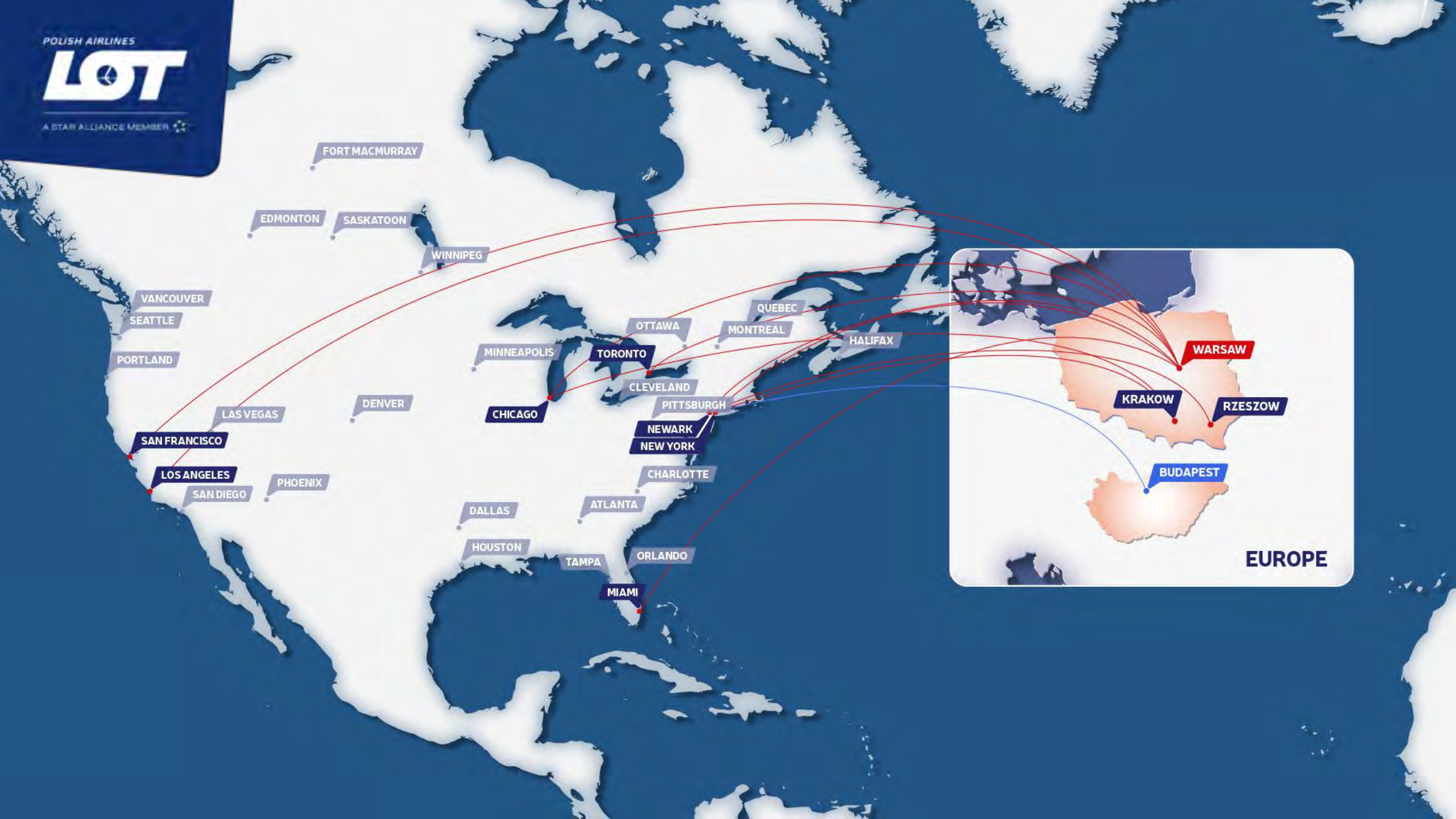


LOT Polish Airlines –
connecting world
with Central Europe.



POLAND





LOT CONVENTIONS

Discounted fares
accessible via

Website: lot.com

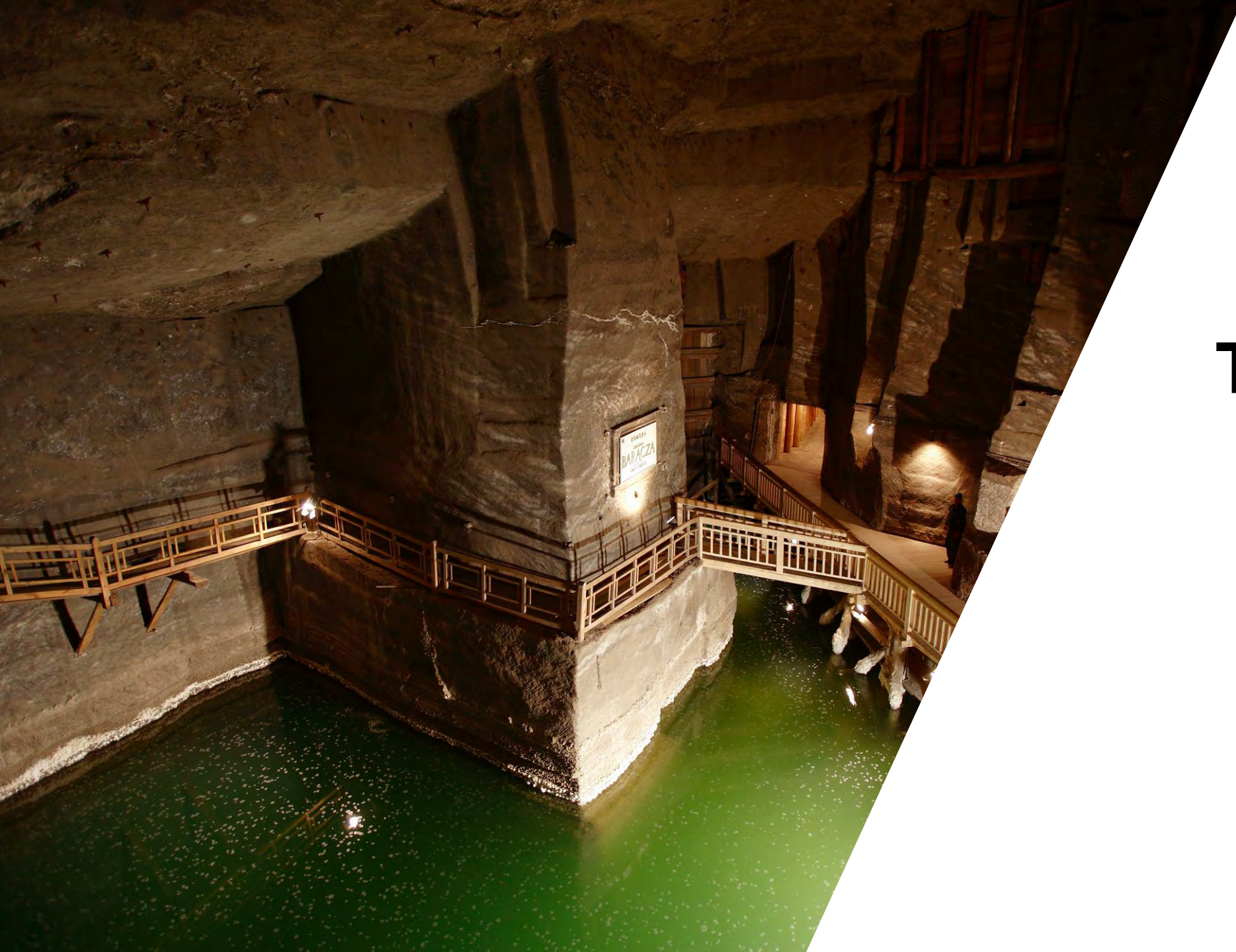


Special booking
link

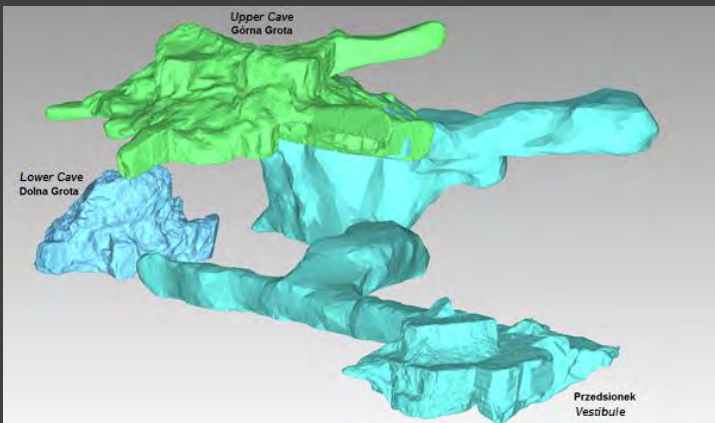


IATA agency
selected by the
organizer

The screenshot displays the LOT website's flight booking interface. At the top, there are navigation tabs: SZUKAJ, POŁĄCZENIA, PASAŻEROWE, USŁUGI DODATKOWE, PŁATNOŚĆ, and POTWIERDZENIE. A language dropdown menu is set to 'polski'. The main heading is 'Wybierz loty i klasę podróży'. The flight search criteria are 'Wylot Londyn (LHR) → Warszawa (WAW)'. A date selector shows the selected date 'Śr 09 25' with a price of '84,18 USD'. Below this, there are three fare class options: 'ECONOMY' (selected), 'PREMIUM ECONOMY' (starting at 226,39 USD), and 'BUSINESS' (starting at 243,45 USD). The 'ECONOMY' section is expanded to show three sub-options: 'SAVER (TYLKO BAGAŻ PODRĘCZNY)' for 84,18 USD (discounted from 89,10 USD), 'STANDARD' (marked as 'NASZA REKOMENDACJA') for 101,78 USD (discounted from 109,10 USD), and 'FLEX' for 139,62 USD (discounted from 152,10 USD). Each option lists included services like baggage, meals, and miles. A 'Koszyk' (Shopping Cart) on the right shows the selected flight and fare, with a total price of 101,78 USD. A red 'Kontynuuj' button is visible at the bottom of the cart.



TECHNICAL TOUR NO 1



WIELICZKA SALT MINE



The “Wieliczka” Salt Mine is the most famous mine in Poland. It owes its uniqueness in the world to its original geological structure and over 700 years of operation and mining tradition. The history of the “Wieliczka” Salt Mine is inextricably linked with the history of Poland; the mine is a monument of material and natural values. One of the natural reasons for protection of the mine is the great geological diversity within and its differences compared to other salt deposits. The Wieliczka deposit is located in the western part of the saliferous formation, at the head of the Carpathian overthrust. Its latitudinal extent is approximately 10km, and the width is in the range of 0.5 to 1.5 km. Deposit formations belong to a substage of Wielician - the middle part of the Badenian stage - and are referred to as the Wieliczka formation. An inventory of the mining object was carried out using the 3D laser scanner. Scans were performed in the angular resolution of 4mgon, which gives a density of measurement points of 3mm/5m. The value of this error is of the order of 5-10 mm for areas not occupied by crystals (sidewalls, footwall, part of the ceiling).



TECHNICAL TOUR 02

Warsaw University of Tehnology

Warsaw University of Technology builds upon the traditions of Polish technical universities that used to function in Warsaw – the Polytechnic Institute founded in 1826 thanks to the efforts of Stanisław Staszic and the School of Hipolit Wawelberg and Stanisław Rotwand established in 1895. Warsaw University of Technology started on its own in 1915 thanks to the efforts of the Association for Scientific Courses and the Citizens' Committee of the City of Warsaw. It is not only the oldest, but also the best technical university in Poland; in the ranking of Polish universities, it has taken the first place in its category for nine years.

TECHNICAL TOUR 03

Geodesic and Cartographic Documentation Center

Geodesic and Cartographic Documentation Center stores, heads and shares databases from Central Geodesic and Cartographic Resource (more information in Polish). Center maintains geoportal.gov.pl and trades datasets from Central Resource.





TECHNICAL TOUR 04

Planetarium & Centre for Astronomy, Nicolaus Copernicus University.

Toruń is the city connected with the great astronomer Nicholas Copernicus who was born here and spent several years of his life here. Toruń Planetarium gives the opportunity to admire the same sky which fascinated Copernicus. The Torun Centre for Astronomy is a part of the Faculty of Physics, Astronomy and Informatics of the Nicholas Copernicus University. It is located at Piwnice, 15km north of Torun in Poland. With the use of a huge radiotelescope the research work looks completely different compared to centuries ago.

TECHNICAL TOUR 05

Bełchatów –open pit coal mine

The Bełchatów coal mine is a large mine in the centre of Poland in Bełchatów, Łódź Voivodeship, 150 km west of the capital, Warsaw. Bełchatów represents one of the largest coal reserve in Poland having estimated reserves of 1,930 million tonnes of coal. The annual coal production is around 50 million tonnes.





TECHNICAL TOUR 06

Bug

The Bug river - has seen very few changes since the middle ages, when it was a significant part of the amber road. It has preserved its natural and untamed character. The river has a relatively rapid current and tends to get capricious. It creates numerous curves, meanders and has picturesque islands. The river valley is relatively narrow. The bottom of the valley is filled with green meadows, and the high slopes add to its charm.

TECHNICAL TOUR 07

Narew

The Narew is one of the largest of the right bank tributaries of the Vistula. It is typically lowland river, of very small drop and gentle current. The construction of a water step in Dębe caused a build up of the lower section of the river, near its confluence with Bug. That is how Zalew Zegrzyński was created. In its Mazovian flow the Narew traverses regions famous for their vivid Kurpie folklore.





TOURS & SIGHTSEEINGS



TOUR 01

Warsaw City Tour

The tour includes all major touristic attractions in Warsaw, we'll take you to Old Town with Royal Castle, Old Market Square, Presidential Palace and University of Warsaw, Holy Cross Church with Chopin's heart. More highlights of Warsaw tour include New Town with Monument of Warsaw Uprising, Jewish Ghetto, Tomb of Unknown Soldiers, Palace of Culture and Science.

TOUR 02

Warsaw Jewish Heritage Tour

For a very long time, from 19th century until the beginning of World War II, Warsaw used to be considered as a capital of Jewish culture in Europe. We offer you special version of city tour dedicated to sites related to Jewish history in Warsaw. During our tour you will see old Jewish district, Nozyk synagogue and Kirkut – old Jewish cemetery. You will visit Jewish Ghetto – center of Jewish culture before World War II, where you will see remains of former vibrant city area like Zamenhoff, Mila and Nalewki streets. You will not miss such important sites like Umschlag Platz and Monument to Ghetto Heroes.





TOUR 03

Warsaw World War II Tour

On 1 August 1944 the underground Home Army launched an uprising in Warsaw against the occupying Germans. The uprising lasted over two months and led to complete destruction of the city as well as the loss of tens of thousands of lives. As you can imagine there are lots of places in the city today strongly related to those events from terrible war times. During this tour you will visit: monument to the Little Insurgent, Nike Monument, Krasinski Square with Monument to the 1944 Warsaw Uprising, Pasty building – famous for intensive fights, Pawiak Prison, Jewish Ghetto, Monument to the Heroes of the Ghetto, Warsaw Uprising Museum.

TOUR 04

Warsaw Communism Tour

This tour allows you to explore Warsaw much deeper and visit the best preserved Communist sites in Warsaw. You will visit the Constitution Square and walk along the main streets like Krucza, Zurawia and Hoza in the quarter of the former Central Offices. Here we will admire the Grand Hotel and the Ministry of Agriculture – a building of an impressive architectural value, the Party's House and the first modern shopping center from the 50's. Moreover, we will visit the symbol of communist era in Poland: the Palace of Culture and Science. The lift can take you as high as the 30th floor (out of the total 42) to the viewing terrace, situated at 114 meters. From the top extends a panoramic view of the city.





TOUR 05

Łazienki Królewskie

The palace and park complex in the Warsaw Łazienki is one of the most beautiful historical establishments of a kind in the capital. Łazienki Królewskie in Warsaw is a former residence of the king Stanisław August Poniatowski. Nearly an eighty-hectare park with old tree-stand, numerous water basins and the highest art buildings, expresses the aesthetic preferences of the last king of Poland.

At presents, Łazienki Królewskie is a vast park with picturesque alleys, canals, small ponds, decorated with various outstanding sculptures.

TOUR 06

Wilanów

Situated on the southern edge of Warsaw, surrounded by the greenery of the historic park in Wilanow palace is one of the biggest tourist attractions. Within the 45-hectare park you will see the gardens in different styles: a two-level Baroque garden, neo-Renaissance rose garden, English garden landscape and English-Chinese landscape park. It is also worth visiting the museum inside the palace, to see the old chamber of King Jan III Sobieski and enjoy the gallery of Polish painting.





TOUR 07

Żelazowa Wola

Located at a distance of about 50 km from Warsaw Żelazowa Wola - a beautiful park and manor, the birthplace of composer Frederick Chopin - is visited by crowds of visitors from Poland and abroad. It is a special place, which still resounds the music of Chopin - a place where he came into the world, which he often visited, where he created and rested.

TOUR 08

The Kampinoski Forest

A natural apparatus for treating the air of the capital - is spread out only a few kilometers from the outskirts of Warsaw. The forest is one of only two national parks in the world neighbouring a metropolis. And the only one in Europe, the other one is in Nigeria.





TOUR 09

Museum of narrow - gauge railways in Sochaczew

The Bug river - has seen very few changes since the middle In the museum we can see the authentic historic rolling stock: locomotives, wagons and other railway equipment. Among the most interesting and valuable exhibits is a wagon, the so-called "Bierut Salon Wagon", and the only one in Europe fully preserved armored train.

TOUR 10

Motorisation and Technology Museum in Otrębusy

The museum was established in 1995 and is a private venture of automotive enthusiasts. At this time, it has more than 300 old cars, motorbikes, trucks, and even armored vehicles. It is the largest museum of its kind in Poland and one of the largest in Europe. The collections include the cars once driven by such stars as - Marilyn Monroe or Elvis Presley.



FOUNDATION DINNER

CENTRUM PRASKIE
KONESER

With its beautiful architecture, and surrounded by the unique atmosphere of Warsaw's historic Praga district, Koneser is the beating heart of the capital's events world. The building named Laboratory offers 2400 m2 of event space, which is suitable for the cultural evening. The Polish Vodka Museum with unique exhibits and interactive galleries is also situated in one of the historical buildings of the „old” Koneser factory.



FOUNDATION DINNER

SŁUŻEWIEC
RACECOURSE

Built in 1939, the Służewiec Racecourse in Warsaw is a facility unique on a global scale as one of the oldest racetracks in Europe still holding horseracing events.

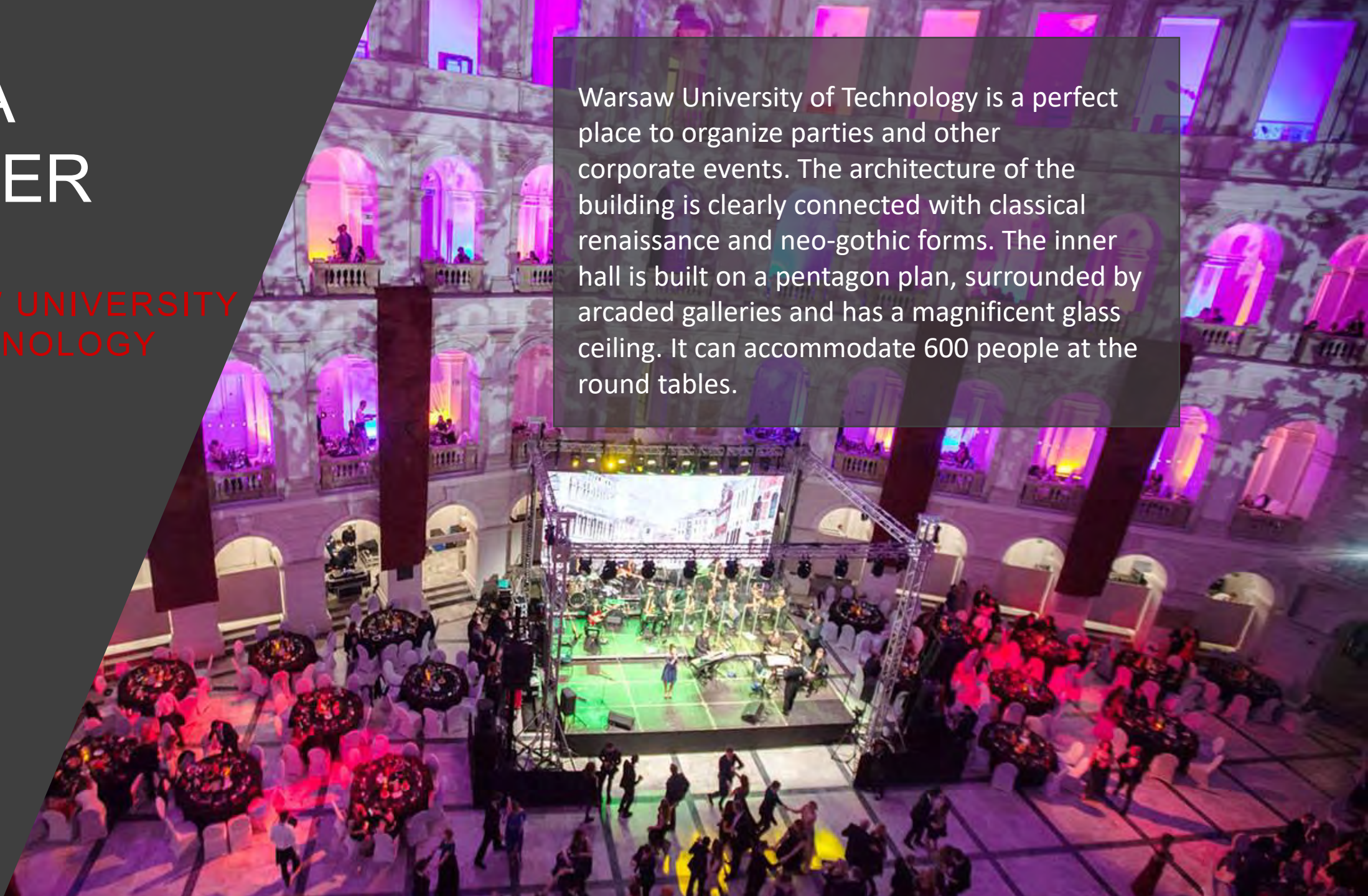
The main hall offers 1800 m² of event space and it is an excellent venue for cultural evening among green areas of Warsaw.



GALA DINNER

WARSAW UNIVERSITY
OF TECHNOLOGY
AULA

Warsaw University of Technology is a perfect place to organize parties and other corporate events. The architecture of the building is clearly connected with classical renaissance and neo-gothic forms. The inner hall is built on a pentagon plan, surrounded by arcaded galleries and has a magnificent glass ceiling. It can accommodate 600 people at the round tables.



GALA DINNER

ROYAL CASTLE
ARKADY
KUBICKIEGO

The Royal Castle in Warsaw is a venue for many types of events and meetings: state and diplomatic ceremonies, academic conferences, international congresses, symposia, lectures, concerts, jubilee gala events, promotions, banquets, etc.

The castle's magnificent interiors will provide an impressive and elegant setting for any event you wish to plan. Arkady Kubickiego Hall can accommodate 800 people at the round tables.



HOTELS IN WARSAW

over
510
tourist accommodation
establishments

over
39,500
bed
places

68€
average daily rate
of a double room

92
total number of hotel
establishments

72.4%
occupancy in hotel
establishments in 2017

26,906
number of bed places
in classified hotels

HOTELS IN WARSAW





KEY MICE AND CULTURAL VENUES

- 01 Palace of Culture and Science – Warsaw Congress Centre
- 02 "PGE Narodowy" Stadium
- 03 POLIN Museum of the History of Polish Jews
- 04 National Museum in Warsaw
- 05 Royal Castle in Warsaw
- 06 Warsaw Rising Museum
- 07 Fryderyk Chopin Museum
- 08 Łazienki Królewskie Museum
- 09 Museum of Warsaw
- 10 Copernicus Conference Centre – Copernicus Science Centre
- 11 Museum of Modern Art
- 12 Polish Vodka Museum
- 13 EXPO XXI Warszawa
- 14 Legia Warszawa Stadium
- 15 Służewiec Racecourse
- 16 Vistula Group of Universities
- 17 Centrum Praskie Koneser
- 18 Global EXPO

CONFERENCE HOTELS

- 5* HOTELS**
- 01 Sofitel Warsaw Victoria
- 02 Hotel Marriott
- 03 Sheraton Warsaw Hotel
- 04 The Westin Warsaw
- 05 InterContinental Warszawa
- 06 Hotel Bristol Warsaw
- 07 Hotel Rialto (temporarily under renovation)
- 08 Raffles Europejski Warsaw

- 4* HOTELS**
- 09 DoubleTree by Hilton Hotel & Conference Center
- 10 Hilton Warsaw Hotel & Convention Centre
- 11 Novotel Warszawa Airport
- 12 Novotel Warszawa Centrum
- 13 Mercure Warszawa Centrum
- 14 Courtyard by Marriott Warsaw Airport
- 15 Leonardo Royal Hotel Warsaw
- 16 Golden Tulip Warsaw Centre
- 17 Mercure Warszawa Grand

- 3* HOTELS**
- 18 Best Western Hotel Felix
- 19 Best Western Hotel Portos
- 20 Ibis Warszawa Old Town
- 21 Ibis Warszawa Reduta
- 22 Ibis Styles Warszawa Centrum
- 23 Sound Garden Hotel

Symposium Cracoviense DMC

SYMPOSIUM CRACOVIENSE was established in 1998. Our ambitious plans to support the organization of various scientific, social, integrating and educating events on the national and international scale will certainly help us to inscribe our name in the contemporary book of scientific, cultural and sporting life in Poland. We specialize in organizing congresses, conferences, symposia, seminars, business meetings, exhibitions and trainings. Our experience, know-how and logistic procedures guarantee success. Trust us and you will work with a team of experienced members, you will get professional equipment, interesting and stimulating arrangement of venues and other useful services like: servicing your journey, booking accommodation in Poland, renting a car, coaches, guides and couriers.

Support for the congress:

- Free mobile application
- Free staff at the welcome desk at the airport



Contact person:

Anna Jedrocha, CEO

Phone +48 12 422 76 00 Mobile +48 602 459 178

E-mail: anna.jedrocha@symposium.pl

www.symposium.pl

Address: PL 31-123 Kraków, ul. Krupnicza 3



Expertis credite





See You in **WARSAW**