

FIG-WB Partnership on Land Governance in Support of the Global Agenda

Prof. Stig Enemark, Denmark
 FIG President 2007 - 2010
Mr. Teo Chee Hai, Malaysia
 FIG President Elect 2011 - 2014

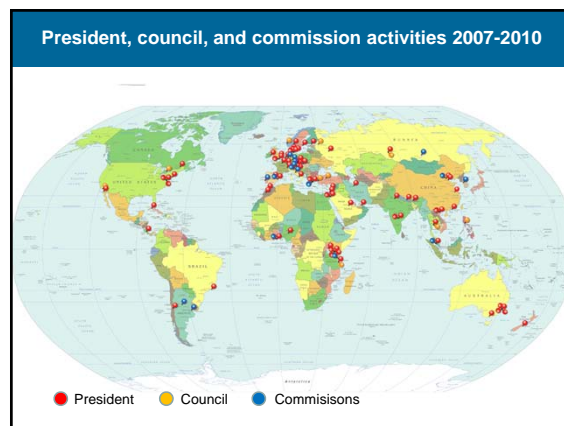
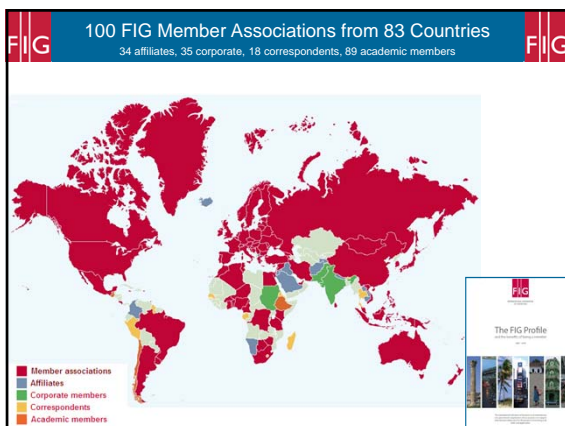
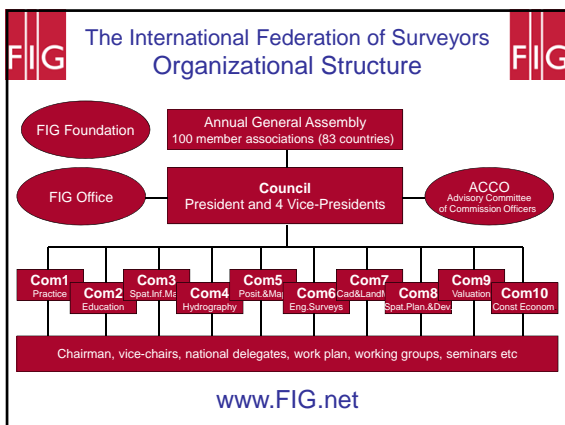
WORLD BANK LAND GROUP, WASHINGTON, 13 SEPTEMBER 2010

The Message



- FIG wants to continue and further develop the partnership with the World Bank as established by the MoU in February 2007.
- This relates to the global agenda such as the MDGs and the new challenges such as climate change, disaster management, urban growth, etc.
- This calls for increased global partnership on Land Governance

FIG is prepared to invest in such collaborated efforts.



The FIG Agenda

Flying High

- Global partnership with the UN-agencies incl. the World Bank in support of the global agenda such as the MDGs

Keeping the feet on the ground

- Professional and institutional development at regional, national, and local level in support of the needs of our member associations and individual surveyors.



The Role of FIG

- **Professional Development**
 - Global forum for professional discussions and interactions through conferences, symposia, commission working groups,
- **Institutional Development**
 - Capacity building through Institutional support for educational and professional and institutional development at national level
- **Global Development**
 - Cooperation with the UN agencies, FAO, UN-HABITAT and World Bank, and sister organisations through Joint Board of Geospatial Information Societies.
- **Information and Communication**
 - Website, annual review, publications
- **FIG Office**
 - Administration, finances, services

FIG publications 2007– 2010

available online – FIG.net					

It is all about:

People, human rights, engagement and dignity

Politics, land policies and good governance

Places, shelter, land rights, and natural resources

and Power, decentralisation and empowerment






FIG Policies - the big swing

- **From Measurement**

Surveyors will still be high level experts within measurement science, but due to technology development the role is changing into managing the measurements
- **To Management**

Surveyors will increasingly contribute to building sustainable societies as experts in managing land and properties

The Land Professionals

Current FIG policies

Do Surveyors have a role to play in the global agenda?

Yes !

Simply, no development will take place without having a spatial dimension

And no development will happen without the footprint of the surveyor

The Global Agenda The Millennium Development Goals

Goal 1: Eradicate extreme poverty and hunger
 Goal 2: Achieve universal primary education
 Goal 3: Promote gender equality and empower women
 Goal 4: Reduce child mortality
 Goal 5: Improve maternal health
 Goal 6: Combat HIV/AIDS, malaria and other diseases
 Goal 7: Ensure environmental sustainability

Goal 8: Develop a Global Partnership for Development

The framework includes 18 targets and
48 indicators enabling the ongoing
monitoring of annual progress

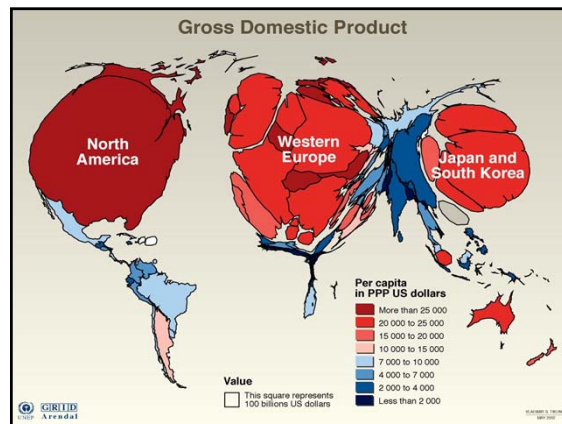


FIG Global Partnership with

- **FAO**, projects on capacity building, good governance, land economics, etc...
- **UN-HABITAT**, partner in the GLTN network, projects on informal settlement (STDM), informal development, gendered land tools, etc....
- **World Bank**, joint conference on Land Governance in support of the MDGs , joint projects and publications, etc....

Partnership with the World Bank

MoU signed May 2007

Strong partnership on Land Governance in support of the MDGs

WB participation and contribution to the FIG Annual Working Weeks Hong Kong, 2007, Stockholm, 2008, Eilat, 2009, and the FIG Congress in Sydney, 2010; And the fig regional Conferences in Costa Rica, 2007 and Hanoi 2009.

Joint FIG-WB Conference March 2009 on Land Governance in support of the MDGs. More than 200 invited experts from throughout the world. Joint publications and declaration - **a major achievement**

Partnership on the global agenda ahead – the contribution of Land Governance to the mega challenges of climate change, disasters, rapid urbanisation, etc.

Land Governance in Support of the MDGs

Six Themes:

1. Land Governance for the 21st Century
2. Sustainable Systems for Land Administration and Management
3. Securing Social Tenure for the Poorest
4. Making Land Markets Work for All
5. Improving Access to Land and Shelter
6. Land Governance for Rapid Urbanisation

Taking the Land Policy Agenda Forward

Gold sponsors


Silver sponsors

Key areas for the FIG-WB partnership ahead

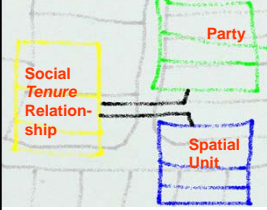

- **Limitations of Cadastral systems – the STDM**
 - Closing the technical gap
- **Land Governance facing the new challenges:**
 - Climate Change, Disaster Risk Management, Rapid Urbanisation
- **Strengthening regional capacity**
 - Africa, Asia, Latin America....
- **Joint publication: “Land Information 2025” ?**
 - Survey accuracy, fit for purpose
- **Mutual participation in conferences**
 - FIG working weeks, regional conferences, WB annual land conferences,
- **Joint FIG-WB conference/thematic workshops**

...Limitations of Formal Cadastral Systems

- More than 70 per cent of the land in many developing countries are outside the formal systems of land registration and administration
- This relates especially to informal settlements and areas governed by customary tenure
- Traditional cadastral systems do not provide for security of tenure in these areas.



The Social Tenure Domain Model: Closing the Gap





Modeling the relation between Parties – Spatial unit – Social Tenure

Parties ("who"): Not only a (legal) person – but a range of subjects such as person, couple, groups of people, unidentified groups, authority, etc.

Spatial Unit ("where"): Not only an identified (measured) parcel – but a range of objects such as land parcels, buildings, etc and identified in various ways – such as one point, street axes, photos, etc.

Social tenure ("what"): Not only ownership and formal legal rights – but also range of informal, indigenous and customary rights as well as financial issues such as group loans and micro credit.




Facing the new challenges

- Climate change
- Food shortage
- Energy scarcity
- Urban growth
- Environmental degradation
- Natural disasters
- Global financial crisis

All these challenges relate to governance and management of land

Good Land Governance is fundamental for achieving the MDGs

Climate change – disaster management



Time, 2009

A Mojeed, AFP, Getty Images (2010)

The most important environmental concern now is climate change. The authoritative Stern Report on the economics of climate change concludes that it will 'affect the basic elements of life for people around the world – access to water, food production, health and the environment'.

(Planning Sustainable Cities: Global Report on Human Settlement 2009 (UN-Habitat))

Food shortage – large scale agri-business

More than 1.02 billion hungry people






One sixth of humanity undernourished (FAO, 2009)



Rapid Urbanisation

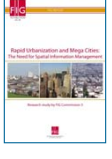
	1950	1975	2007	2025	2050
World Urban Population (million)	737	1,518	3,294	4,584	6,398
Percentage	29.1%	37.3%	49.4%	57.2%	69.6%
More Developed Region (million)	427	702	916	995	1,071
Less Developed Region (million)	310	817	2,382	3,590	5,327

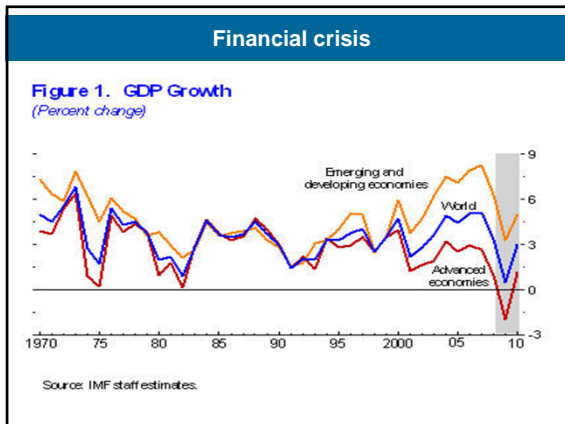
Source: UN, 2008

Close to 1 billion people, or 32 per cent of the world's current urban population, live in slums in inequitable and life-threatening conditions, and are directly affected by both environmental disasters and social crises, whose frequency and impacts have increased significantly during the last few decades.

(UN-Habitat, 2009)

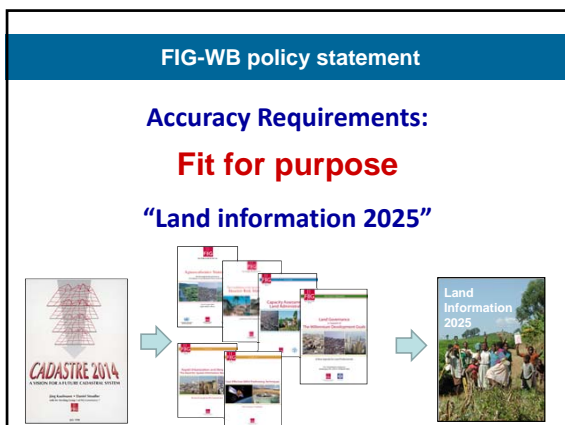




Survey Accuracy Requirements

Application	Accuracy	Technique
Geodetic Reference Frame		
Monitoring (natural and man-made features)	Millimetre	Post processed geodetic GNSS based on CORS
Engineering and Construction (infrastructure: roads, rail, bridges etc)	Centimetre	Precise Positioning (post-processed or real-time, including machine guidance)
Large Scale Spatial Data Capture (non-cadastral)		
Mining		
Precision Agriculture		
Urban and high value cadastre	Decimetre	Differential GNSS and/or Cost Effective GNSS Surveying
Rural and low value cadastre		
Asset Management and GIS		
Emergency Response		
Safety-of-Life Navigation		
General Navigation	Metre	Single Point Positioning

Global Positioning Infrastructure and Sustainable Land Administration Systems by Matt Higgins
World Bank Annual Conference on Land Policy and Administration, Washington, DC, April 26 and 27, 2010



Collaborative projects

Preamble

Land still has potential and the capacity to provide opportunity particularly within efforts to reduce hunger, provide shelter and reduce poverty.

Proposal

The Bank and FIG can further strengthen the collaboration and partnership over the next four years and may include areas such as -

- Social Tenure Domain Model (and the complexity within the framework of Tenure Security).
- Good land governance - the role of land governance in facing the new challenges such as climate change, disasters, rapid urbanisation, poverty alleviation, etc.
- Appropriate (or fit-for-purpose) Land Administration Framework

- ### Conference collaborations
- **Bank Land Thematic Group Annual Conferences**
FIG representative may participate to present and discuss initiatives and projects.
 - **2011 FIG Working Week, May 18 - 22, 2011, Marrakech, Morocco**
The Bank may participate to present and discuss current land administration projects and related initiatives in the region, and encourage participation for Bank-funded staff in the region.
 - **2012 FIG Working Week, May 6 - 11, 2012, Rome, Italy**
Bank may participate with keynote and lead speakers, and encourage participation from Bank-funded project staff in the region.
 - **FIG Regional Conference, November 2012, South America (proposed)**
The Bank may participate to present and discuss current land administration projects and related initiatives in the region, conduct a joint workshop and training in Good Land Governance (to be determined and agreed) and encourage participation for Bank-funded staff in the region.
 - **A Joint Bank/FIG Conference, 2013, Washington DC, United States**
A joint conference to present the outcomes of collaborative efforts of the Bank and FIG with an added objective to mainstream the Land Sector (governance of the land, natural and built environment) into national development and national economy.
 - **2013 FIG Working Week, May 2013, Abuja, Nigeria**
The Bank may participate to present and discuss current land administration projects and related initiatives in the region, and encourage participation for Bank-funded staff in the region.
 - **XXV FIG Congress, May 11 - 16, 2014, Kuala Lumpur, Malaysia**
Bank may participate with keynote and lead speakers, discuss current projects and initiatives in the Asian region, conduct a joint thematic session workshop to be determined and agreed and encourage participation from Bank-funded project staff.